

# BLUE STAR

## Power Systems Inc.

### Diesel Product Line

208-600 Volt

CD500-01

60 Hz / 1800 RPM

500 kWe / 460 kWe

Standby / Prime

### Ratings

	208V	240V	480V	600V
<b>Phase</b>	3	3	3	3
<b>PF</b>	0.8	0.8	0.8	0.8
<b>Hz</b>	60	60	60	60
<b>Generator Model</b>	572RSL4029	572RSL4029	572RSL4027	572RSS4270
<b>Connection</b>	12 LEAD WYE	12 LEAD DELTA	12 LEAD WYE	4 LEAD WYE
<b>Standby</b>				
<b>kWe</b>	500	500	500	500
<b>AMPS</b>	1737	1505	753	602
<b>Temp Rise</b>	130°C / 27°C	130°C / 27°C	130°C / 27°C	130°C / 27°C
<b>Prime</b>				
<b>kWe</b>	460	460	460	460
<b>AMPS</b>	1598	1385	692	554
<b>Temp Rise</b>	105°C / 40°C	105°C / 40°C	105°C / 40°C	105°C / 40°C

### Standard Equipment

#### Engine

- ▶ Radiator Cooled Unit Mounted (40°C)
- ▶ Blower Fan & Fan Drive
- ▶ Starter & Alternator
- ▶ Oil Pump & Filter
- ▶ Oil Drain Extension w/ Valve
- ▶ Governor - Electronic Isochronous
- ▶ 24V Battery System & Cables
- ▶ SAE Flywheel Housing
- ▶ Air Cleaner (Dry Single Stage)
- ▶ Flexible Fuel Connectors
- ▶ EPA Certified - Tier 2

#### Generator

- ▶ Brushless Single Bearing
- ▶ Automatic Voltage Regulator
- ▶ ± .25% Voltage Regulation
- ▶ 4 Pole, Rotating Field
- ▶ 130°C Standby Temperature Rise
- ▶ 105°C Prime Temperature Rise
- ▶ 100% of Rated Load - One Step
- ▶ 5% Maximum Harmonic Content
- ▶ NEMA MG 1, IEEE and ANSI standards compliance for temperature rise

#### Additional

- ▶ UL 2200 Listed
- ▶ cUL Listed
- ▶ Microprocessor Based Digital Control
- ▶ Base - Structural Steel
- ▶ Main Line Circuit Breaker Mounted & Wired
- ▶ Critical Grade Silencer Mounted
- ▶ Battery Charger 24V 5 Amp
- ▶ Jacket Water Heater -20°F 4000W 240V w/Isolation Valves
- ▶ Vibration Isolation Mounts
- ▶ Radiator Duct Flange (OPU Only)
- ▶ Single Source Supplier
- ▶ 2YR / 2000HR Standby Warranty
- ▶ 1YR / 1500HR Prime Warranty
- ▶ Standard Colors - White / Tan / Gray



# Diesel Product Line

500 kWe / 460 kWe



## Application Data

### Engine

Manufacturer:	Cummins	Displacement - Cu. In. (lit):	912 (15.0)
Model:	QSX15-G9 NR2	Bore - in. (cm) x Stroke - in. (cm):	5.39 (13.7) x 6.65 (16.9)
Type:	4-Cycle	Compression Ratio:	17.0:1
Aspiration:	Turbo Charged, CAC	Rated RPM:	1800
Cylinder Arrangement:	6 Cylinder Inline	Max HP Stby (kWm):	755 (563)

### Exhaust System

	Standby	Prime
Gas Temp. (Stack): °F (°C)	909 (488)	875 (468)
Gas Volume at Stack Temp: CFM (m³/min)	3,845 (109)	3,200 (90.6)
Maximum Allowable Exhaust Restriction: in. H2O (kPa)	40.8 (10.2)	40.8 (10.2)

### Cooling System

Ambient Capacity of Radiator: °F (°C)	122 (50.0)	122 (50.0)
Maximum Allowable Static Pressure on Rad. Exhaust: in. H2O (kPa)	0.5 (0.12)	0.5 (0.12)
Water Pump Flow Rate: Gpm (lit/min)	105 (397)	105 (397)
Heat Rejection to Coolant: BTUM (kW)	9,230 (162)	7,830 (137)
Heat Rejection to CAC: BTUM (kW)	9,070 (159)	7,300 (128)
Heat Radiated to Ambient: BTUM (kW)	4,553 (79.7)	4,189 (73.3)

### Air Requirements

Aspirating: CFM (m³/min)	1,510 (42.7)	1,380 (39.1)
Air Flow Required for Rad. Cooled Unit: CFM (m³/min)	25,000 (708)	25,000 (708)
Air Flow Required for Heat Exchanger/Rem. Rad. CFM (m³/min)	Consult Factory For Remote Cooled Applications	

### Fuel Consumption

At 100% of Power Rating: gal/hr (lit/hr)	35.9 (136)	31.1 (118)
At 75% of Power Rating: gal/hr (lit/hr)	26.2 (99.2)	23.9 (90.5)
At 50% of Power Rating: gal/hr (lit/hr)	18.2 (68.9)	17.2 (65.3)

### Fluids Capacity

Total Oil System: gal (lit)	24.0 (90.8)	24.0 (90.8)
Engine Jacket Water Capacity: gal (lit)	6.3 (24.0)	6.3 (24.0)
System Coolant Capacity: gal (lit)	15.3 (57.9)	15.3 (57.9)

#### Deration Factors

Rated power available up to 500 ft (152 m) at ambient temperatures to 104°F standby and prime.  
Consult factory for site conditions above these parameters.

## DGC-2020 Control Panel

### Standard Features

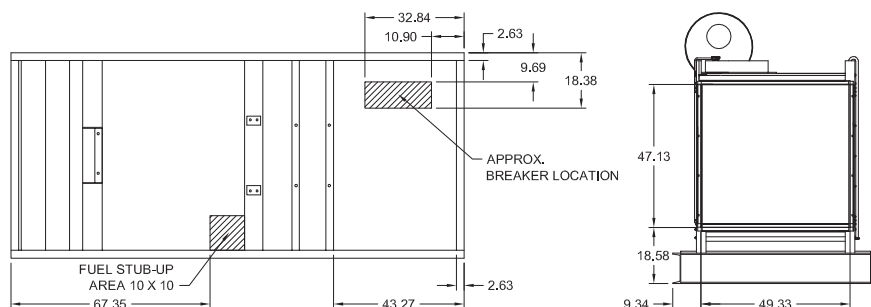
- ▶ Digital Metering
- ▶ Engine Parameters
- ▶ Generator Protection Functions
- ▶ Engine Protection
- ▶ CAN Bus ECU Communications
- ▶ Windows-Based Software
- ▶ Multilingual Capability
- ▶ Remote Communications to RDP-110 Remote Annunciator
- ▶ 16 Programmable Contact Inputs
- ▶ Up to 15 Contact Outputs (7 standard)
- ▶ UL Recognized, CSA Certified, CE Approved
- ▶ Event Recording
- ▶ IP 54 Front Panel Rating with Integrated Gasket
- ▶ NFPA 110 Level 1 Compatible



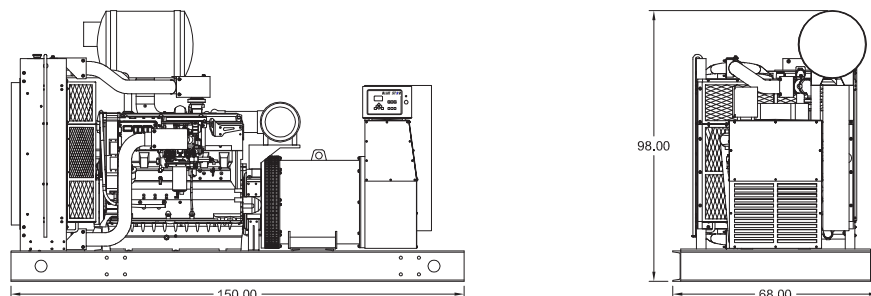
## Weights / Dimensions / Sound Data

	L x W x H	Weight lbs
<b>OPU</b>	150 x 68 x 98 in	8600
<b>LEVEL 1</b>	150 x 68 x 115 in	9500
<b>LEVEL 2</b>	150 x 68 x 126 in	10,100
<b>LEVEL 3</b>	205 x 68 x 114 in	10,700

Height measured from bottom of base to exhaust stack.



	No Load	Full Load
<b>OPU</b>	88 dBA	92 dBA
<b>Level 1</b>	84 dBA	88 dBA
<b>Level 2</b>	83 dBA	87 dBA
<b>Level 3</b>	72 dBA	75 dBA



Drawings based on standard open power 480 volt standby generator. Lengths may vary with other voltages. Subject to change without notice. Sound data as measured at 23 feet (7 meters) in accordance with ISO 8528-10 at standby rating.

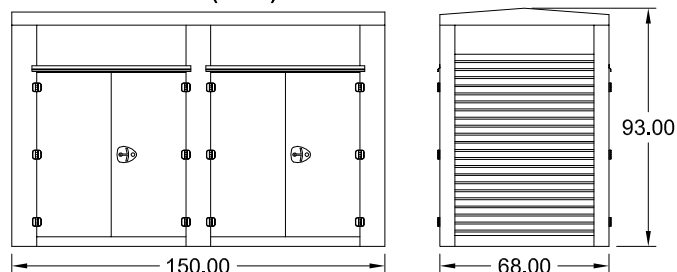
# Diesel Product Line

500 kWe / 460 kWe

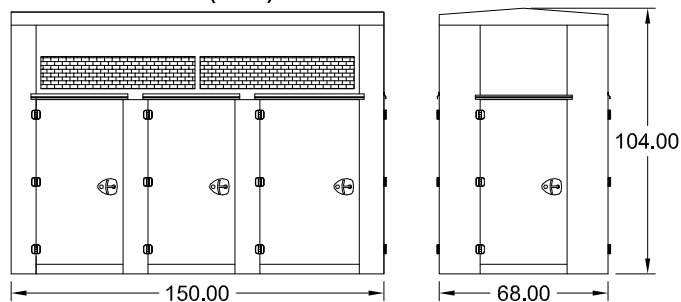


## Optional Enclosures and Fuel Tanks

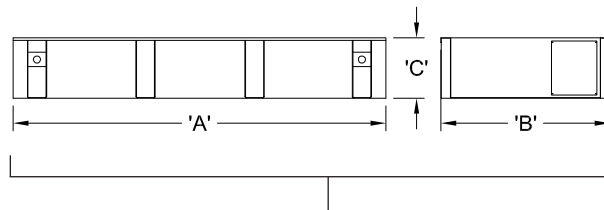
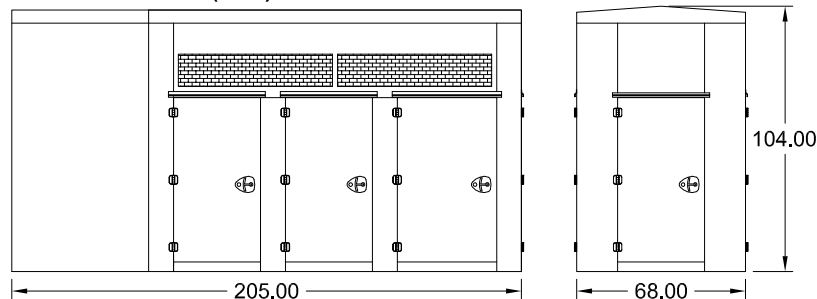
### Level 1 Enclosure (WPE)



### Level 2 Enclosure (WPF)



### Level 3 Enclosure (SAE)



\*Level 1 enclosures are 100 MPH Wind Rated as standard (up to 150 MPH available).

\*\*Level 2 & 3 enclosures are 150 MPH Wind Rated as standard.

\*\*\*Enclosure height does not include unit base or exhaust stack.

### Double Wall UL 142 Listed Fuel Tanks

	24 Hour (875 Gallon)			48 Hour (1750 Gallon)			72 Hour (2625 Gallon)		
	A	B	C	A	B	C	A	B	C
<b>OPU</b>	150.00	68.00	30.00	230.00	68.00	36.00	336.00	68.00	36.00
<b>Level 1</b>	150.00	68.00	30.00	230.00	68.00	36.00	336.00	68.00	36.00
<b>Level 2</b>	150.00	68.00	30.00	230.00	68.00	36.00	336.00	68.00	36.00
<b>Level 3</b>	205.00	68.00	22.00	230.00	68.00	36.00	336.00	68.00	36.00

\*All specification sheet dimensions are represented in inches.

\*\*All enclosures and fuel tanks are based on the standard standby unit configuration. Any deviation can change dimensions.

\*\*\*Level 1 enclosure not UL listed.

Materials and specifications subject to change without notice.

Distributed By:



**Blue Star Power Systems, Inc.**

52146 Ember Rd, Lake Crystal, MN 56055

Phone + 1 507 726 2508

[www.bluestarps.com](http://www.bluestarps.com)