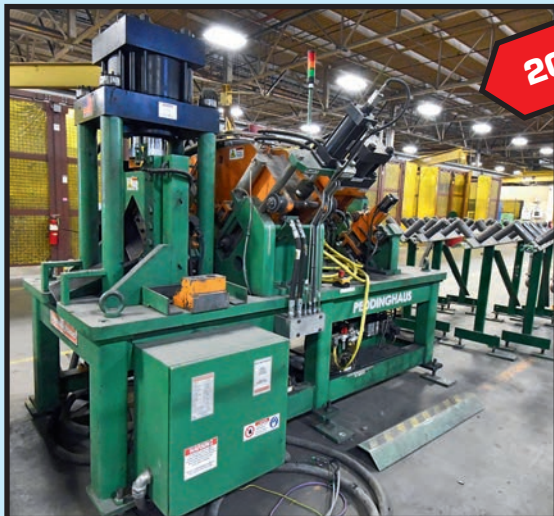




AUCTION

(12) LOCATIONS IN TEXAS, OKLAHOMA, LOUISIANA & ILLINOIS

Featuring: Late Model Fabricating Equipment new as 2019; Machine Tools incl. CNC Lathes & VMCs, Grinders, & More; Trucks; Manlift; Utility Farm Tractor; Hyd. Telescoping Crane; Mobile Gantry Crane; Forklifts; All Types of Shop Supplies; More



2016

PEDDINGHAUS
ANGLEMASTER
CNC ANGLE
PROCESSING LINE



AMADA 78" X 78"
LARGE CAPACITY
HORIZONTAL
BANDSAW



**AS NEW AS
2019**

**35
AVAILABLE**

VIEW OF LINCOLN IDEALARC DC400 MIG WELDERS

**WEDNESDAY
AUGUST 10
10:00 A.M.
LIVE ONLINE
WEBCAST
(NO ONSITE
BIDDING)**



TOYODA MDL. BM-1600 VERTICAL MACHINING CENTER



PETERBILT MDL. 386 SLEEPER CAB TRUCK TRACTOR

FOR BIDDING AT
THIS AUCTION.
Go to
www.pmi-auction.com
and click on
BidSpotter
or **proxibid**
on our calendar
page for this
auction sale.

**18% BUYER'S PREMIUM
WILL APPLY**



MESSER PLASMA HIGH DEFINITION 20'W. CUTTING GANTRY

Sale Conducted By:

PLANT & MACHINERY INC.

AUCTIONEERS • APPRAISERS • LIQUIDATORS • REAL ESTATE

Ron Moore, TX Lic. #7314 • LA Lic. #851

HOUSTON • DALLAS • ST. LOUIS

Headquarters:
1304 Langham Creek Drive, Suite 454
Houston, Texas 77084

PHONE: (713) 691-4401

FAX: (713) 672-7905

E-MAIL: pmi@pmi-auction.com
WEBSITE: www.pmi-auction.com



2016

PEDDINGHAUS ANGLEMASTER CNC ANGLE PROCESSING LINE

CNC ANGLE PROCESSING LINE

PEDDINGHAUS "ANGLEMASTER" MDL. AFPS643QCNC, new 2016, 75 T., punch cap., 230 shear cap., 1-1/2" x 1-1/2" x 1/8" min. angle size, 6" x 6" x 5/8" max. angle size, 2" x 1/4" - 6" x 5/8" plate size, X-axis 150 pm, S/N A002157, Siemens CNC control, (4) V-roller material infeed stations, sick light beam safety device, **NOTE: This machine was moved from another facility in 2020 and has remained unassembled since.**

TWIN RAM HYDRAULIC STRAIGHTENING PRESSES

CUSTOM 200 T. CAP., 120"L. x 33-1/2"W. bed, assorted straightening blocks, (2) 100 T. Enerpac hyd. ram w/lateral adjustment, Enerpac electric powered hyd. pump, approx. 22" daylight, approx. 12" ram stroke.

CUSTOM 200 T. CAP., 15'L. bed, approx. 40" daylight, (2) Powerteam 100 T. hyd. rams, w/linear traverse on roller carriage, Powerteam electric powered hyd. pump, assorted straightening blocks, heavy fabricated frame, S/N N.A.

MOVING GANTRY SUB ARC ROTARY WELDING SYSTEM

KENTEX 2 HEAD TWIN WIRE, rolling gantry, approx. 108" btwn. up rights, (2) adjustable ht. rolling weld carriages, (4) Lincoln MAX SA10 digital wire feed controls, Weld Engineering flux heater and vacuum system, rotating head stock and tail stock system, approx. 25' linear gantry travels.



KENTEX MOVING GANTRY SUB ARC ROTARY WELDING SYSTEM

LOCATION #1:

Surplus to the Ongoing Operations of

HUDSON PRODUCTS CORP.

5615 S. 129TH E. AVENUE, TULSA, OKLAHOMA 74134

INSPECTION: Monday & Tuesday, August 8 & 9, 9:00 A.M. to 4:00 P.M. Each Day.



ANGLEMASTER
CNC CONTROL



(1 OF 2) 200 T.
STRAIGHTENING
PRESSES

SUB ARC SIDE BEAM ROTARY WELDING STATIONS

PRESTON EASTON MDL. VSC1500-30, new 2000, approx. 18' distance btwn. positioning heads, rotary head stock positioner, adjustable length tail stock, twin sub arc welding heads w/Lincoln powerfeed 10A controls, Weld Engineering flux box, power 2-axis slide, w/ballscrew drive and linear bearings, S/N VSC1500-30-26.

(3) CUSTOM, new 1994, adjustable ht. rails, w/approx. 24" vert. travels, single wire sub arc head w/ Lincoln NA9 control system, Weld Engineering flux box, variable spd. carriage travel, motorized rotary headstock and tailstock.

MIG WELDERS

(35) LINCOLN IDEALARC DC400, new 2019-2014, 400 amp @ 36 v., 100% duty cycle, w/Lincoln DH10 double head wire feeder.

(3) LINCOLN FLEXTAC 450 INVERTER WELDING MACHINES, 450 amp @ 38 v., 60% duty cycle, Lincoln DH10 double header wire feeder.

**DON'T
MISS
THIS
SALE!**

PARTIAL VIEW OF
LINCOLN IDEALARC
DC400 MIG
WELDERS



2000

PRESTON EASTON SUB ARC SIDE BEAM ROTARY WELDING STATION



VIEW OF LINCOLN IDEALARC DC400 MIG WELDERS



LINCOLN WELD FUME VACUUMS

TIG WELDERS

(2) **MILLER SYNCROWAVE 350LX**, 350 amp @ 40% duty cycle, 34 v., cooler base, tig torch, foot pedal control, S/N MC150015L, S/N KJ188188.

MILLER SYNCROWAVE, 250 amp @ 30 v., 40% duty cycle, tig torch cooler base, foot pedal control, S/N LB010560.

MISCELLANEOUS WELDERS

LINCOLN POWERWAVE 1000 WELDING POWER SUPPLY, new 2007, 1,000 amp @ 44 v., 100% duty cycle, on fabricated steel stand, S/N 21071200843.

(3) **LINCOLN IDEALARC DC1000 WELDING MACHINES**, 1,000 amp @ 50 v., 100% duty cycle, S/N U1000937778, S/N U1930718859, S/N U1050909764.

(4) **LINCOLN DC655 WELDING MACHINES**, 650 amp @ 44 v., 100% duty cycle, S/N U1000819517, S/N U1000934714, S/N U1000819518, S/N N.A.

(3) **LINCOLN R3R 500 WELDING MACHINES**, 500 amp @ 40 v., 60% duty cycle, S/N U1930213084, S/N 860349, S/N N.A.

MILLER AXCESS 450 MIG WELDING SYSTEM, 450 amp @ 36.5 v., 100% duty cycle, Miller ROI robotic interface control, fabricated steel stand, S/N MB3301140U.

WELDING ACCESSORIES

BUG-O CIRCULAR WELD OVERLAY SYSTEM, variable spd. rotation, programmable overlap cycle, circle motor drive, w/control pedestal.

(4) **LINCOLN WELD FUME VACUUMS**, new 2006, w/articulating collector hoses, Mdl. STATI-FLEX200-M.

WELD ENGINEERING PORTABLE FLUX RECOVERY UNIT, Flux Vacuum Mdl. PF-2A/B, new 2018, S/N 122280W.

CUSTOM WELDING POSITIONER, 250-lb. cap. w/manual tilt and variable rotation on fabricated stand.

MISCELLANEOUS EQUIPMENT

ELECTRIC FIRED STRESS RELIEF FURNACE, lift-off/shelf-type, 60"W. x 48"H. x 19'6"L., ceramic wool lined, w/temperature controller.

SULLAIR MDL. 20-125L ROTARY SCREW AIR COMPRESSOR, 125 HP, skid mounted, air cooled, 74,000 H.O.M., 110 PSI max. rated pressure, S/N 003-60337.

LARGE SELECTION OF BLIND FLANGES UP TO 24" DIA.

WESCO DIE CART, battery powered, die lifter.

(4) **ASSORTED BANDING CARTS.**

LARGE SELECTION OF C-CLAMPS.

DAYTON MANUAL DIE LIFTER, hyd. hand pump, 2000-lb. cap., 63" lift ht.

ASSORTED DAYTON SHOP VACUUMS.



MILLER
AXCESS 450
MIG WELDING SYSTEM

2006



WELD ENGINEERING PORTABLE
FLUX RECOVERY UNIT



AUCTION

WEDNESDAY, AUGUST 10 • 10:00 A.M.
LIVE ONLINE WEBCAST (NO ONSITE BIDDING)

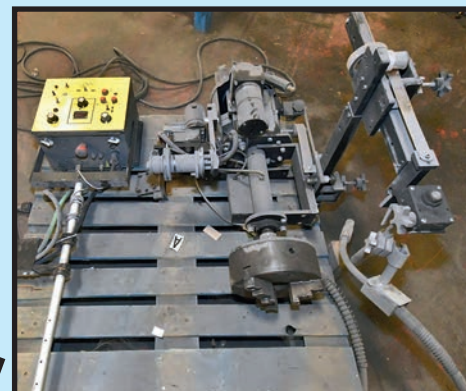


MILLER TIG WELDER



LINCOLN FLEXTEC 450 INVERTER WELDERS

3
AVAILABLE



BUG-O CIRCULAR WELD OVERLAY SYSTEM



(1 OF 2) SHARP 4' X 11" RADIAL ARM DRILLS



CARLTON 5' X 15" RADIAL ARM DRILL



SHARP 15" X 60" ENGINE LATHE

MACHINE TOOLS

(2) SHARP MDL. RD-1230 RADIAL ARM DRILLS, 4' x 11" columns, spds: 44–1,500 RPM, plane box tbl., air clamping fixture, 5 HP spd. drive motor, S/N 17488, S/N 14764.

CARLTON RADIAL ARM DRILL, 5' arm, 15" columns, spds.: 12–1,200 RPM, power head traverse, power clamping, fabricated steel tbl., threading leads, S/N 3A-5719.

SHARP MDL. 1560S GAP BED ENGINE LATHE, new 1998, 10" 3-jaw chuck, steadyrest, 70–1,800 RPM, 2-1/2" spd. hole, 1/2" threading, quick change tool post, S/N 984011.

HEM HORIZONTAL BANDSAW MDL. H120LM, S/N 383193.

HABERLE METAL CUTTING CHOP SAW, 12" dia., w/swivel vise and fabricated steel base.

TRUCK TRACTOR

2011 PETERBILT MDL. 386 SLEEPER CAB, 485 HP Paccar MX-13 engine, Eaton-Fuller 10-spd. transmission, 6X4 driveline, G.V.W.R. 50,000-lb., Merritt aluminum rigging rack, approx. 607,000 miles, OK. Lic. #061-76V, VIN 1XP-HDP9X-0-BD126109.

FLATBED TRUCK

2006 FORD F-350 XL SUPER DUTY 1 T., Powerstroke turbo diesel 6L V8 engine, auto. trans., 11' diamond plate steel deck w/stake pockets, rub rails, hideaway 5th wheel ball, side toolboxes, auto. trans., OK Lic.# V53-081, VIN 1FDWF36P56EC28517.

DIESEL FORKLIFT

TAYLOR 25,000-LB. @ 24" LOAD CAP. FORKLIFT, diesel, Mdl. MYP-250, dual front pneu. tires, 96" forks, 96" wide fork carriage, S/N P-14617.



PETERBILT MDL. 386 SLEEPER CAB TRUCK TRACTOR



TAYLOR 25,000-LB. CAP. DIESEL FORKLIFT



FORD F-350 XL SUPER DUTY 1 T. FLATBED TRUCK



VERTICAL TURRET LATHE WITH RAM HEAD

56" BULLARD DYNATROL HI COLUMN, 56" 4-jaw chuck w/ built-in master jaws, 60" ht. under rail, 71-3/4" ht. under turret face, 5-pos. power index turret head, 30-3/4" vert. turret head travel, 11" heavy duty ram head w/60" vert. ram travel, (20) spds. from 5–200 RPM, 40 HP main motor, 5 HP rail elevation motor, hardened and ground ways on cross rail and turret swivel, pistol grip pendant control, auto. lubrication, variable rapid traverse, S/N 33660. (Disassembled and in storage, ready for loading/shipping.)



LOCATION #2

D.C.I. STORAGE

8501 EAST FREEWAY, HOUSTON, TEXAS 77029

INSPECTION: By Appointment Only.

Contact Robert Brundage at (713) 691-4401 for Inspection Information.

LOCATION #3
TOTCO MACHINING, INC.
6939 FAIRBANKS NORTH HOUSTON,
HOUSTON, TEXAS 77040
INSPECTION: By Appointment Only.
 Contact Tra Townsend (713) 906-9439.



TOYODA MDL. BM-1600 VERTICAL MACHINING CENTER



SHARP MDL. SV-4020 VERTICAL MACHINING CENTER



AMERA SEIKI MDL. T-312 CNC LATHE



VERTICAL MACHINING CENTERS

TOYODA MDL. BM-1600, new 2006, Fanuc 18-MB CNC control, 67" x 31.5" tbl. size, 4,400-lb. max. tbl. load, 63" X, 31.5" Y, 31.5" Z-axis travels, 50 taper, 20 HP, 6,000 RPM, 30-pos. ATC, thru spdl. coolant, S/N 6020.

SHARP MDL. SV-4020, new 2011, Fanuc Oi-MD CNC control, 24.8" x 19.6" tbl. size, 40" X, 20" Y, 20"-Z axis travels, 40 taper, 15 HP, 24-pos. ATC, S/N 00800587.

FLATBED CNC LATHE

VICTOR MDL. 35160DCL, new 1999, Fanuc 20TA Teach-in CNC control, 34.6" swing over bed, 20.1" swing over cross slide, 52" swing in gap, 160" distance btwn. centers, 6" bore, 30 HP, front/rear tool posts, steadyrests, S/N PK3552016.

CNC LATHE

AMERA SEIKI MDL. T-312, new 2008, Fanuc Oi-TC CNC control, 17.7" max. turning dia., 30" max. turning length, 3.5" bar cap., 30 HP, 12-pos. turret, 12" Kitagawa pwr. chuck, S/N N.A.

ENGINE LATHES

27" X 120" RYAZAN, Newall DRO, taper attach., pwr. feeding compound, 4" spdl. bore, 3-jaw chuck, 4-way toolpost, steadyrest.

20" x 80" LONGEM (ENCO) MDL. LG2080D, 12" 3-jaw chuck, 3.25" bore, Newall DRO, steady and follower rest.

HORIZONTAL BANDSAW

WF WELLS MDL. F-15, 15" x 17" cap., twin post, 3 HP.

FORKLIFTS

TOYOTA MDL. 2FG30, 6,600-LB. CAP., 118" lift ht., 2-stage mast, LP powered, solid tires.

TOYOTA MDL. 40-4FG20 H6, 3,960-LB. CAP., 118" lift ht., 2-stage mast, gasoline powered, solid tires.

PRECISION MACHINE ACCESSORIES & MORE
 MACHINE VISES; TOOLING; 3 T. JET ELEC. HOIST AND MORE.



VICTOR MDL. 35160DCL FLATBED CNC LATHE



WF WELLS MDL. F-15 HORIZONTAL BANDSAW



TOYOTA 3,960-LB. CAP. GASOLINE FORKLIFT



TOYOTA 6,600-LB. CAP. LP FORKLIFT

LOCATION #4
CORE MECHANICAL
1081 PRUITT ROAD, SPRING, TEXAS 77380

INSPECTION: By Appointment Only. Contact Jennifer Murillo at (281) 809-0192

MECHANICAL PRESSBRAKE

WYSONG MDL. 90-10, 12' bed, 3" stroke, 4" adj., 12" max. die space, S/N PB56-123.

LOCATION # 5

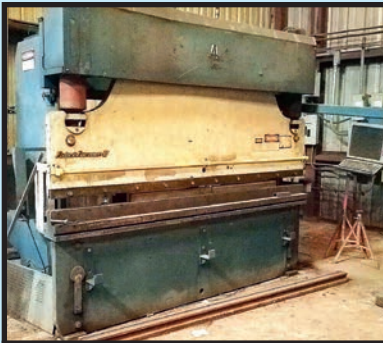
Surplus to the Ongoing Operations of

PINPOINT MACHINE

19995 HWY. 167,
DRY PRONG, LOUISIANA 71423

INSPECTION: By Appointment Only.

August 8 & 9 or Contact Richard Rogers at (318) 290-3296
for appointment.



CNC HYDRAULIC PRESSBRAKE

**PACIFIC 130 T. CAP. MDL. FF135-10-II S
"FABRI FORMER II"**, made in the USA,
120.5" bed length, 101-3/4" btwn. hous-
ings, 7" throat, 30 HP motor, S/N A861
(1991) (Note: Control needs work. Both
cylinders have been repacked w/new seals
and piston rubber.) **(No charge loading.)**



FOSDICK RADIAL ARM DRILL

FOSDICK 17" COLUMN X 7' ARM, 15 HP
motor, 6 MT quill, H.D. quill up to 5-3/4" dia.,
21.5" quill travel, coolant pump, 14-1,010
RPM range, rapid traverse, S/N 12113W.
(No charge loading.)



LARGE CAPACITY CNC SURFACE GRINDER

**WILLIS DELTA MAXI MDL. 2000/1000 39"
X 78" (1,000 MM X 2,000 MM) CAP.**, new
2004, NUM CNC control, variable drive, hyd.
cooler, 31.5" x 59" chuck, ball screws,
machine weight approx. 31,000-lb., 5,000
KG (11,000-lb.) tbl. load, 15 kW (20 HP) spdl.
motor, 900-2,000 RPM
spdl. spd., S/N 981104. **(No charge loading.)**



GAP BED HOLLOW SPINDLE ENGINE LATHE

**DEAN SMITH & GRACE 31" X 216"
CAP. MDL. 9D**, 48" sw. in gap, 24"
over cross slide, 5-1/2" spdl. bore,
9.9-180 RPM, 30" 4-jaw chuck,
gap has 15" space, (2) steadyrests,
5 MT tailstock spdl., change gears,
20 HP motor, S/N 19917. **(No charge
loading.)**



COMBINATION PLASMA/OXY FUEL CUTTER W/BEVELING

**MESSER PLASMA HIGH
DEFINITION 20'W. CUTTING
GANTRY MDL. MPC2018**,
new 2008, updated control,
20'W. cutting cap., enough track for approx. 110'L.
max. longitudinal gantry travel, bevel-cutting capa-
bility, Hypertherm 260 plasma power source, S/N
MPC2018LP-08-5133. Does not include work piece
tbl. **(No charge loading.)**



MECHANICAL IRONWORKER

**BUFFALO 130 T. CAP. MDL.
27 UD**, rated specs in
65,000-lb. tensile strength
mild steel are: 130 tons
punch cap., 1-3/8" dia. hole
in 1" thick steel, 30" dp.
throat, extra high throat for
working large H-beams.
(No charge loading.)



TURRET LATHE W/THREADING

WARNER SWASEY MDL. 2A LOT #621 M-3470 W/THREADING,
Cushman air powered chuck, coolant, spdl. inching, 18" dia. chuck,
taper attachments, rapid traverse, cross-sliding turret, 1,180 RPM
max, threading, 4.5" actual bore size, 40 HP motor, S/N 2611959.
(1974). **(No charge loading.)**



WELDING POSITIONER

**RANSOME SIZE #160 16,000-LB.
CAP.**, rated at 12" above tbl., 12" ec-
centric, 7-1/2 HP on tilt function, 5 HP
motor, Face Plate: 81" dia., mounted
on 14" I-beams. Can be demon-
strated under power. **(No charge
loading.)**

DON'T MISS THIS SALE!

FOR BIDDING AT THIS AUCTION. Go to www.pmi-auction.com and click on BidSpotter or proxibid on our calendar page for this auction sale.

LOCATION #6 ABBOTT MACHINE COMPANY

700 W BROADWAY,
ALTON, ILLINOIS 62002

INSPECTION: By Appointment Only.
Contact Mike St. Peters
at (618) 465-1898.



AMADA 78" X 78" LARGE CAPACITY HORIZONTAL BANDSAW

LARGE CAPACITY HORIZONTAL BANDSAW

AMADA 78" X 78" MDL. H-2000, 78" x 78" cap., 3.25" blade width, Giddings & Lewis air lift 60" x 72" rotary tbl., 220,000-lb. shuttle tbl. load, 25-158 FPM blade spds., 15 HP blade drive. (Note: This machine has been disassembled for shipment and is ready for loading).



MIGHTY TURN 21" X 80" GAP BED ENGINE LATHE



APHIL MDL. RFTE
SPOT WELDER



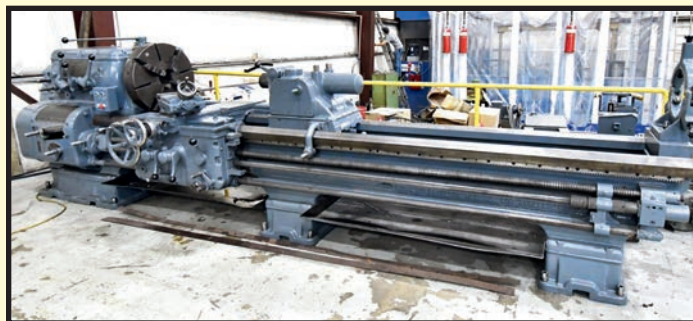
OMAX MDL. 2652 WATERJET MACHINE



OMAX CNC CONTROL

WATERJET MACHINE

OMAX MDL. 2652, 4'4" x 2'2" cutting envelope, 5'9" x 2'6" tbl. size, 50,000 PSI pressure pump, OMAX CNC control and software, S/N A511725.



AXELSON 28.5" X 120" ENGINE LATHE

ENGINE LATHES

AXELSON 28.5" X 120", 28-1/2" x 120" center, spds. 20-300 RPM, 2-1/2" spdl. hole, steadyrest, 24" 4-jaw chuck, S/N 3764.

MIGHTY TURN 21" X 80" GAP BED MDL. ML2180GL, new 2008, 21" swing over bed, 80" distance btwn. centers, (2) steadyrests, taper attachment, digital readout, spds. 11-1,600 RPM, 3.15" spdl. bore, 20" 4-jaw chucks, tool post not included, S/N 49123196.

SPOT WELDER

APHIL MDL. RFTE, 20 KVA, 14" arms, 550 v., 60-cycle, weld timer, mechanical foot pedal, S/N 6898.



LOCATION #7 360 ROLL WORKS

360 NORTH OLD ST. LOUIS ROAD, WOOD RIVER, ILLINOIS 62095

WASHING MACHINE

MART TORNADO 60 WASHING MACHINE, new 2001, 60" turntable, 48" work ht., 4,000-lb. tbl. load, 140-180 deg. heating, 20 HP, S/N 7651.

INSPECTION: By Appointment Only.
Contact Mike St. Peters at (618) 465-1898.

DON'T MISS THIS SALE!



**HE&M, INC. 40"
MDL. 2000-40
LARGE CAP.
HORIZONTAL
BANDSAW**



**KASTO 40"
MDL. PBA-
1060/1260U
LARGE CAP.
HORIZONTAL
BANDSAW**

LOCATION # 8

Surplus to the Ongoing Operations of

METAL CUTTING USA

7208 GESSNER ROAD, HOUSTON, TEXAS 77040

INSPECTION: By Appointment Only. Contact Doug Stanford at (713) 466-8545.

LARGE CAP. HORIZONTAL BANDSAWS

HE&M, INC. 40" MDL. 2000-40 AUTOMATIC, 40" round cap., power clamping, 15 HP motor, 40/20 amp, 110 PSI, 10' power infeed conveyor, freestanding operator control console, 220/440 v., S/N N.A.

KASTO 40" MDL. PBA-1060/1260U, 40" round cap., 5' power infeed conveyor, power clamping, freestanding operator console, hyd. power supply and manifold, 440 v., S/N 6047102018. (1999) (Unit K-3)

KASTO 32.5" MDL. HBA-U-8x10 AUTOMATIC, 32.5" round cap., power clamping, Kasto compact control w/LCD display, power infeed and out-feed conveyor, chip conveyor, S/N 3379620(2004). (Unit K-5)

TRUCK TRACTOR

1999 MACK MDL. CH-600 DAY CAB, E7-427 engine, 19,182.8 hours on dashboard meter, tandem axle, headache rack, CB radio, TX Lic. No. 1K15759, VIN 1M1AA8Y6XW09612.

HYD. TELESCOPING MANLIFT

JLG MDL. 80HX, 80' reach, 2-wheel steer, diesel engine, 6,072 H.O.M., S/N 0300059946.



1999 MACK MDL. CH-600 DAY CAB



JLG MDL. 80HX HYDRAULIC TELESCOPING MANLIFT



KASTO 32.5" MDL. HBA-U-8X10 LARGE CAP. HORIZONTAL BANDSAW

DON'T MISS THIS SALE!

PARTIAL TERMS & CONDITIONS:

An 18% Buyer's Premium Will Apply.

Everything will be sold to the highest bidder or bidders for cash in accordance with the auctioneer's Customary Terms of Sale, copies of which will be posted on our website.

ALL PAYMENTS MUST BE MADE BY CASHIER'S CHECK, WIRE TRANSFER OR COMPANY CHECK WITH BANK LETTER GUARANTEEING PAYMENT TO PLANT & MACHINERY INC.

Here is an example of what your letter should be: Mr. "Customer Name" is a customer of this bank. This bank will guarantee unqualified payment to PMI on the account listed herein up to the amount of \$ _____. This letter is good until September 12, 2022.

In default of payment of bills in full within the time therein specified, the Auctioneer in addition to all other remedies allowed by law, may retain all monies received as deposit or otherwise, as liquidated damages. All items must be removed by the time announced at the start of the sale.

Lots not paid for and/or removed within the time allowed may be resold at public or private sale without further notice, and any deficiency, together with all expenses and charge of resale, will be charged to the defaulting purchaser.

The buyer acknowledges that he or an agent has inspected all of the assets upon which he will be bidding and/or does purchase.

Buyer agrees to accept assets purchased "AS IS," WITH "ALL FAULTS"

AND "WITH REMOVAL AT BUYER'S RISK AND EXPENSE." THE AUCTIONEER EXPRESSLY DISCLAIMS ON THE PART OF THE AUCTIONEER AS AGENT AND THE SELLER, ANY WARRANTY AS TO FITNESS OR USABILITY OF ALL THE ASSETS, AND THE BUYER EXPRESSLY WAIVES ANY CLAIM IN RESPECT TO ANY POSSIBLE FUTURE USE OF ANY ASSET PURCHASED FOR ANY PURPOSE WHATSOEVER.

The buyer does hereby assume and does agree to indemnify and hold the auctioneer harmless from any future claim which shall pertain to the fitness or use of that asset as being purchased. Riggers, movers, electricians and buyers performing work at the Auction Site must provide PMI with evidence of insurance. The insurance coverage must be at a level acceptable to PMI and to the seller. PMI reserves the right to withdraw items, alter the order of the sale, accept bids from the seller, and group lots as it may deem appropriate. This auction may include consignment items.

Although all information has been obtained from sources deemed reliable, the auctioneer and seller make no warranty or guarantee, expressed or implied, as to the accuracy of the information herein contained, or contained in our catalog. It is for this reason that buyers should avail themselves of the opportunity to make inspection prior to the auction. Although it is not likely, auction sales are subject to cancellation or postponement. Kindly contact auctioneer prior to attendance.

These terms and conditions may be modified or supplemented by language in the catalog available at the sale site or by announcement at the start of the sale. Bidders should be attentive to those announcements and to the catalog language.

ONLINE REGISTRATION

Register to bid at

BidSpotter or **proxibid**

1. Use the link to Bidspotter.com or Proxibid.com on PMI's website calendar. www.pmi-auction.com DO IT NOW!
2. This auction will require a Cash, or credit card, or debit card, 100% refundable deposit. If by credit or debit card, it can be added through the Bidspotter.com or Proxibid.com fully secure and PCI compliant registration process and will be assessed a 100% refundable \$3,000 (US Bidder) or a \$10,000 (Foreign Bidder) deposit in order to be approved to bid online with this auction. Cash deposits can be made by wire transfer. **DON'T WAIT.** If you are unsuccessful in the auction, the refund of your credit/debit card deposit will occur within 24 hours. Cash deposits will be expedited as well.

If you need assistance, don't hesitate to call (713) 691-4401.

**ALL BIDS ARE SUBJECT TO AN
18% BUYER'S PREMIUM.**



(3) WELD ENGINEERING HIGH TEMP FLUX OVENS



HOTSY TRAILER MOUNTED HOT WATER PRESSURE WASHER



KUBOTA MDL. L3010 UTILITY FARM TRACTOR

LOCATION #9

Surplus to the Ongoing Operations of
NATIONAL OILWELL VARCO
12950 WEST LITTLE YORK ROAD,
HOUSTON, TEXAS 77041

INSPECTION: By Appointment Only. Contact Mike O'Malley at
(713) 829-1129.

TANK TURNING ROLLS

30 T. CAP. DRIVE AND IDLER SET.

(2) PROFAX MDL. TR-2000 DRIVER AND IDLER SETS: Each set contains:
(1) 1,000-lb. cap driver and (3) matching idlers.

FLUX OVENS

(3) WELD ENGINEERING MDL. FO-700-HT HIGH TEMP., 700-lb. cap.,
4,000 watt heating element, 300–700 F. deg. temp. range, 460 V., 3-phase/
60 HZ.

PHOENIX TYPE 950FX MDL. 5, 190–450 deg. F, 3,000 watt heating element.

STRESS RELIEVING CONTROL CONSOLES

(2) WELD ENGINEERING, w/leads; ANALYTIC STRESS.

MISC. WELDING EQUIPMENT

WELDING MANIPULATOR HEAD, Lincoln Md. MAX SA10 weld control, flux
hopper; PORTABLE WELD ENGINEERING DRY ROD OVENS; FLUX SYS-
TEM; FUMEAIR MDL. 750 FUME EXTRACTOR; DRY ROD OVEN; MORE!

TRAILER MOUNTED HOT WATER PRESSURE WASHER

HOTSY MDL. HX5843R.2 PUMP, 4,350 PSI, elec. start, Honda 20.0 V-twin
gasoline air cooled 4-stroke OHV engine, diesel fired heater, 165 gal. water
storage tank.

UTILITY FARM TRACTOR

KUBOTA MDL. L3010, HST trans., 540 RPM PTO, ROPS, 1,192.7 H.O.M., Md. LA481 front
end loader attachment, S/N 10777, box blade attachment.

RECIPROCATING TYPE AIR COMPRESSOR

MAGNETEK 15 HP, electric, 3-stage compressor, air receiver, skid mtd., (out of service.)

LARGE CAPACITY LIFT TABLES

(2) HYDRAULIC LIFT TABLES, 59" x 71" overall tbl. surface, approx. 80,000-lb. cap., track
mtd.

LARGE GRANITE SURFACE PLATES

(2) GRAY GRANITE: (1) 96" x 72" x 12" thk.; (1) 48" x 72" x 10" thk.

STACKABLE WIRE MESH STEEL CONTAINERS

(APPROX. 1,300) IN THREE SIZES: up to 45" x 38" x 24"H.

MISC. MATERIAL HANDLING EQUIPMENT

(33) WALL MOUNTED JIB CRANES, 1 T. cap., 2 T. cap. and 3 T. cap.; BRIDGE CRANE
HOIST, Shawbox 5 T. cap.; ELECTRIC HOISTS: Assorted Konecranes, Yale and Coffing, 1 T.,
2 T. and 3 T. capacities.



(APPROX. 1,300) STACKABLE WIRE MESH STEEL CONTAINERS



LARGE CAPACITY HYDRAULIC LIFT TABLES



SAMPLE VIEW OF COLUMN JIBS



ANALYTIC STRESS CONTROL
CONSOLE



**DRESSER
HYDRAULIC
TELESCOPING
BOOM ROUGH
TERRAIN
CRANE**



**RENNER
MOBILE
GANTRY
CRANE
SYSTEM**

WED., AUG. 10 10:00 A.M. ONLINE WEBCAST (NO ONSITE BIDDING)

HYDRAULIC TELESCOPING BOOM ROUGH TERRAIN CRANE

DRESSER MDL. GALION 150 FA, 4-stage boom, diesel engine, outriggers, H.O.M. 6,784, S/N 9700-X700 (out of service).

MOBILE GANTRY CRANE SYSTEM

RENNER, approx. 20'W. x 35'L. x 35'H., CAT 3208 diesel engine, S/N N.A. 9700 (out of service).

FORKLIFTS

CAT DP30K, 5' forks, H.O.M. 21,902, S/N AT-14C35140; **CAT MDL. P6000**, 3.5' forks, S/N AT-14E00179; **CAT MDL. P600-D**, S/N AT14E20164 (needs transmission repair); **CAT MDL. DP40**, 187" lift ht., 8' forks, H.O.M. 15,160, S/N 3CM12482; **CAT MDL. N/A**, 5' forks; **CROWN MDL. SERIES 3400 ELECTRIC ORDER PICKER**, no charger, S/N 1A318431; (Auctioneer's Note: Most of these appear to be out of service)

MISCELLANEOUS PLANT SUPPORT & MATERIAL HANDLING EQUIPMENT

MAGLINER 5'10"W. X 36'L. MOBILE LOADING RAMP, manual pump; **MASSEY FERGUSON MDL. 383-2WD TYPE 5266 UTILITY FARM TRACTOR**, H.O.M. 1,333, S/N R24162; **(10) 1.25" DIA. WIRE ROPE LIFTING SLINGS**; **1 T. CAP WALL JIB**; **200 T. CAP. HOOK BLOCK**, disassembled; **SULLAIR MDL. 20-125HACAC ROTARY SCREW TYPE AIR COMPRESSOR**, S/N 003-88430; **MORE.**



**GEKA MDL. HYDRACROP-100 HYDRAULIC
IRONWORKER**

RADIAL ARM DRILLS

NATCO CARLTON MDL. 4A 8' ARM X 19" COLUMN, custom base, S/N 4A6063; **CARLTON 7' X 19"**; **G&L BICKFORD CHIPMASTER 4' X 13"**.

HYDRAULIC IRONWORKER

GEKA MDL. HYDRACROP-100, 100 T. punch cap., angle shear, etc., S/N 12990

MISCELLANEOUS MACHINE TOOLS

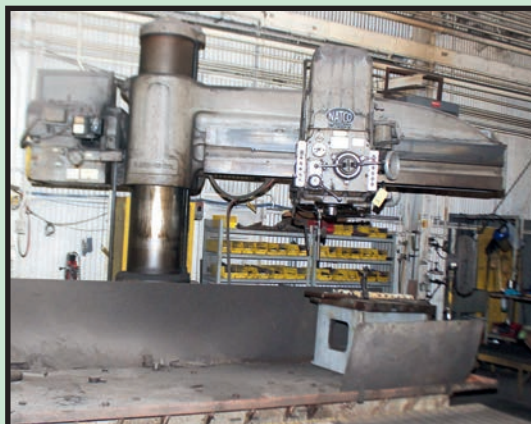
BLANCHARD ROTARY SURFACE GRINDER, MDL. 20, electro-magnetic chuck, S/N 13497; **BRIDGEPORT VERT. TURRET MILL MDL. 8516**; **K.O. LEE TOOL AND CUTTER GRINDERS**; **BROWN & SHARPE #5 SURFACE GRINDER**; **WILTON AND OTHER BRAND HORIZ. BANDSAWS**; **SAWS**; **MORE.**

MISCELLANEOUS FABRICATING EQUIPMENT

(2) METAL MUNCHER MDL. GB40 GAP BED HYD. PUNCH PRESSES; **SCOTCHMAN IRONWORKER**; **ALTRA 30' X 8' PLASMA CUTTING TBL.**, w/Hypertherm Hyspeed Mdl. HSD130 plasma system, Burney Phantom ST ultrasharp control (out of service); **RANSOME 1,000-LB. CAP. WELDING POSITIONER**; **MORE**

MISCELLANEOUS WELDING & CUTTING EQUIPMENT

MILLER POWER SOURCES INCL. DIMENSION 452, new 2018, w/wire feed, S/N MJ280157C; **MILLER SUB ARC MDL. AC/DC 1000 DIGITAL**, new 2014, S/N ME300206G; **(3) DELTAWELD 451S**; **SBH-444**; **SRH-333**; **CP-302**; **DP-300**; **CP-200**; **(3) LINCOLN IDEALARC PWR. SOURCES**: **DC-1000**; **DC-600**; **CV-100**; **HYPERTHERM MAX100 PLASMA POWER SUPPLY**, S/N 70-6006562; **THERMAL DYNAMICS PAK45 PLASMA CUTTER**, S/N 04780411; **MORE.**



NATCO CARLTON MDL. 4A RADIAL ARM DRILL

LOCATION #10

Surplus to the Ongoing Operations of
**HUDSON PRODUCTS
CORP.**

**9660 GRUNWALD ROAD,
BEASLEY, TEXAS 77417**

**INSPECTION: Monday & Tuesday,
August 8 & 9, 9:00 A.M. to 4:00 P.M.
Each Day.**

**SAMPLE
VIEW OF
FORKLIFTS
(OUT OF
SERVICE)**



**MILLER
SUB ARC
AC/DC 1000
DIGITAL
POWER
SOURCE**



**MASSEY FERGUSON MDL. 383-2WD UTILITY
FARM TRACTOR**



MAZAK SLANT TURN 50N CNC SLANT BED LATHE



MSO MDL. FGHU400 2500 30.1.1956 UNIVERSAL CYLINDRICAL GRINDER

LOCATION # 11 LIBERTY PLANT MAINTENANCE 1825 COUNTY ROAD 614, DAYTON, TEXAS 77535

INSPECTION: Monday & Tuesday,
August 8 & 9, 9:00 A.M. to 3:00 P.M.

MACHINE TOOLS

MAZAK SLANT TURN 50N CNC SLANT BED LATHE, Mazatrol T Plus control, 18" SMW Autoblock 3-jaw chuck w/7" hole, hyd. steadyrest, 10-pos. tool turret, tailstock, S/N 133719; **EXCEL MDL. PMC-10T24 CNC VERT. MACHINING CENTER**, Fanuc 21-M control, 19.5" x 24" tbl. 24-pos. ATC; **LODGE & SHIPLEY MDL. 14" ENGINE LATHE**, 16" sw. overbed x 96" centers, 12" 4-jaw and 12" 3-jaw chucks; **DIANICHI MDL. 3GA COMBINATION HORIZ. MILL/ENGINE LATHE/VERT. MILL/SHAPER**, 8" x 24" tbl. mill, 16" x 42" lathe, 7" 3-jaw chuck, metric/inch threading.

GRINDERS

BROWN & SHARPE RECIPROCATING TYPE MDL. MICROMASTER 1236, 12.5" x 36.5" electromagnetick chuck, S/N 523-1236-364; **HANCHETT 40" VERTICAL ROTARY SURFACE TYPE**; **BROWN & SHARPE MDL. 1 UNIVERSAL CYLINDRICAL**, WEG motorized; **SUMMIT MDL. RT-SUPER UNIV. CYLINDRICAL**, 83" tbl. motorized workhead; **LANDIS 10 X 48 UNIV. CYLINDRICAL**, motorized workhead; **MSO MDL. FGHU400 2500 30.1.1956 UNIV. CYLINDRICAL**, 144" worktable, motorized workhead; **LANDIS UNIV. CYLINDRICAL**, 132" worktable, motorized workhead; MORE.

ELECTRIC OVEN

GRIEVE MDL. WRC-446-750, 750 degree F max., outside dims: 84"D. (plus 19" in back for blower box) x 67"W. x 88"H., S/N 411763.

MISC. PLANT & SHOP SUPPORT EQUIPMENT

4' X 12' X 6" THK BLACK GRANITE SURFACE; CUSTOM BROACH TABLE WITH LARGE QTY. BROACH TOOLING; DOWNDRAFT DEBURRING TABLE; 4' X 4' DIGITAL FLOOR SCALE; HOTSY ROTARY PARTS WASHER; COLLINS THREAD-O-MATIC 4" CAP. PIPE THREADER; RETRACTABLE AIR HOSE REELS; PIPE PLUGS; WELDING BOOMS; MORE

REPLACEMENT PARTS & EXPENDABLES

CONTENTS OF SEVERAL CONTAINERS INCLUDING ELECTRICAL SWITCHGEAR, ELECTRIC MOTORS AND MORE. PLUS: WELDING WIRE; E.D.M. WIRE; SUNNEN HONE TOOLING; ASSORTED GEAR HOBBS; UNUSED PVC VALVES AND COUPLINGS; STAINLESS STEEL FILTER CANNISTERS; CS VALVES; FOXBORO MEASURING TRANSMITTERS; DIAPHRAM PUMPS; SUMP PUMPS; MORE!

SAFETY & MATERIAL HANDLING EQUIPMENT

FALL PREVENTION DEVICES; PLATE DOGS; ROLLING A-FRAMES W/1 T. ELECTRIC CHAIN HOISTS; LARGE QTY. "THE PUMPKIN" SPILL CONTAINMENT DEVICES; SPILL CONTAINMENT PALLETS; MORE.

**DON'T
MISS
THIS
SALE!**



(1 OF 3) FALL PREVENTION DEVICES



SAMPLE VIEW OF CONTAINER CONTENTS OF ELECTRICAL



GRIEVE MDL. WRC-446-750 ELECTRIC OVEN



EXCEL MDL. PMC-10124 CNC VERT. MACHINING CENTER



SAMPLE VIEW OF TABLES FULL OF EQUIPMENT



HOTSY ROTARY PARTS WASHER



A-FRAME W/1 T. HOIST

PLANT & MACHINERY INC.

AUCTIONEERS • APPRAISERS • LIQUIDATORS • REAL ESTATE

P.O. Box 218568
Houston, TX 77218-8568

DATED MATERIAL – PLEASE DELIVER

WEDNESDAY, AUGUST 10 • 10:00 A.M.
LIVE ONLINE WEBCAST (NO ONSITE BIDDING)



**ATTENTION: PLANT MANAGER
OR EQUIPMENT BUYER**

Presorted
First Class Mail
U.S. Postage
PAID
Eugene, Oregon
Permit No. 17

**Late Model Fabricating Equipment
new as 2019; Machine Tools incl.
CNC Lathes & VMCs, Grinders, & More;
Trucks; Manlift; Utility Farm Tractor;
Hyd. Telescoping Crane; Mobile Gantry
Crane; Forklifts; All Types of
Shop Supplies; More**



MASSIVE CUSTOM PAINT BOOTH OF SHIPPING CONTAINER CONSTRUCTION

System constructed of (18) 40'L. and (21) 20'L. shipping containers plus mechanical components. It was engineered by Poteet Design Assoc. and built by Cor-Pro Systems. With a footprint of 86' x 62' x 75'H. to top of exhaust stacks, this amazing system includes blowers, stacks, roll-up doors, ductwork, etc. It has been disassembled and stacked in NOV Baytown's yard. The various containers now store many of the above-mentioned components, and other components are stacked in the vicinity. Some containers incorporate the mechanical workings of the system into their structure, as well as contain various loose parts of the system such as ductwork. To be sold in its entirety. Design pdfs are available on our web page for this auction.



LOCATION #12

Surplus to the Ongoing Operations of

NOV BAYTOWN

**4123 OSCAR NELSON JR. DRIVE,
BAYTOWN, TEXAS 77523**

INSPECTION: By Appointment Only.

Contact Mike O'Malley at (713) 829-1129



LARGE CAPACITY HEADSTOCK TAILSTOCK POSITIONER

MATCHED HEADSTOCK POSITIONERS, hyd. drive motor on headstock section, each one mounted on a 4-wheeled railcar truck (bogie). Overall dims.: 110"H. x 68.5"W. x 120"L.