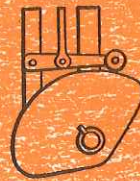


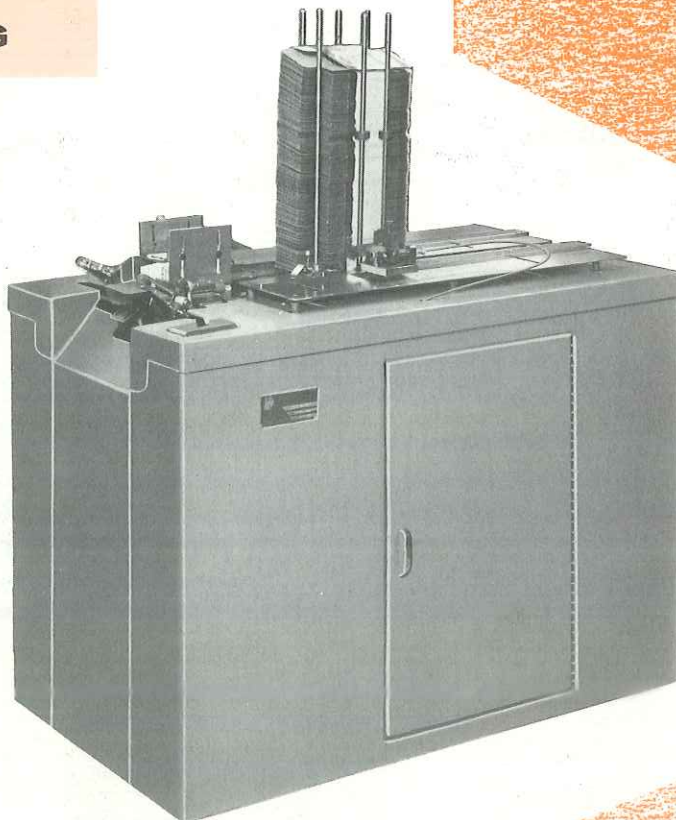
TUCK-O-MAT 50

**THE
FIRST
STEP
TOWARD
AUTOMATIC
CARTONING**



BIVANS

**CARTONING
MACHINERY**

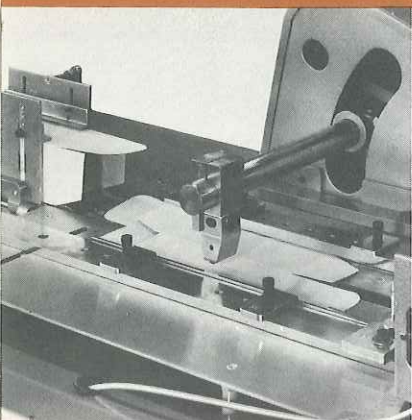


14

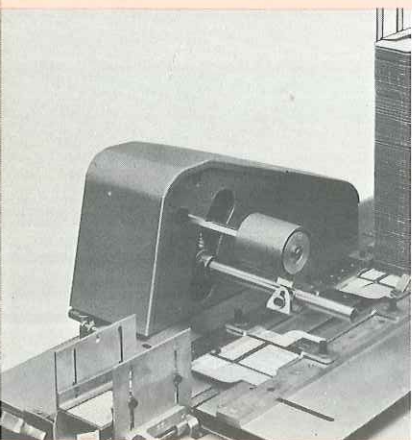
BIVANS TUCK-O-MAT 50

Versatility

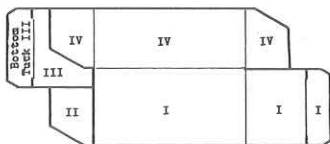
STANDARD ATTACHMENTS



DEBOSSING #321 Debosser — uses steel type for debossing without ink.

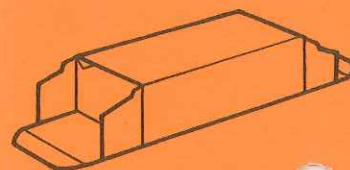


PRINTING #321 Printer — Rugged, simple, versatile . . . for field or factory installation on a Tuck-O-Mat or Convey-O-Mat carton setup machine. Uses rubber plate or base lock type to print code numbers or product identification within 1½"x1½" area on Right Side Panel IV, Back Panel I or Top Panel I (see diagram). For certain applications, metal type can be used for a maximum of two lines, each 1/16"x1½" long. Platen printing assures positive register, and type can be changed in minutes. You eliminate costly independent printing operations, inventory problems and overrun losses when you use the #321 Printer. See specifications on page 4.



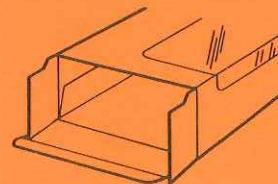
STRAIGHT TUCK

This standard attachment can be factory or field installed. Is easily interchanged with reverse tuck. Can not be used with printer or flap-gluing attachment.



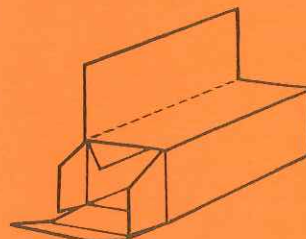
WINDOW

Many varieties of properly designed transparent window or die-cut cartons can be run without any attachment.



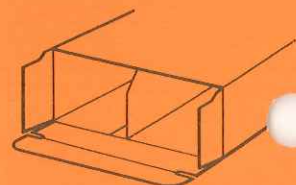
EXTENDED DISPLAY PANEL

Depending on the placement of the panel, an attachment may, or may not be required.



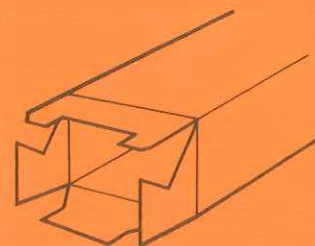
PARTITION

No attachment is necessary to run built-in partition cartons which are properly designed. Our engineering specialists will work with you to resolve your technical problems.



4-FLAP INTERLOCKING

Used where additional strength is required. Regular reverse tuck cartons may be run without removing the 4-flap attachment.



FLAP GLUING

Two spot pattern. Most often used for tamper-proof gluing of pharmaceutical cartons. A standard, removable attachment. Same carton size range as for printer.



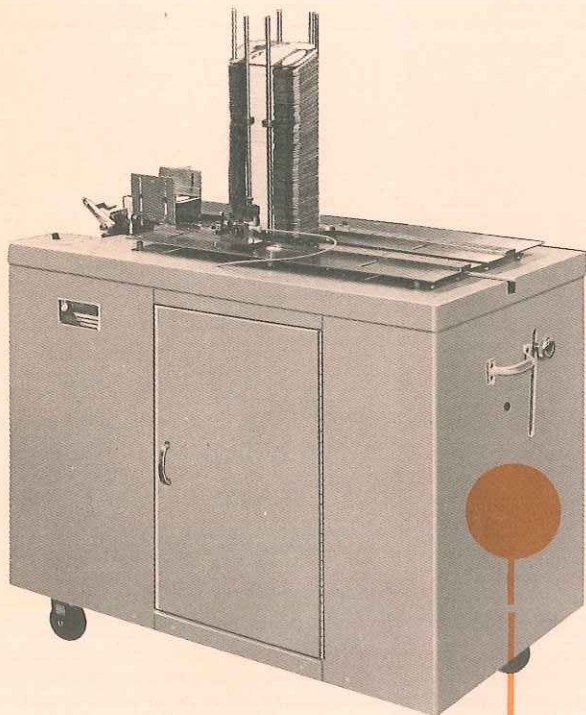
TUCK GLUING

Standard tuck gluing attachment for tamper-proof packaging. Can be used in conjunction with flap gluing for added strength where cartons are mailed without over-wrapping.



Glue pattern
1/8" - 1/2" Dia.

BIVANS TUCK-O-MAT 50

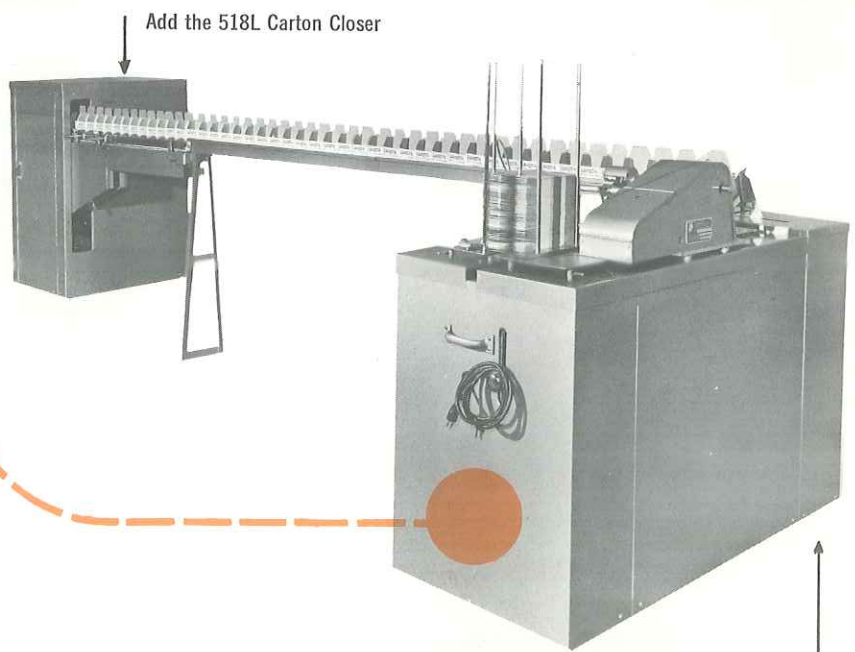


The Tuck-O-Mat 50 forms and bottom tucks cartons . . . up to 4500 per hour . . . it organizes and paces the entire cartoning operation. This rugged, compact machine is so efficient and dependable that the same size carton may be run on it year after year, with little or no adjustment. Yet its simple design offers change-over time of five to fifteen minutes. It is caster mounted for convenient use in any part of the plant. Most owners find that their Tuck-O-Mats are fully paid for in three to five months of operation at full capacity. The Tuck-O-Mat is ideal for test marketing use. It is unsurpassed for special or patented cartons as one or more factory-modified Tuck-O-Mats can be ready to run in your plant for one-half to one-tenth the price and delivery time of a custom built cartoner. Change parts for different carton sizes are inexpensive and available on short notice. A wide range of standard attachments offers adaptability to many different carton types and added functions. The Bivans Tuck-O-Mat 50 could well be the most widely used packaging machine in your plant.

Adaptability — CONVERTS TO COMPLETE CARTONING SYSTEM

To your Tuck-O-Mat add a Convey-O-Mat attachment. You then have a unit which orients the cartons in vertical position and pushes them in front of the operator for filling. Then the operator simply tucks the top of each carton and places it in the shipping case.

Add the 518L Carton Closer and you eliminate all manual handling of the cartons.

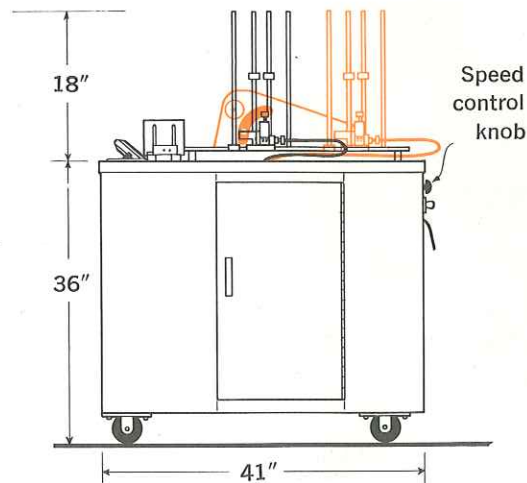
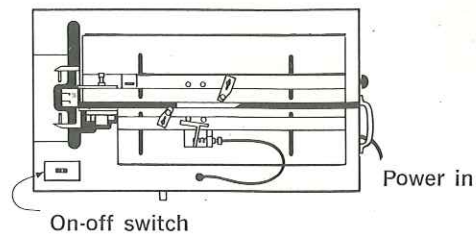
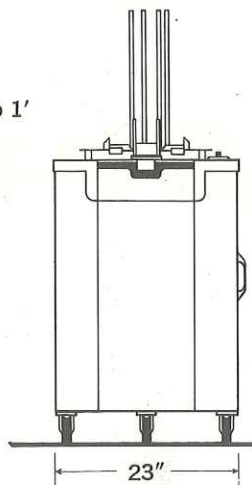


Add the Convey-O-Mat attachment = model 54L

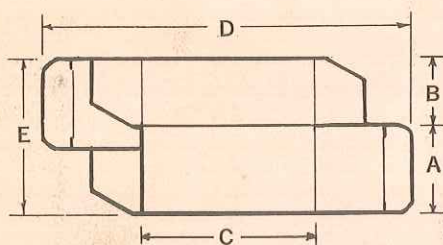
TUCK-O-MAT 50

SPECIFICATIONS

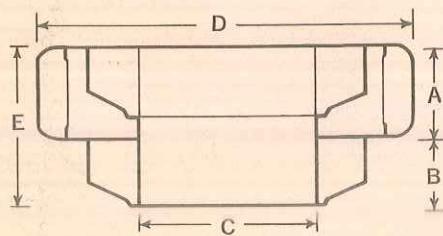
Scale: 1/2" to 1'



Colored lines indicate position of hopper with printer attachment



REVERSE TUCK



STRAIGHT TUCK

TUCK-O-MAT 50

CARTON DIMENSIONS	Standard Carton Range	A	B	C	D	E
REVERSE TUCK	Minimum	7/8"	3/8"	1 1/4"	—	—
	Maximum	5"	3 1/2"	12"	17"	—
STRAIGHT TUCK	Minimum	7/8"	3/8"	2 1/2"	(Dependent on carton proportions) ←	
	Maximum	5"	3 1/2"	10"		
PRINTER and DEBOSSER	Minimum	—	—	—	2 3/4"	1 1/4"
	Maximum	—	—	—	10"	7 1/2"

Extended carton ranges available on factory approval.

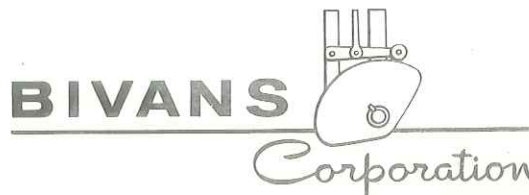
MACHINE DIMENSIONS	Deck height	Length	Width	PRINTER ATTACHMENT	
	36"	41"	23"		
Drive motor	1/3 hp, 60 cycle, 115 volts			Power: parent machine	
Shipping weight	475 lbs.			Shipping weight	104 lbs.
Net weight	305 lbs.			Net weight	45 lbs.
Operating speed	30-75 cartons per min. Note →			30-60 cartons per. min.	

Distributor:
NEW JERSEY MACHINE CORP.

Offices:
HOBOKEN
Boston
Atlanta

CHICAGO
Cincinnati
Dallas

LOS ANGELES
San Francisco



2431 DALLAS STREET, LOS ANGELES, CALIFORNIA 90031