



CCW-Z-216B

16-Head Multi-Purpose Weigher

An Ultra High-Speed Multi-Purpose Weigher For Simultaneous Weighing of Two Different Products

The CCW-Z-216B features a double weigher system that yields the performance of two weigher units - all consolidated in one system! This high performance double weigher can deliver a production speed of 180 WPM!

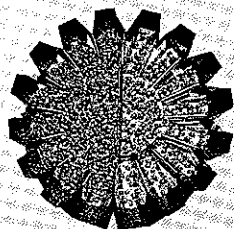
Flexibility is another feature of the CCW-Z-216B. It can be arranged in four different weighing configurations, all providing the same high level of production.

- Double weighing of the same product for two different target weights.
- Weighing of two different products for a two-product mix.
- Weighing of three different products for a three-product mix.
- Weighing of four different products for a four-product mix.

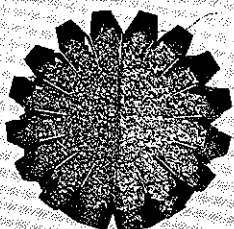
ISHIDA

Flexible production configuration

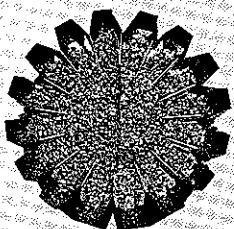
The CCW-Z-216B can be configured to meet all of your weighing requirements:



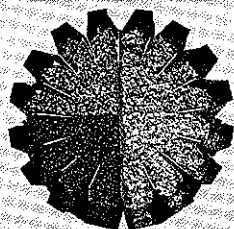
Double weighing- same product, different target weights



Three-product mix weighing



Two-product mix weighing: different products



Four-product mix weighing

SPECIFICATIONS

Model	CCW-Z-216B-D/20		CCW-Z-216B-D/30	
Weighing Capacity	500 g	1,000 g	500 g	1,000 g
Weighing Range	14 g to 500 g	25 g to 1,000 g	14 g to 500 g	25 g to 1,000 g
Accuracy for Single Product (*)	X < 1.0 g (max)	X < 2.0 g (max)	X < 1.0 g (max)	X < 2.0 g (max)
Maximum Volume for Weighing	3,000 cc (per single dump)		4,500 cc (per single dump)	
Weighing Speed (**)	up to 180 W.P.M.		up to 160 W.P.M.	
Controller	16 Bit Microprocessor			
Weigh Cell	Double-beam strain gauge load cell			
Target Weight Setting	Digital entry via numerical keypad			
	(Minimum Graduation)		(Minimum Graduation)	
	0.1 g	0.2 g	0.1 g	0.2 g
Weight Display	Plasma			
Material	Product contact surfaces are made of stainless steel or other sanitary materials.			
Options	Various options are available. Please contact Ishida distributors.			

NOTE: Specifications subject to change without notice.

(*) : Depends on the target weight, weighing speed and conditions.

(**) : Depends on the shape of the product, product density, target weight, etc.

The CCW-Z-216B weigher is protected by one or more of the following patents:

U.S.A.

3939928 4396078 4398612 4444283 4446937 4454924 4465149
 4467880 4475608 4478300 4491189 4497385 4499962 4512427
 4520884 4527647 4529049 4533006 4535857 4553616 4560015
 4574897 4585081 4609058 4615403 4620178 4625817 4627012
 4645020 4661920 4664200 4666002 4677422 4694920 4702394
 4705125 4705126 4708215 4722406 4727947 4733363 4790398
 4811256

Great Britain

2074329 2085172 2095934 2097207 2102582 2150309

West Germany

2340832 3111811 3152246 3152282 3153264 3152510

France

2479461

Italy

1148518

Israel

66041

Australia

523588 523958 534081 534879 540729 541709 543230
 543353 543793 544128 544727 545140 549371 549660
 550167 551518 552340 552867 553096 554437 554610
 563220 564805 564846 564856 565048 565234 565409
 565443 571762

Japan

1057592 1153378 1194134 1223752 1223760 1240515 1240516
 1251500 1377486 1377496

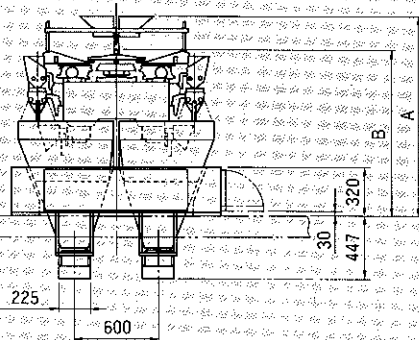
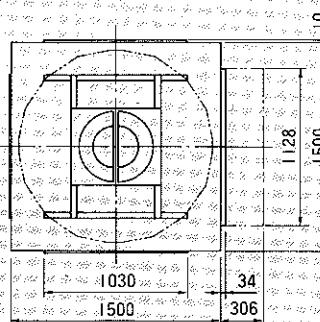
Europe*

60633 *64554 70647 72707 74260 74261 74813
 76167 160512

NOTE: *Patent number 64554 has been registered in Great Britain, West Germany, France, Netherlands, Sweden, Switzerland, Austria, Luxembourg and Liechtenstein. Other numbers have been registered in Great Britain, West Germany, France and Italy.

Dimensions

Unit: mm



A: D/20 = 1450
 D/30 = 1645
 B: D/20 = 1190
 D/30 = 1385