

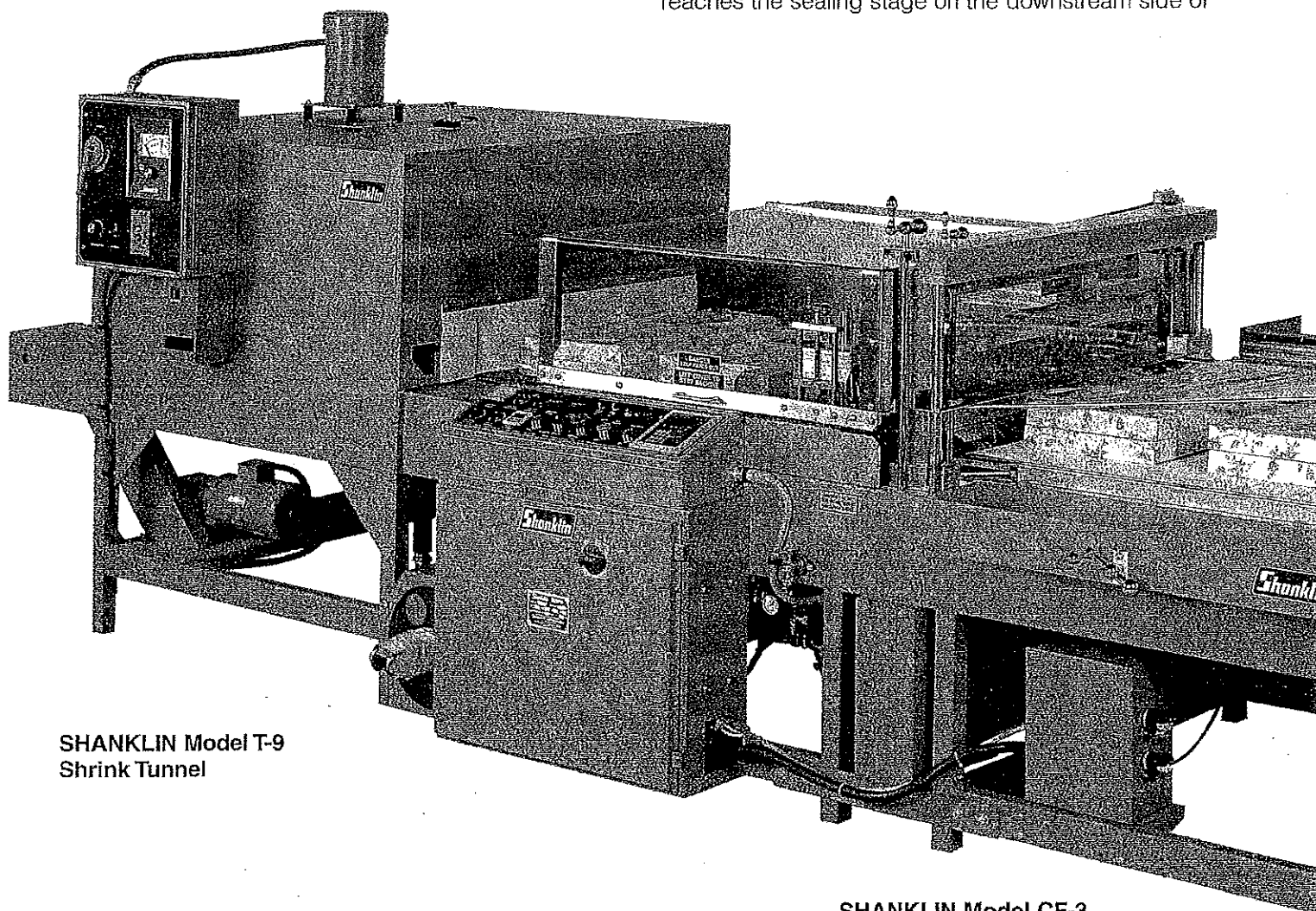
Shanklin Models CF-1, CF-3 and CF-5 Compact Wrappers

Introduction

The SHANKLIN Model CF-1 is an ultra compact Form-Fill-Seal machine which combines the benefits of the automatic package length adjustment and economical selvage trim of a Form-Fill-Seal machine with the compact size and versatility of an automatic L-Sealer. The SHANKLIN Models CF-3 and CF-5 are essentially the same as the CF-1 except that they have larger product size capacity.* The Model CF-1 accepts randomly fed product and advances it automatically through the machine. Simultaneously, the wrapping film is pulled into the machine by the belts of the side sealer, thereby making it possible to wrap flexible product. Use of a sheer-faced side sealer permits the machine to run with economically narrow selvage. Wrapping speeds are in the popular 30 per minute range.

Description

Product enters the SHANKLIN CF Machines on an in-line infeed conveyor. Centerfolded film is fed from a powered film unwind mounted at the rear of the machine and passes over the adjustable film inverting head. This head turns the film inside out, leaving an opening into which product can be inserted. The infeed conveyor carries the product through the film inverting head where it is surrounded by the plastic wrapping film. As the product is conveyed into the sealing area, the side sealing mechanism, which is mounted just downstream of the transverse sealing jaws, commences its operation, drawing film through the machine at the same rate as the product advances. This permits light and delicate product to be fed through the machine without distorting the product. The side sealer makes a seal and trims the selvage off the film in a continuous manner as the film advances through the machine. Once the product reaches the sealing stage on the downstream side of



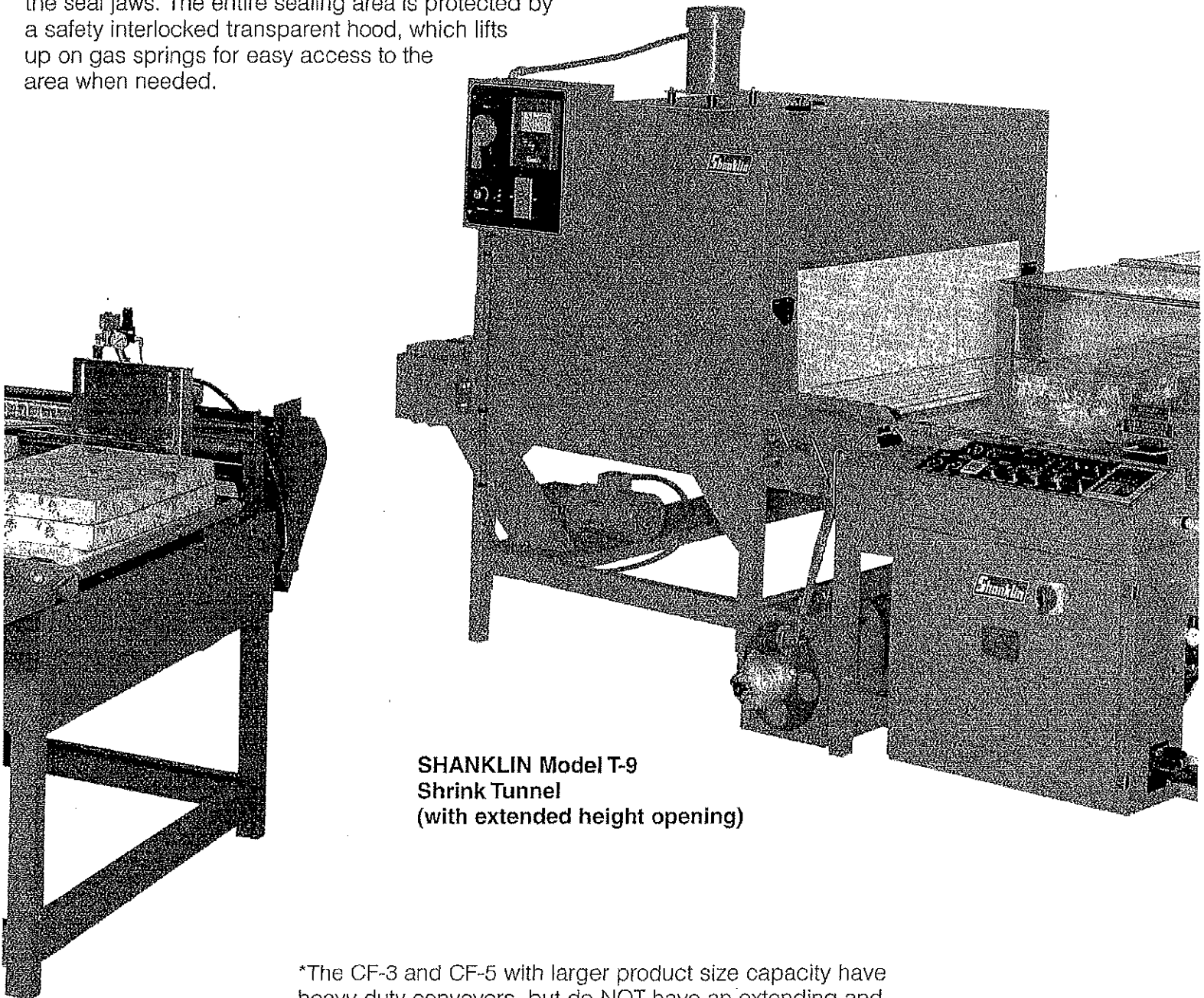
**SHANKLIN Model T-9
Shrink Tunnel**

**SHANKLIN Model CF-3
Form-Fill-Seal Wrapper**

the transverse seal jaws, the jaws close, making the seals and separating the package from the succeeding packages in the film. At this stage, the side seal has not been completed on that particular package, but it will be completed when the next product enters the machine and advances the product completely past the side sealer.

The infeed conveyor and discharge conveyor of the wrapping machines are mounted at the same elevation to ensure that product is carried smoothly through the machine. The infeed roller on the Model CF-1 discharge conveyor extends to close the gap between the infeed and discharge conveyors while product is being transported through the machine to ensure smooth transfer of products. The infeed roller retracts during the sealing cycle to provide space for the seal jaws. The entire sealing area is protected by a safety interlocked transparent hood, which lifts up on gas springs for easy access to the area when needed.

The CF Machines are ruggedly built machines which will handle a wide variety of product sizes. Since the machine uses a continuous side sealer, product length is not limited by the length of a sealing jaw, and long length product can be wrapped if it is supported by properly sequencing conveyors. The electrical controls which incorporate a programmable controller are easily accessible in the front mounted control panel. Start and stop controls are mounted on the infeed conveyor for instant accessibility to the operator. These compact FloWrap machines fit easily into almost any production line, and when teamed up with a SHANKLIN Shrink Tunnel, will produce attractive packages with maximum sales appeal.



**SHANKLIN Model T-9
Shrink Tunnel
(with extended height opening)**

*The CF-3 and CF-5 with larger product size capacity have heavy duty conveyors, but do NOT have an extending and retracting infeed roller on the discharge conveyor as standard. An extending nose discharge option is available for the CF-3 to handle a minimum package length of 5".

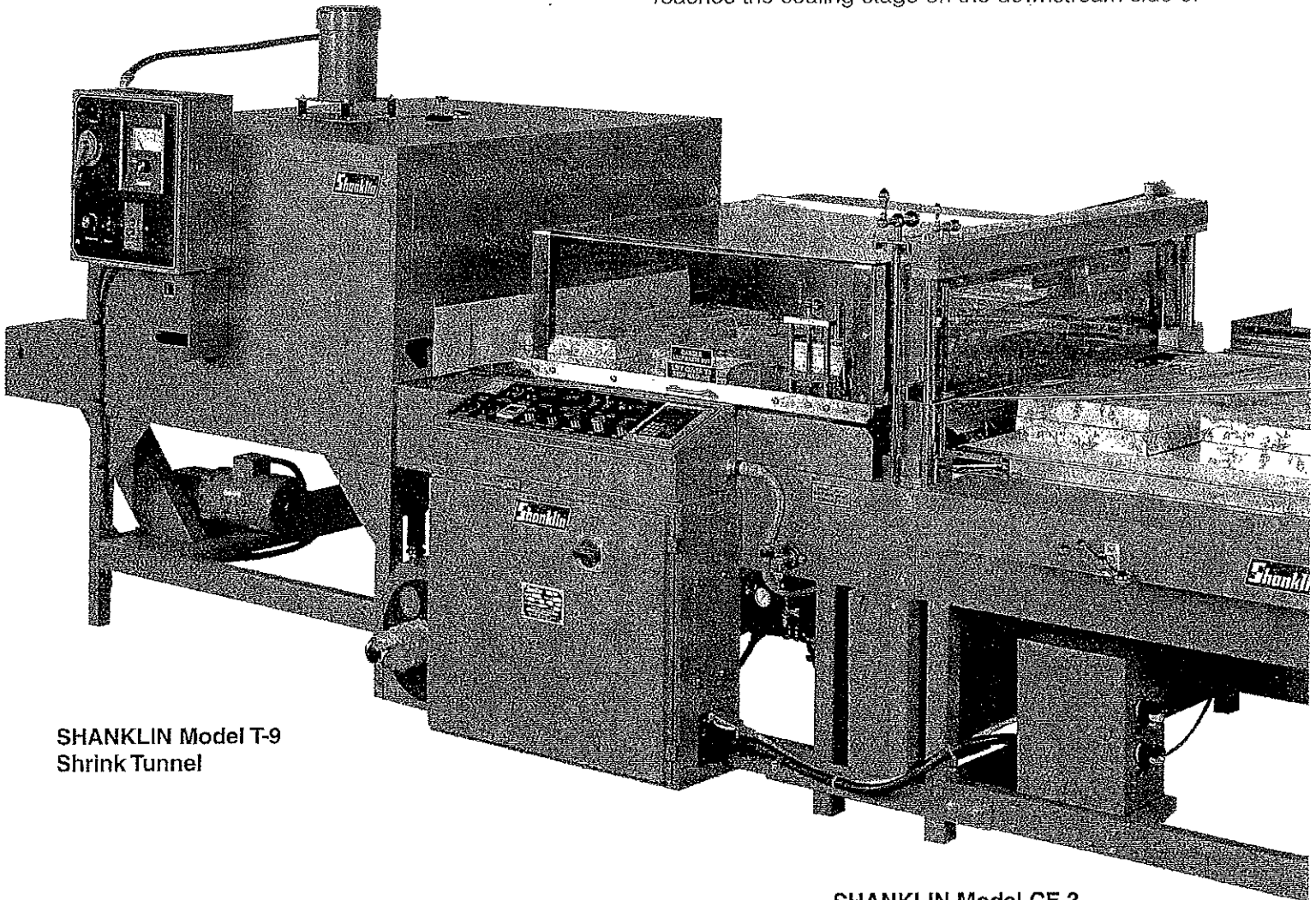
Shanklin Models CF-1, CF-3 and CF-5 Compact Wrappers

Introduction

The SHANKLIN Model CF-1 is an ultra compact Form-Fill-Seal machine which combines the benefits of the automatic package length adjustment and economical selvage trim of a Form-Fill-Seal machine with the compact size and versatility of an automatic L-Sealer. The SHANKLIN Models CF-3 and CF-5 are essentially the same as the CF-1 except that they have larger product size capacity.* The Model CF-1 accepts randomly fed product and advances it automatically through the machine. Simultaneously, the wrapping film is pulled into the machine by the belts of the side sealer, thereby making it possible to wrap flexible product. Use of a sheer-faced side sealer permits the machine to run with economically narrow selvage. Wrapping speeds are in the popular 30 per minute range.

Description

Product enters the SHANKLIN CF Machines on an in-line infeed conveyor. Centerfolded film is fed from a powered film unwind mounted at the rear of the machine and passes over the adjustable film inverting head. This head turns the film inside out, leaving an opening into which product can be inserted. The infeed conveyor carries the product through the film inverting head where it is surrounded by the plastic wrapping film. As the product is conveyed into the sealing area, the side sealing mechanism, which is mounted just downstream of the transverse sealing jaws, commences its operation, drawing film through the machine at the same rate as the product advances. This permits light and delicate product to be fed through the machine without distorting the product. The side sealer makes a seal and trims the selvage off the film in a continuous manner as the film advances through the machine. Once the product reaches the sealing stage on the downstream side of



**SHANKLIN Model T-9
Shrink Tunnel**

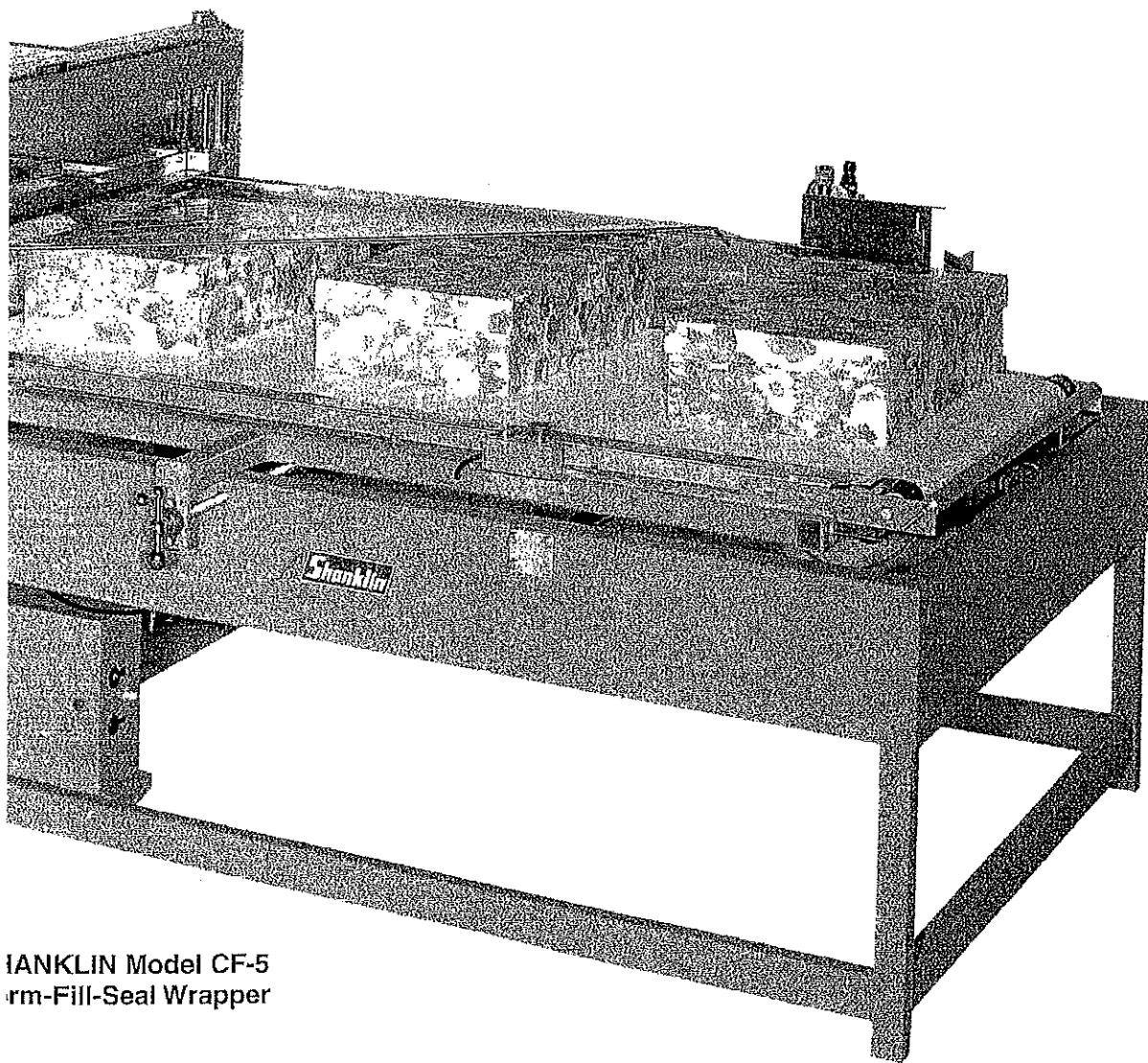
**SHANKLIN Model CF-3
Form-Fill-Seal Wrapper**

Operation

Product is fed into the machine through a film inverting head by the infeed conveyor. As the product advances through the head, it is wrapped in plastic film. As the product passes through the transverse sealing jaws, it interrupts an electric eye which starts the discharge conveyor and the side sealer so that product and film are advanced at the same rate simultaneously. Once the product is correctly located on the downstream side of the transverse sealing jaws, the discharge conveyor stops, the infeed roller on the discharge conveyor retracts (CF-1 only) out of the area of the transverse seal, and the sealing jaws make the seal. The infeed conveyor will continue to run until the next product is in position to enter the seal jaws. After completing the seal, the transverse jaws open, and with the introduction of the succeeding product, the product is transported the rest of the way through the side sealer and is conveyed away, usually to a shrink tunnel. Meanwhile, the infeed roller has extended to receive the next product.

Changeover

The SHANKLIN Models CF-1, CF-3, and CF-5 have been built to incorporate easy changeover procedures. To change width, the infeed conveyor and inverting head are adjusted to proper position by turning a crank. The discharge conveyor and side sealer assembly are then located, if required, by a hand crank adjustment. The heights of the film inverting head and the side sealer can be easily adjusted with hand cranks to match the height of the product to be run. The height of the transverse seal jaws is also adjusted by means of a hand crank. There is no adjustment needed for changing product length since this is accommodated automatically with the electric eye mechanism. When changing product height or width, it may be necessary to install new film as well. Once the new film has been fed through the machine, the next product is ready to run.



SHANKLIN Model CF-5
Form-Fill-Seal Wrapper

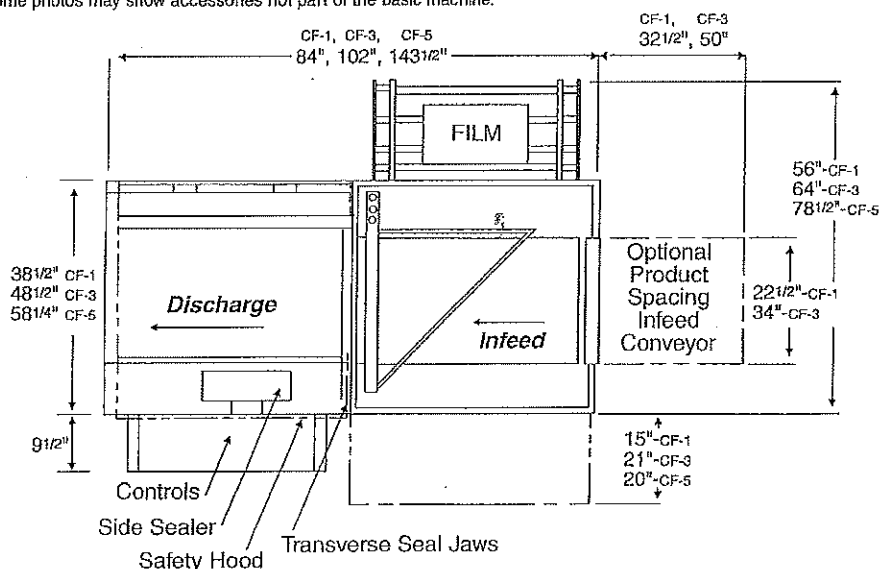
Specifications

	Model CF-1	Model CF-3	Model CF-5
Package Size*	2"W x 1/16"H x 3"L Min. to 20"W x 10"H x 120"L Max. *Width + Height Combination Cannot Exceed 22 1/2"	11"W x 1/16"H x 7 1/2"L Min. to 30"W x 10"H x 120"L Max. *Width + Height Combination Cannot Exceed 32 1/2"	14"W x 1/16"H x 7 1/2"L Min. to 40"W x 11"H x 120"L Max. *Width + Height Combination Cannot Exceed 42 1/2"
	(Product Longer Than 36" Requires Special Infeed and Discharge Conveyors.)		
Max. Film Size	To 26" Folded or 44" Flat** **Centerfolder Accessory Required	To 36" Folded	To 44" Folded
Discharge Conveyor	Extending Infeed Roller	Heavy Duty with Fixed Infeed Roller	Heavy Duty with Fixed Infeed Roller
Conveyor Height	Adjustable from 31 1/2" to 37 1/2"		
Packaging Speeds	Adjustable up to 30 Packages/Min. Depending Upon Product Type and Size		
Power	220V, 20 Amps, 60 Hz Single Phase (U.L. Listed Control Panel)		
Compressed Air	0.5 C.F.M. Free Air at 60 P.S.I.		
Trim Removal	Selvage Winder or Vacuum System		
Adjustments and Controls	<ul style="list-style-type: none"> • Programmable Controller • Single Crank Adjustment for Transverse Seal Jaw Height • Crank Adjustment for Side Seal Height • Adjustable Inverting Head Height • Crank Adjustment for Infeed Conveyor and Inverting Head Alignment • Crank Adjustment for Discharge Conveyor and Side Seal Alignment • Variable Speed Conveyor Controls • Sealing Jaw Temperature • Side Sealer Heat • Sealing Jaw Speed and Dwell Time • All Guides and Stops Fully Adjustable • Manual/Automatic Selector and Film Advance Button for Machine Setup • Reversing Switch on Film Inwind • Hole Punch Placement (Single or Double) • Package Counter 		
Safety Devices	<ul style="list-style-type: none"> • A Transparent Hood Interlocked with the Automatic Sequencing Circuit Covers the Sealing Area • Film Clamp Safety for Cross Seal Jaws • "Stop" Button Instantly Stops All Machine Functions Until Manually Reset 		
Accessories	<ul style="list-style-type: none"> • Compact Film Centerfolder • Infeed Conveyor For Product Spacing • Conveyors for Long Product • Product Pressure Rollers Over the Discharge Conveyor • Hot Knife Seals Jaws Standard; "Cool Cut" Seal Jaws Available • Static Eliminator • Casters • Consult Factory for Other Accessories 		

U.S. Patent Nos. 30,101, 5,131,213, 5,321,290, 5,597,499 and pending.

Specifications on all machines subject to change without notice. Some photos may show accessories not part of the basic machine.

Models CF-1, CF-3, CF-5



SHANKLIN CORPORATION

100 Westford Rd., Ayer, Mass. 01432

Tel.: (978) 772-3200 Fax: (978) 772-5660

www.shanklincorp.com



Printed in U.S.A.

©Shanklin Corporation, 1998

5