

# **PDC SHRINKSEALER MODEL 75**

---

## **TAMPER EVIDENT BANDING & SLEEVE LABELING MACHINERY**



**PDC** INTERNATIONAL  
CORPORATION



1 Hermann Court, Norwalk, Connecticut 06855 USA Tel. (203) 853-1516

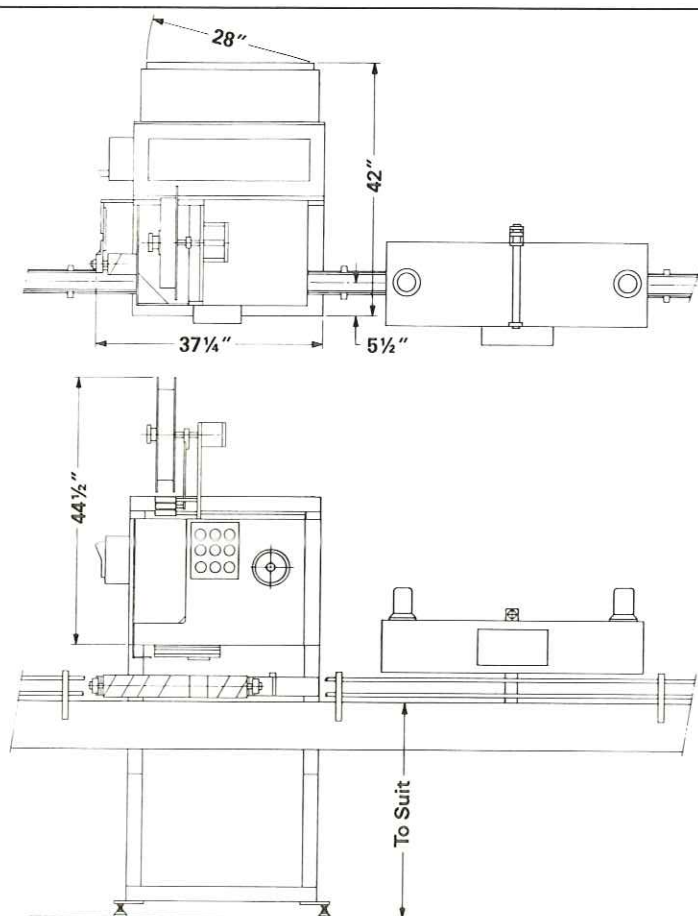
## PDC SHRINKSEALER MODEL 75

The Model 75 applies heat shrinkable tamper evident bands and sleeve labels at rates of up to 400 per minute. The maximum rate of application is dependent upon the ratio of band height to band diameter, the resiliency of the material and the configuration of the container. The minimum band height and the maximum band diameter also depend upon the resiliency of the material. The machines are fully mechanical and do not employ suction cups.

Special modifications of the basic design are available for unique applications. "C" designation in the model number indicates a continuous motion machine in which the containers do not stop to receive the bands.

PDC machinery is **designed and built in the USA** under U.S. Patent No. 3924387.

MODEL	BAND DIAMETER	BAND HEIGHT	BAND CUT OFF	SPEED (pm)
75 - M	3/8" - 3"	3/4" - 2"	Unregistered	300
75 - M2	3/8" - 3"	3/4" - 4"	Unregistered	300
75 - E	3/8" - 3"	3/4" - 6"	Unregistered	250
75 - ER	3/8" - 3"	3/4" - 6"	Registered	300
75 - ERL	3/8" - 3"	3/4" - 7"	Registered	225
75C - M	3/8" - 3"	3/4" - 2"	Unregistered	400
75C - M2	3/8" - 3"	3/4" - 4"	Unregistered	400
75C - ER	3/8" - 3"	3/4" - 6"	Registered	400



### OPTIONAL EQUIPMENT:

Perforators  
Tear Tab Cutters  
Stainless Steel Conveyors  
Hot Stamp Imprinters  
Casters and Jacks  
Splashproof Covers  
Shrink Tunnels

