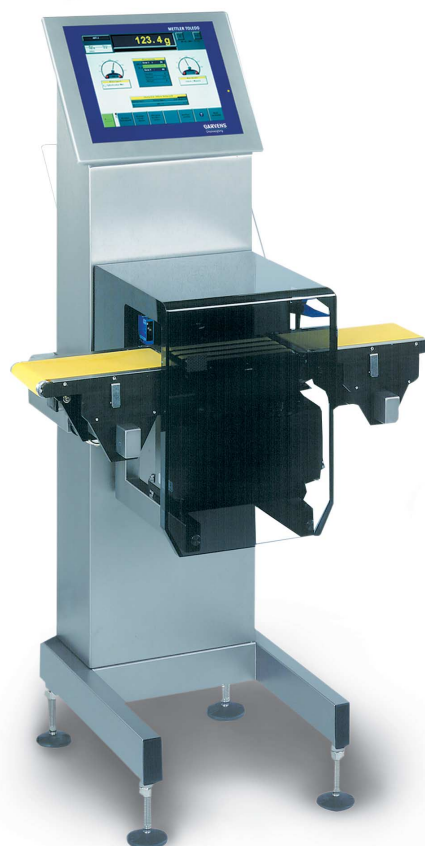


## The perfect solution



### **Colour touchscreen**

Large 12.1" display for best visibility and easy operation

### **Being a versatile checkweigher the S2 for weights up to 600 g meets even higher demands.**

The advantages are many: easy-to-use touch screen for clear operator guidance, continuously variable belt conveyor speed with constant maximum torque, direction of transport and line height to be selected on site, and a weighing terminal that can be tilted for optimum visibility.

## S2

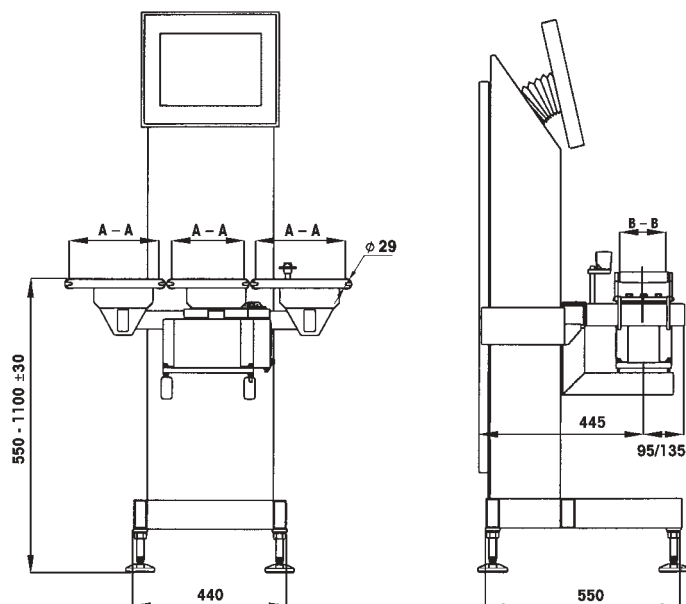
– the new standard

Checkweighers of the S2 series are the result of continuing development in the field of dynamic weighing technology. Proven quality, new approaches to operation and flexible, modular design are the basic assets of this state-of-the-art weighing system.

The standard design includes a height adjustment facility, reversible direction of transport and continuous belt speed control.

The modular concept of the S2 allows for ease of servicing and ensures that it can easily be extended by further options.

The S2 is suitable for weighing products up to 600 g, allowing for the best adaptation of the technical parameters of dynamic weighing to customers' requirements.



Schematic S2 – typical dimensions in mm  
(A-A, B-B vary depending on conveyor size)

\* depending on the width of the conveyor used

### Characteristics

- "Weights and Measures" design-approved in certain countries
- weight classification up to 7 zones
- manual or automatic re-zero
- various user-selectable program languages
- 100 article memory locations
- electrical ratings: 115/230 V (AC), 50/60 Hz, single-phase, 500 VA
- suitable for integration in almost any production line
- access protection by password

### Weighing terminal

- touch screen colour display, TFT 12.1", resolution 800 x 600 pixel (SVGA)
- operator-friendly: TachoControl, operator prompts (menus)
- indication of all current important weighing and production data as well as configuration screens

### Options and accessories

- automatic feedback to filling controllers
- statistics programs for evaluation
- various monitoring facilities (e. g. detection of product backup)
- various interfaces (e. g. for weight data transmission)
- various infeed conveyors and infeed units
- various outfeed conveyors and rejecting devices
- acrylic draught cover
- catch bins for rejects
- PrintCard or printer
- metal detection input
- further special options and accessories on enquiry

\* depending on the design and dimensions of the weighing belt used

\*\* within the approved tolerances, depending on the weight, dimensions and transport behaviour of the product being weighed

### Technical details

Technical details	S2
Weighing range*	in the range 0 to 600 g, specific to article weight
Accuracy**	from $\pm 0.02$ g
Throughput (weighings/minute)**	max. 400
Roller centres, weighing conveyor (A-A)	200, 250 mm
Belt width, weighing conveyor (B-B)	100, 120, 150, 200 mm
Roller centres, infeed/outfeed conveyor (A-A)	250, 400, 600 mm
Belt width, infeed/outfeed conveyor (B-B)	100, 120, 150, 200 mm
Standard sorting/rejecting device	air jet



### Mettler-Toledo Garvens GmbH

Kampstrasse 7  
31180 Giesen, Germany  
Telephone +49 (0) 5121 933-0  
Facsimile +49 (0) 5121 933-456  
e-mail garvens@mt.com

Subject to technical modifications  
© Mettler-Toledo Garvens GmbH  
Printed in Germany 0407/44 UK

[www.mt.com/garvens](http://www.mt.com/garvens)

For more information