

### Overview

The INNOPOUCH Bartelt® IM horizontal form/fill/seal is a **servo driven** machine. Its simplicity of operation makes it the choice of many companies. The pre-programmed settings allow you to start the machine and forget about it. Additional servo upgrades can be added as enhancements.



### Pouch Styles

The following pouch styles can be created with change parts:

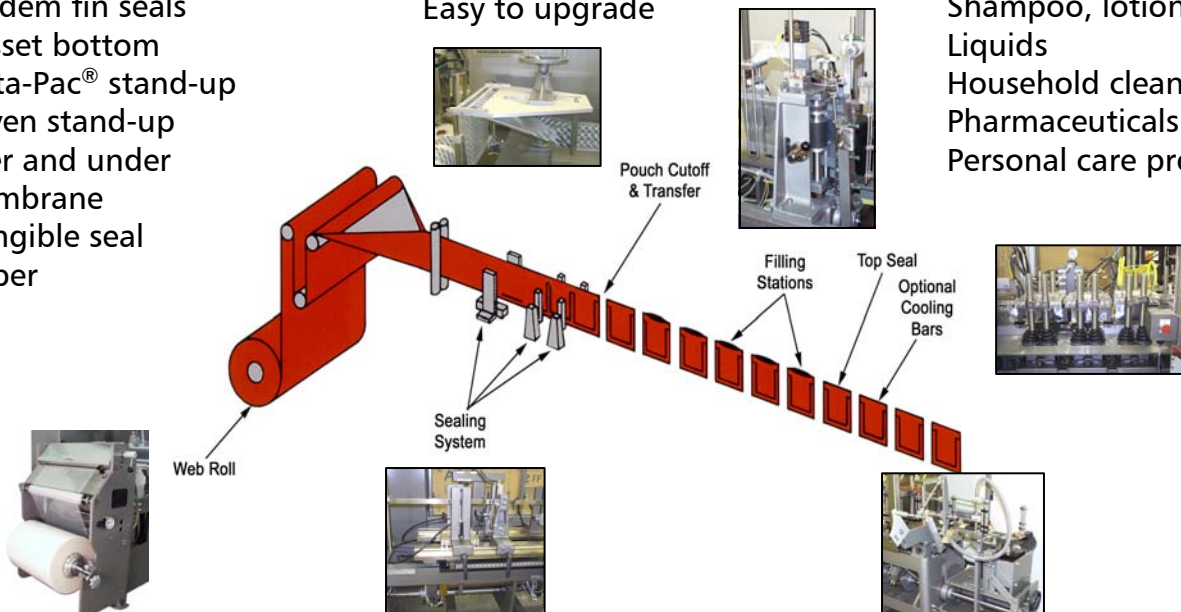
- 3-sided fin seal
- 4-sided fin seal
- Tandem fin seals
- Gusset bottom
- Delta-Pac® stand-up
- Doyen stand-up
- Over and under Membrane
- Frangible seal
- Zipper

### Benefits

- Low cost and easy to maintain
- Multiple fill capability
- Simplex or tandem configurations
- Proven reliability since 1949
- Simple operator controls
- Easy to upgrade

### Typical Products

- Flour and powders
- Dessert, soup and drink mixes
- Rice, beans and spices
- Noodles, pastas and sauces
- Towelettes, swabs and sponges
- Shampoo, lotions and other viscous Liquids
- Household cleaners
- Pharmaceuticals
- Personal care products



KHS USA, Inc.

5501 N. Washington Boulevard  
Sarasota, FL 34243  
Ph: 941-359-4000  
Fax: 941-359-4043  
Email: Rick.Manning@khs.com  
www.khs.com/us



Filling and Packaging – Worldwide

# INNOPOUCH BARTELT IM

Horizontal Form/Fill/Seal

INNOPOUCH  
POUCHING TECHNOLOGIES



## Base Machine

- Right hand configuration
- 3-side sealed pouches
- Servo main drive motor
- Tensioned web unwind with dancer system
- Adjustable web forming plow
- Photoelectric registration
- Mechanisms for side and top seals complete with seal bars
- Servo driven web feed roll and cutoff assembly
- One set of leading pouch clamps
- One fill station with vacuum openers
- Provisions for second fill station
- Provisions for optional top seal pre-heat or cooling bars
- Pouch discharge station with chute
- Cluster lubrication on front of machine
- Transparent, interlocked safety guarding
- Push button operator control console (Stop, Start & E-Stop)
- One set of equipment documentation

*Standard configuration is a 21" wide web with a 3" diameter core.*

*Maximum outside web roll diameter is 24" (610mm).*

*Printing tolerance for all registered film is:  $\pm 0.016$  per repeat and  $\pm 0.0312$  over 10 repeats as non-accumulative.*

**Power:** 460V, 60 Hz, 3-phase; others available

**Drive Motor:** Variable speed main drive

**Pouch Materials:** Most heat sealable film

**Control:** 24 VDC

**Air:** 5 cfm @ 60 psi

**Weight:** 4,800 Lb. (2,175 Kg)

**Base:** Heavy-duty industrial weldment

## Pouch Sizes

### Model IM 6-16

Width: 2" up to 4.75" (51mm to 120mm)

Height: 2" up to 9.5" (51mm to 241mm)

Rate: 120 cycles/min

### Model IM 7-14

Width: 2" up to 5.75" (51mm to 146mm)

Height: 2" up to 9.5" (51mm to 241mm)

Rate: 100 cycles/min

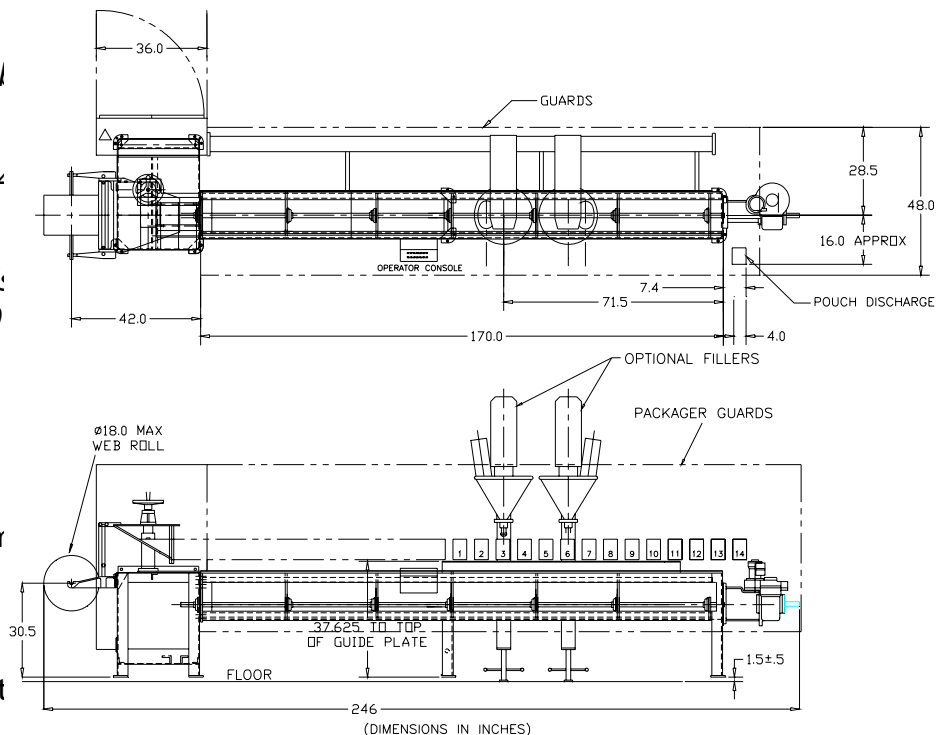
### Model IM 9-12

Width: 3" up to 7.75" (76 to 197mm)

Height: 2" up to 9.5" (51mm to 241mm)

Rate: 70 cycles/min

**Gusset Bottom:** 2" max. for 21" web width



KHS USA, Inc.

5501 N. Washington Boulevard

Sarasota, FL 34243

Ph: 941-359-4000

Fax: 941-359-4043

Email: Rick.Manning@khs.com

www.khs.com/us



Filling and Packaging – Worldwide