



Elmar®
global filler technology

simple...rugged...versatile...

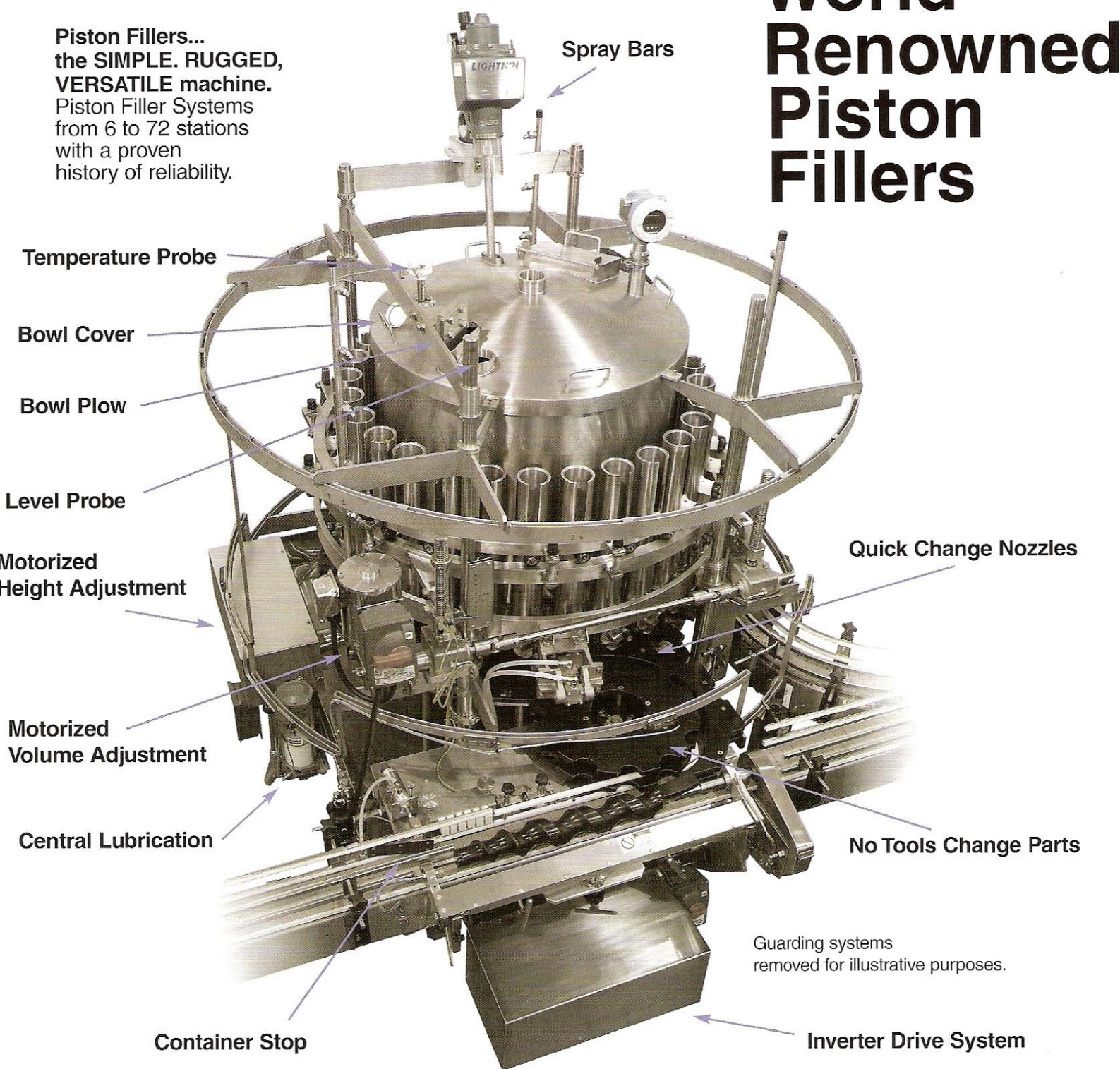


Elmar® Worldwide Total Systems Approach

Large or Small, in Plastic, Glass, or Metal Containers. Some of the conventional products filled by Elmar Fillers: Aerosols, Antifreeze, Applesauce, Automotive Products, Baby Foods, Barbeque Sauces, Beans, Candy, Caulking Compounds, Cheese Spreads, Chili, Citrus Juice Concentrates, Coffee, Cosmetics, Cranberry Sauce, Creams, Cream Style Corn, Detergents, Herbicides, Infant Formula, Insecticides, Jams, Jellies, Juices, Kernel Corn, Ketchup, Latex, Lotions, Mayonnaise, Meat Paste, Meat Sauces, Medicines, Microwave Meals, Milk Products, Mushrooms, Mustard, Nuts, Oil Base Paints and Stains, Pasta Products, Paste Wax, Peanuts, Peanut Butter, Personal Care Products, Pet Foods (Chunky or Cereal), Petroleum Additives, Pharmaceutical Products, Pie Fillings, Potted Meats, Powders, Preserves, Ravioli, Salsas, Shampoos, Silicones, Solvents, Spaghetti, Spaghetti Sauces, Stews, Syrups, Tomato Paste and Tomato Products, Vegetable Oils, Windshield Washer Solvent.

Piston Fillers...
the **SIMPLE. RUGGED,**
VERSATILE machine.
Piston Filler Systems
from 6 to 72 stations
with a proven
history of reliability.

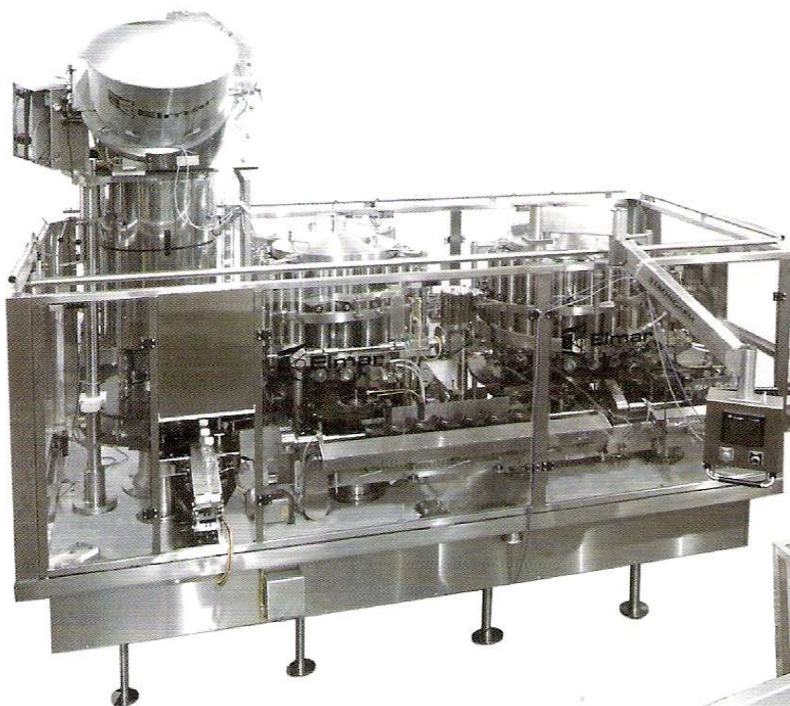
World Renowned Piston Fillers



OPERATIONAL DATA	RPE-07	RPE-14	RPE-21	RPE-28	RPE-35	RPE-36	RPE-54	RPE-54L	RPE-72	RPE-7G	RPE-14G	RPE-18G	RPE-27G	RPE-36G
Number of Stations	7	14	21	28	35	36	54	54	72	7	14	18	27	36
Container Sizes- Dia.	2"-41/4"	2"-41/4"	2"-41/4"	2"-41/4"	2"-31/2"	2"-41/4"	2"-31/2"	2"-41/4"	2"-31/2"	4"-7"	4"-7"	2"-7"	2"-41/4"	2"-41/4"
Max Fill-Fluid Ounces	67	67	67	67	27	67	27	67	27	160	180	160	32-170	32-170
Filler Bowl-Capacity-Gal.	25	25	41	88	88	150	250	250	300	25	80	208	230	250
Horsepower Required	11/2	11/2	2	3	3	3	5	5	71/2	11/2	3	3	5	5
Aprox. Floor Area-Sq. Ft.	21	21	25	30	30	45	50	65	125	21	30	45	65	140
Container Centers-Inches	12.56	6.28	5.25	5.132	4.110	5.235	4.000	4.667	4.000	12.56	10.265	10.470	9.335	8.000

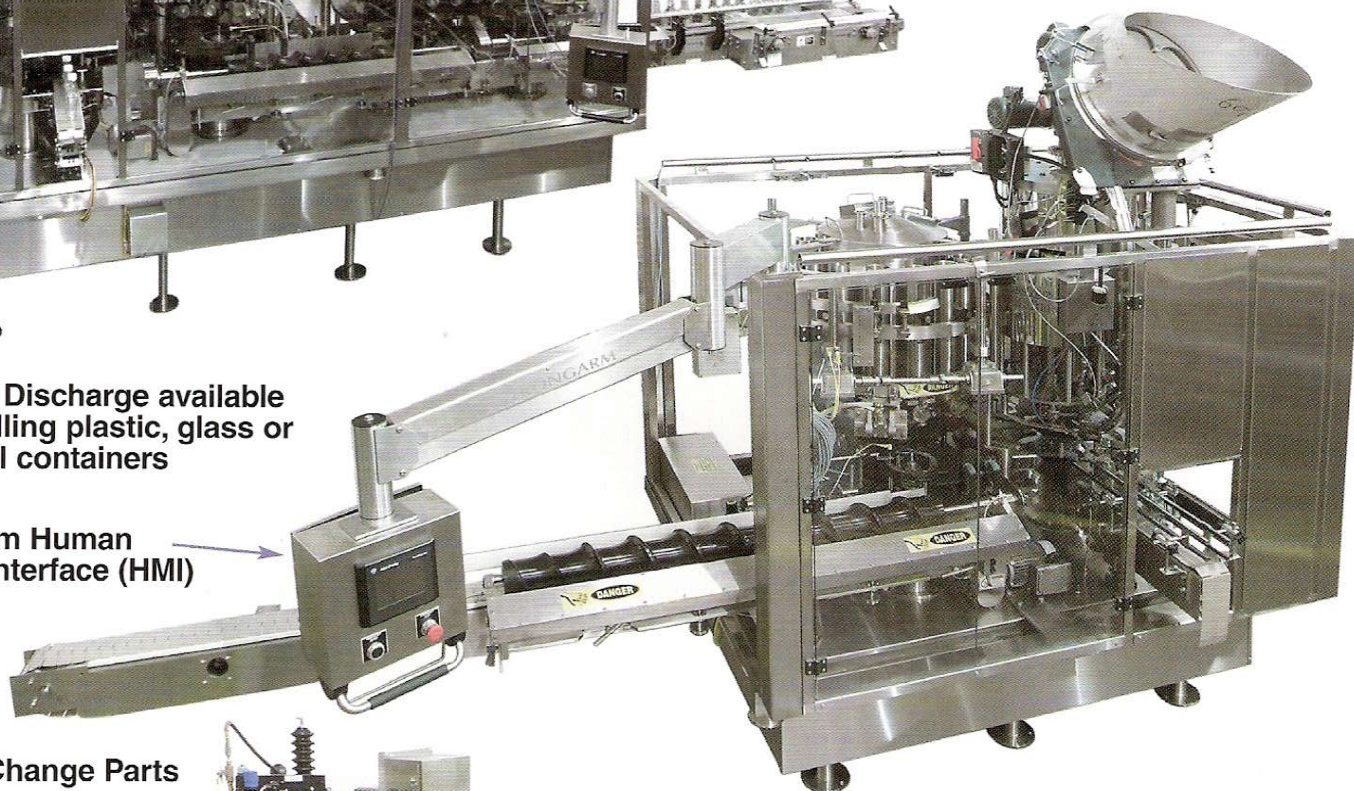
Bottom Fill available on selected models, consult factory - larger volume available.

Monoblock



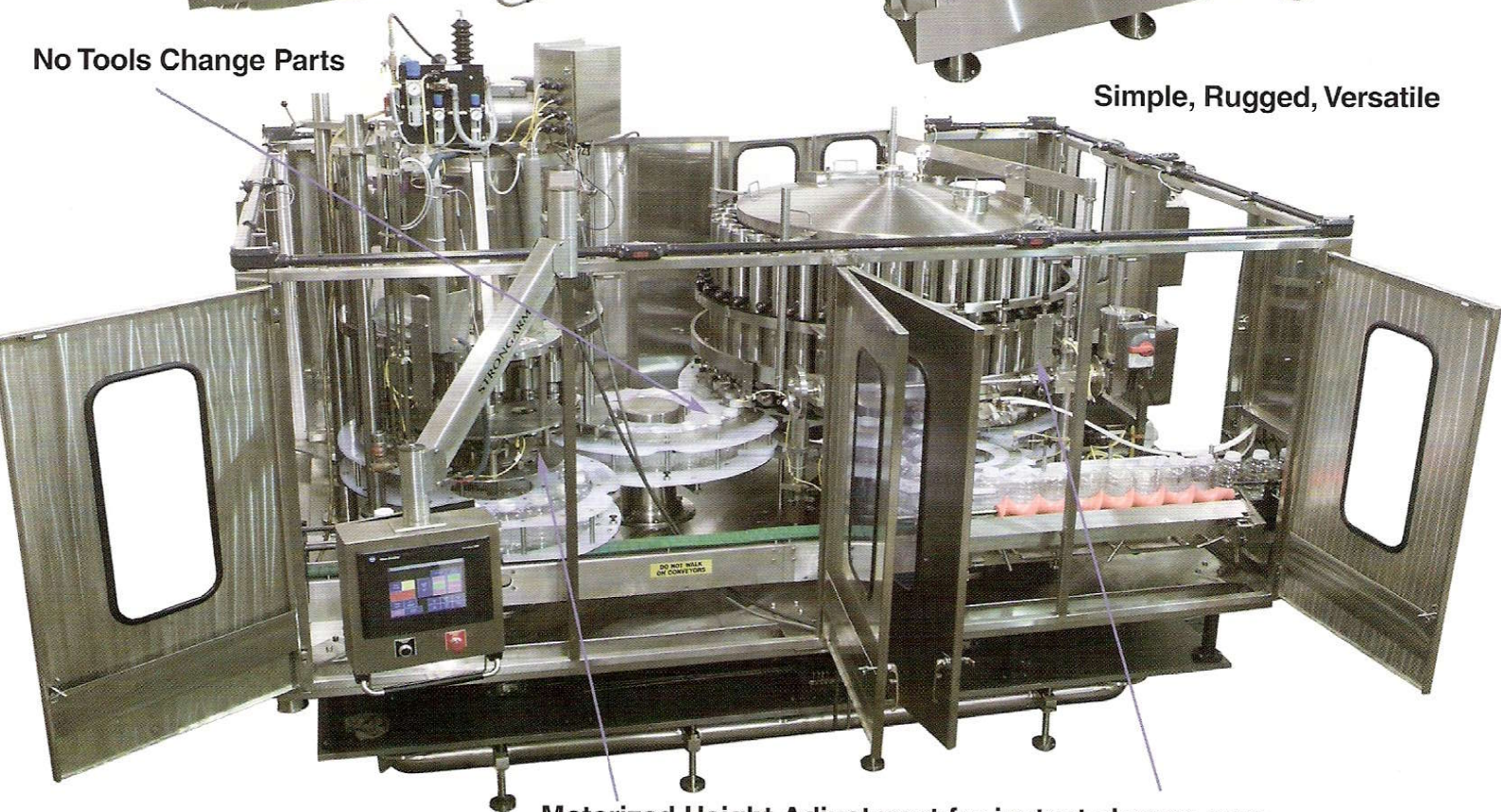
Dual Discharge available
for filling plastic, glass or
metal containers

Strong Arm Human
Machine Interface (HMI)



No Tools Change Parts

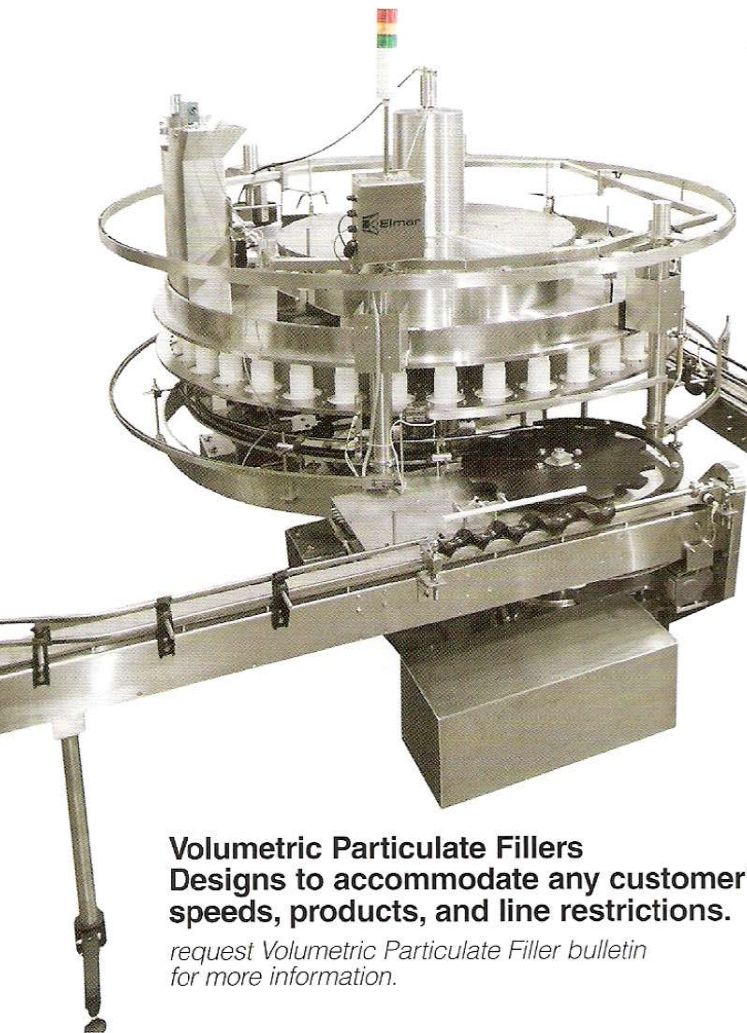
Simple, Rugged, Versatile



Motorized Height Adjustment for instant change over

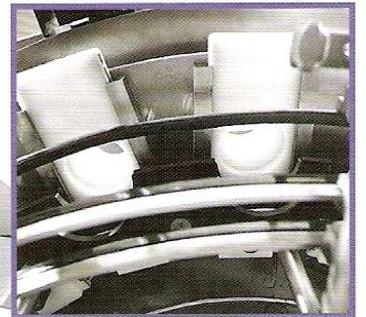
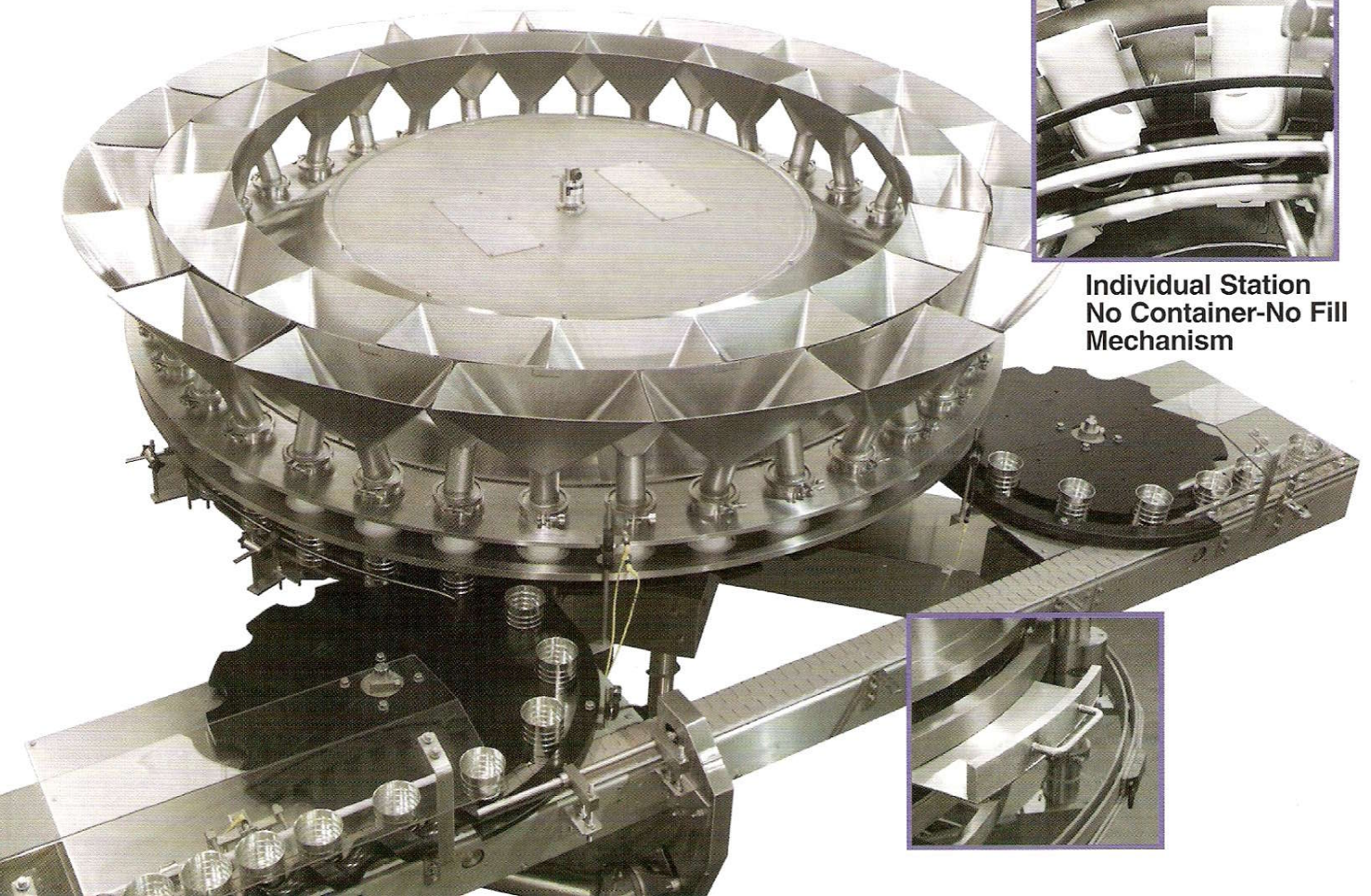
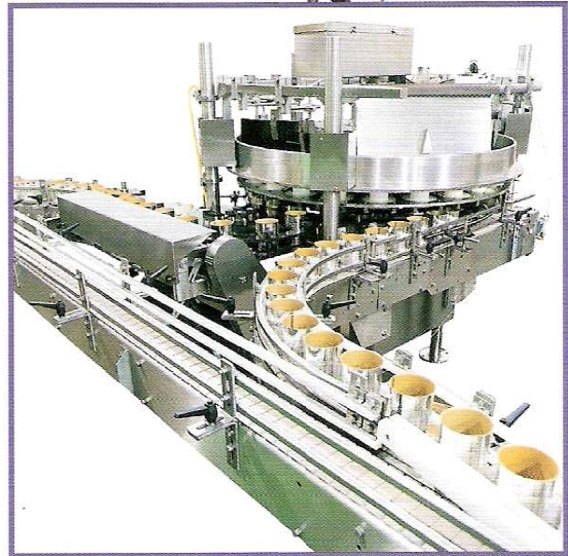
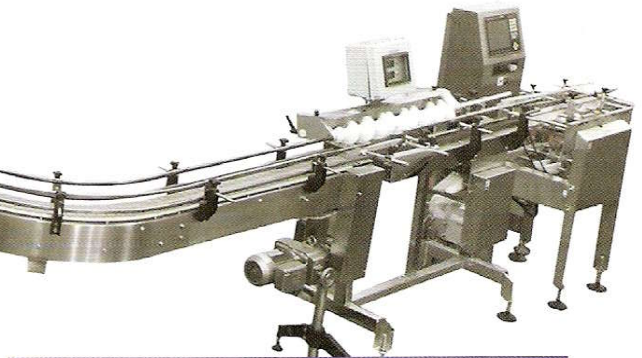
request monoblock bulletin

Volumetric Particulate Fillers



Volumetric Particulate Fillers
Designs to accommodate any customer's
speeds, products, and line restrictions.

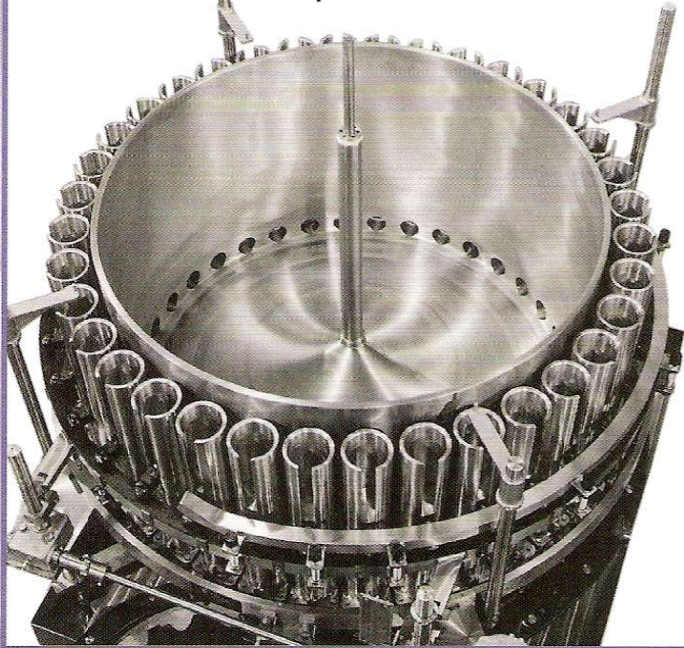
*request Volumetric Particulate Filler bulletin
for more information.*



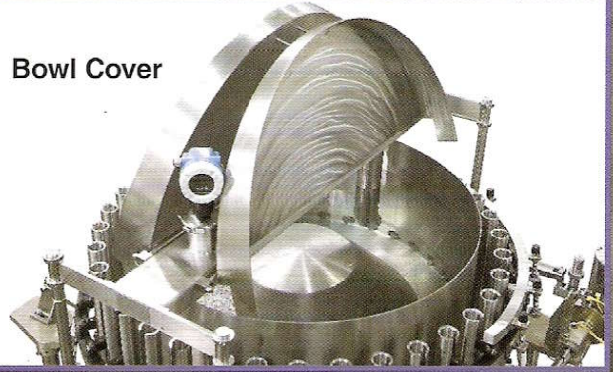
**Individual Station
No Container-No Fill
Mechanism**



Recirculating water jacketed bowl keeps product temperature constant.



Bowl Cover



Variable Speed Mixer/Agitator
Inverter Driven



Change Parts
Storage Systems

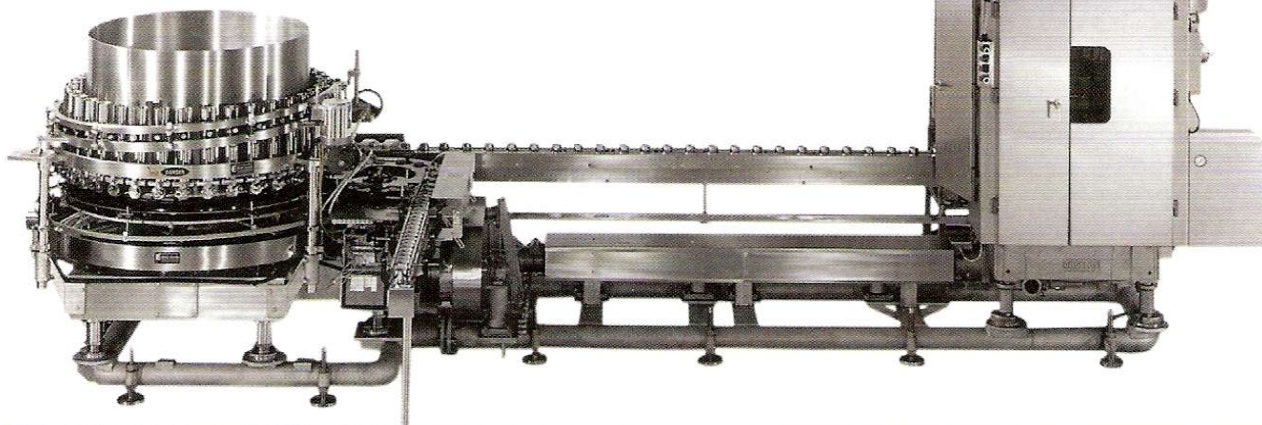


COP Tank



Guarding
Packages

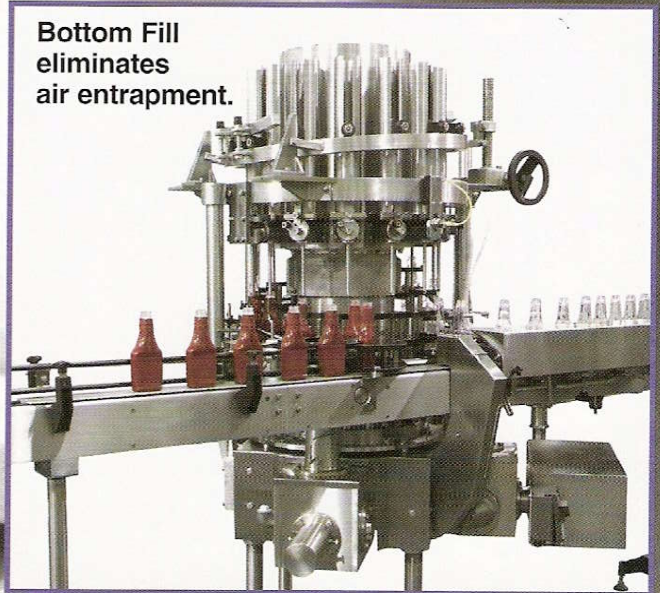
Custom Engineered... and Proven!
Filler Closer Systems for Standard Seamer Hook-Ups.
Elmar has done it all!





Bottom Fill

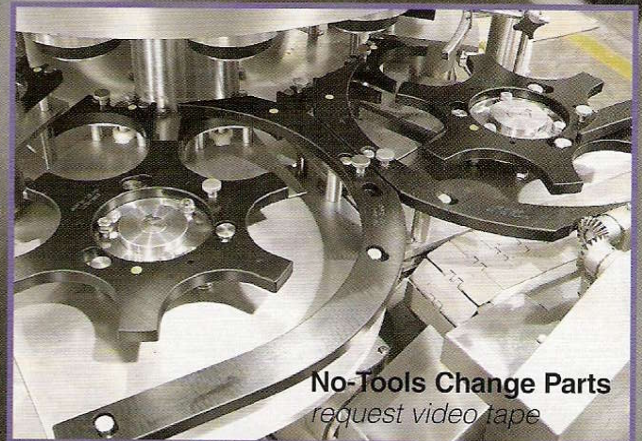
**Bottom Fill
eliminates
air entrapment.**



**3A Optional
Dairy Standards**

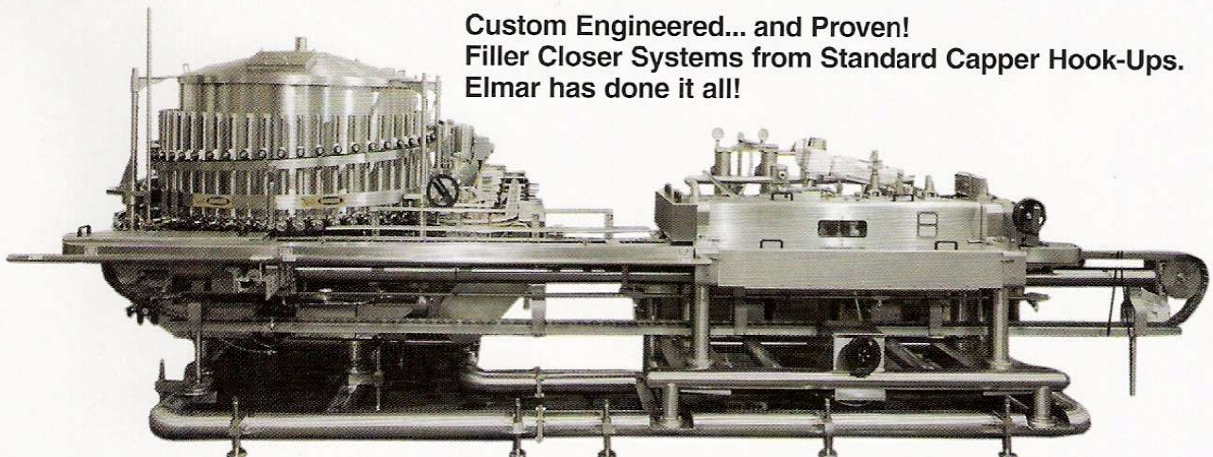


**Quick Change
Nozzles**



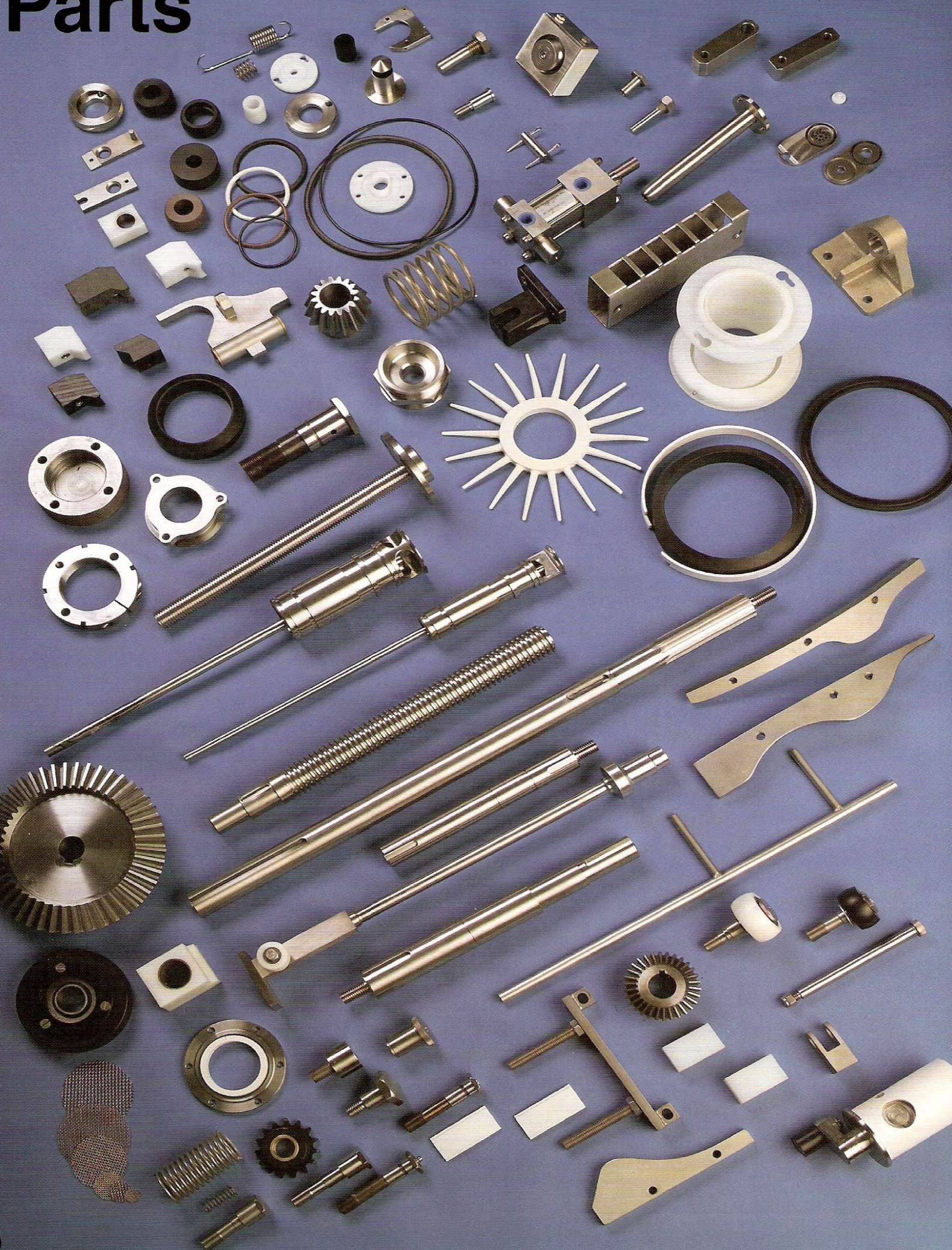
No-Tools Change Parts
request video tape

**Custom Engineered... and Proven!
Filler Closer Systems from Standard Copper Hook-Ups.
Elmar has done it all!**

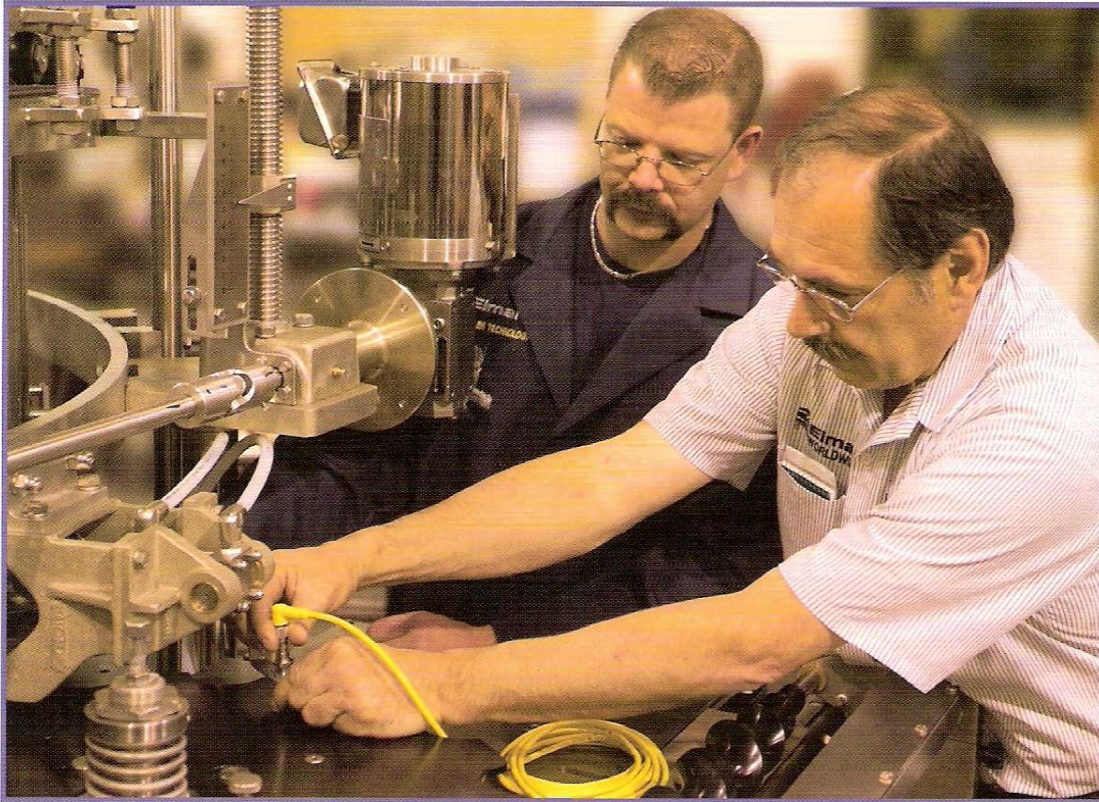


Stainless Steel Tubular Common Frame

Parts



Service



Elmar Technical Service personnel are strategically located to assist you with the installation and modification of our equipment anywhere in the World. Elmar offers training assistance, proper set up procedure, and maintenance of your equipment.

Product Testing at your facility or ours... One test is worth a thousand expert opinions.

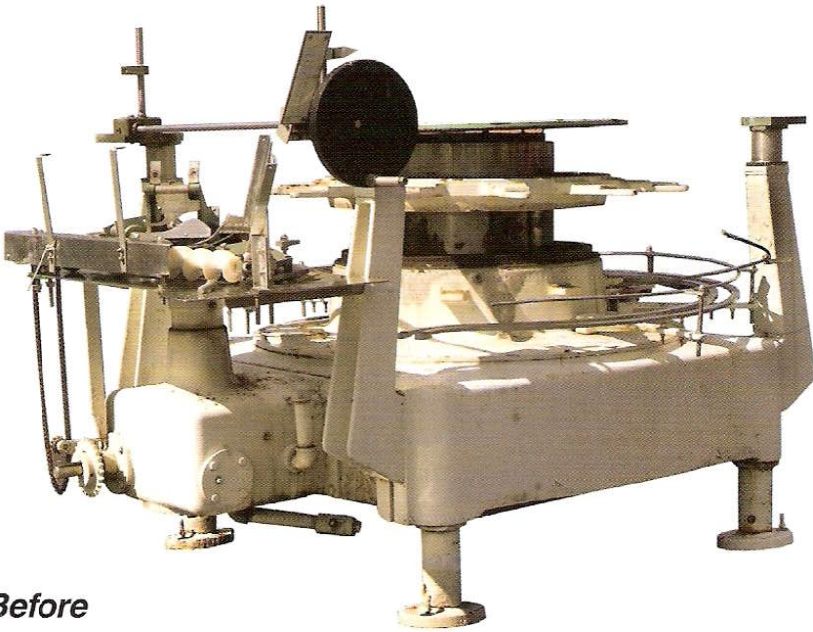


High speed portable video camera for analyzing fill characteristics

Additional Support

Elmar, in addition to being an innovative designer and manufacturer of high quality filling systems for the Food, Petro Chemical, Pharmaceutical and Cosmetics Industries, offers many additional services... remanufacturing, operation and maintenance seminars, electronic line control systems, and a complete test laboratory. Elmar technical support is available worldwide.

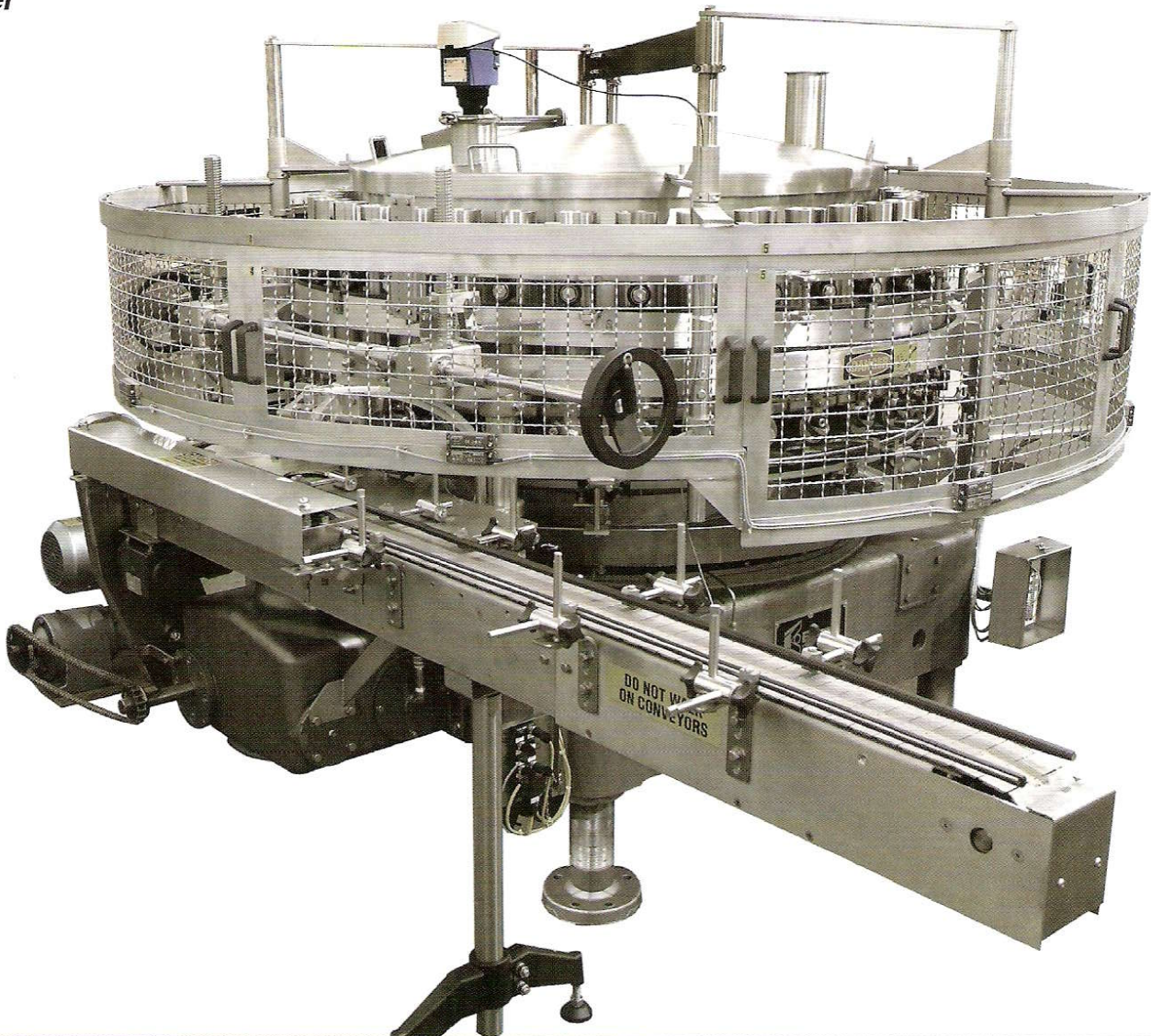
Remanufactured



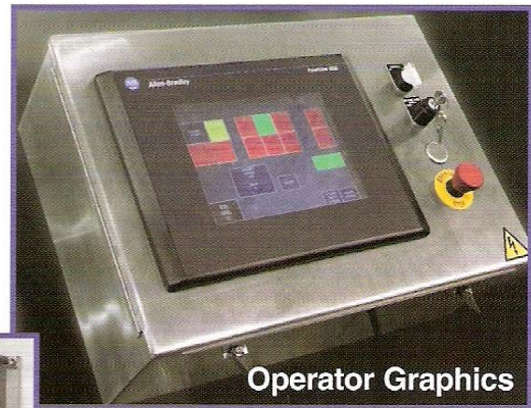
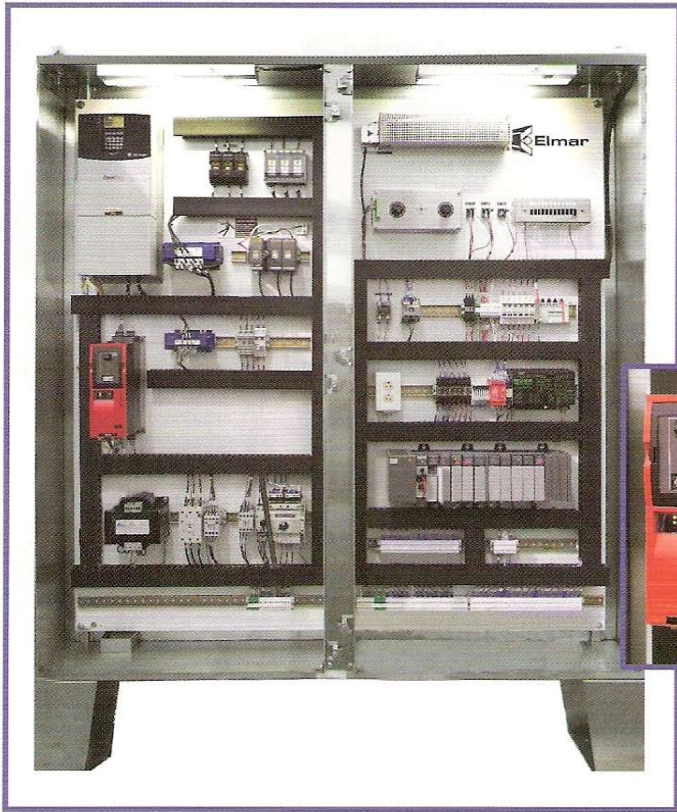
Before

36 Station Filler remanufactured to present day standards including a new machine warranty.

After

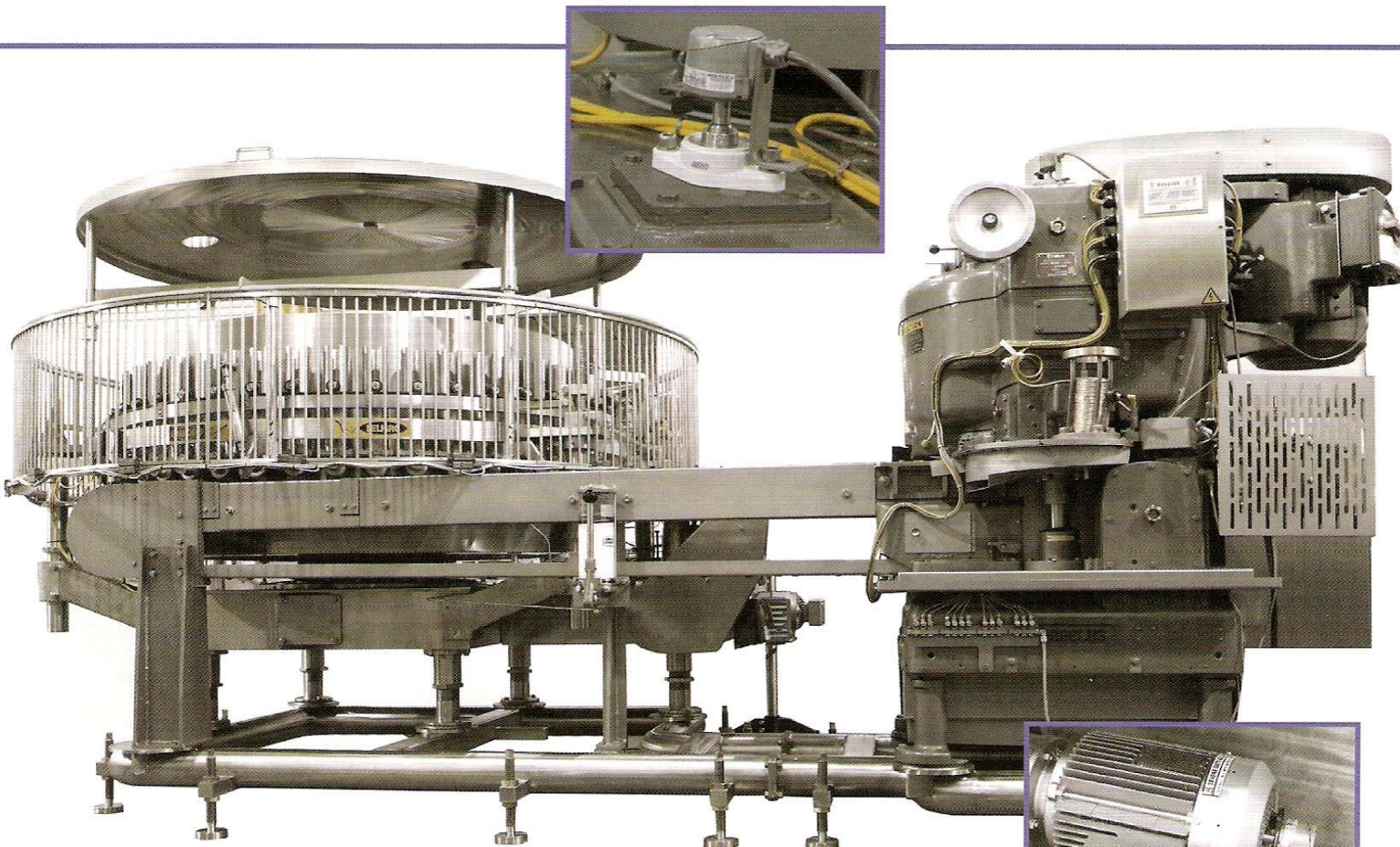


Electronics



Operator Graphics

As the world's leader in filling solutions, we are able to provide complete control packages to meet your specific needs: from simple low-speed "No Container-No Fill" (NCNF) controllers to complex high-speed line controls. This flexibility allows customers to choose from standard packages, which utilize well known industry proven components, to custom designed solutions that meets specific requirements.

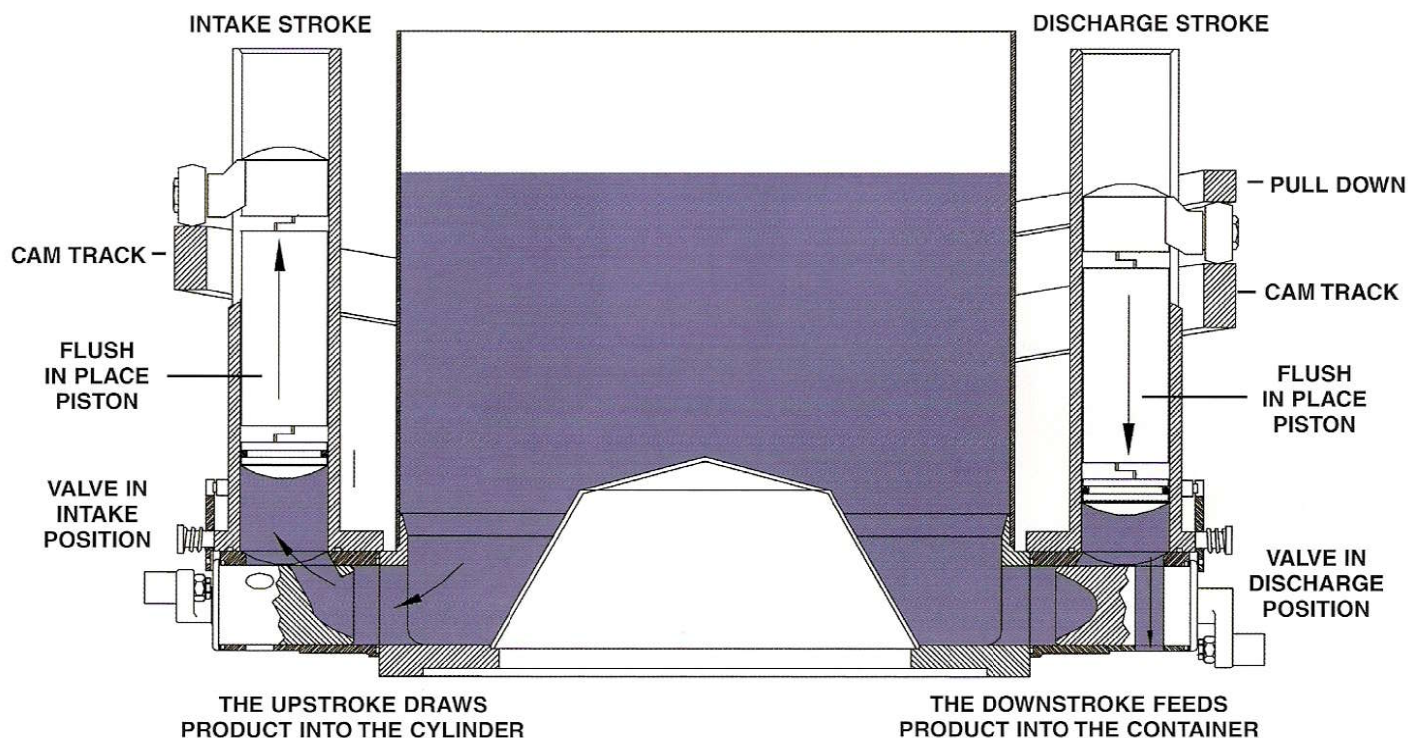


Filler, seamer, Capper Integration with Electric Synchronization



Filler Drive with Encoder

Rotary Valve Piston Filler



Action of the piston and valve are shown above. As the filler rotates, product is drawn through the intake passage in the valve, into the cylinder, by the upward motion of the piston being raised by the piston roller operating on the cam track. With a container present, the valve is rotated closing the intake port and opening the discharge port. The downward stroke of the piston forces the product through the discharge port into the container. At the completion of the stroke, a cam returns the valve to its original position closing the discharge port and opening the intake passage, then the process is repeated.

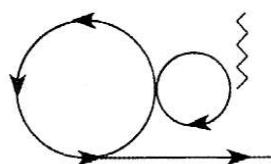


FIG. 1
CAN CHUTE FEED
counterclockwise

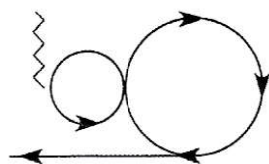


FIG. 2
CAN CHUTE FEED
clockwise

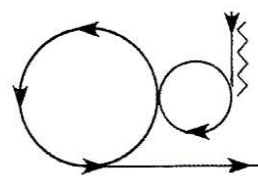


FIG. 3
INFEED CONVEYOR
counterclockwise

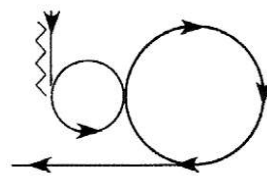


FIG. 4
INFEED CONVEYOR
clockwise

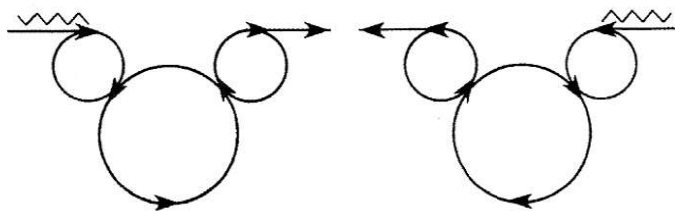


FIG. 5
THRU CONVEYOR
counterclockwise

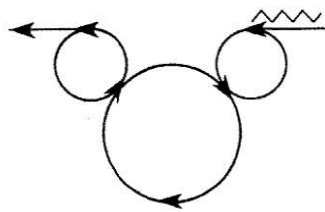


FIG. 6
THRU CONVEYOR
clockwise

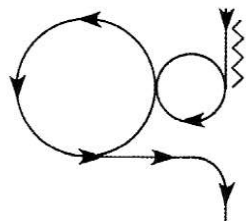


FIG. 7
INFEED CONVEYOR
WITH OPTIONAL DISCHARGE
counterclockwise

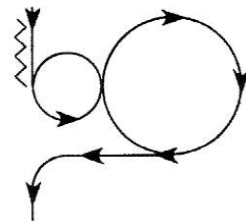


FIG. 8
INFEED CONVEYOR
WITH OPTIONAL DISCHARGE
clockwise

INFORMATION NEEDED TO PREPARE YOUR QUOTATIONS

- Containers - Sample of each size container or the following data:
 - Material (metal, glass, other)
 - Diameter
 - Height
 - Size of opening
- Product or products to be filled if filler is to be used for more than one type. Forward samples as in the filled condition, if possible, indicating filling temperature, viscosity, and specific gravity.
- Containers per minute to be filled.
- Type of seamer or capper (make and model)

I.P.S.A.

HOW TO SAVE THOUSANDS OF DOLLARS PER YEAR

Table showing $\frac{\text{weight}}{\text{cost}}$ of product lost in tons per year by overfilling each container by one gram up to five grams.

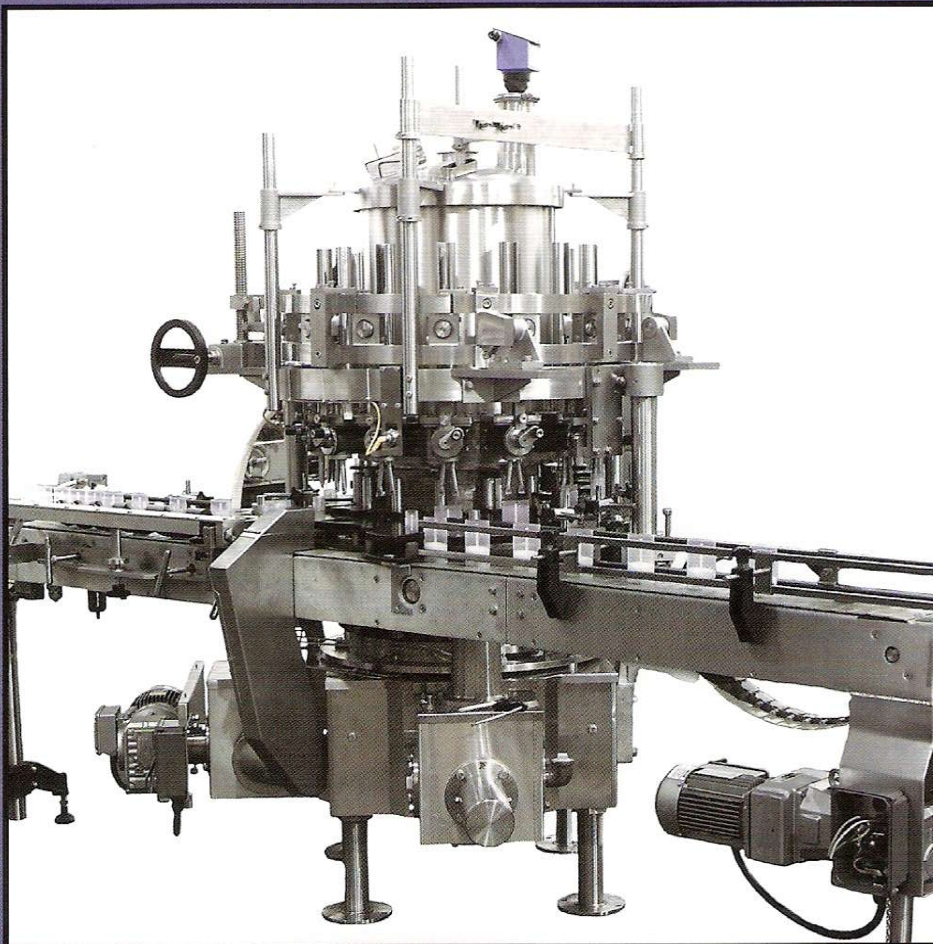
		OVERFILL COST					GRAMS TONS	
		1	2	3	4	5		
PRODUCT COST @	SPEED No. of Containers per minute	GRAMS					TONS	
		10	20	30	40	50		
		\$10000	\$20000	\$30000	\$40000	\$50000		
		20	40	60	80	100		
		\$20000	\$40000	\$60000	\$80000	\$100000		
		30	60	90	120	150		
		\$30000	\$60000	\$90000	\$120000	\$150000		
		40	80	120	160	200		
		\$40000	\$80000	\$120000	\$160000	\$200000		
		50	100	150	200	250		
		\$50000	\$100000	\$150000	\$200000	\$250000		

Based on fifty 40 hour weeks... or 2000 hours.

Elmar's Patented "Individual Piston Stroke Adjustment"

For Rotary Piston Fillers, existing or new.

Each piston slide block contains the mechanism to enable micro-adjustment to be made to increase or decrease by a few grams either way the volume of product dispensed and, since each piston can be adjusted individually, the range or spread of overfill over the complete machine can be virtually eliminated.



"Domed" Pistons

ELMAR WORLD HEADQUARTERS
200 GOULD AVE • PO BOX 245 • DEPEW, NY 14043-0245 (BUFFALO)
TEL + 1 716 681 5650 FAX + 1 716 681 4660

www.elmarworldwide.com

