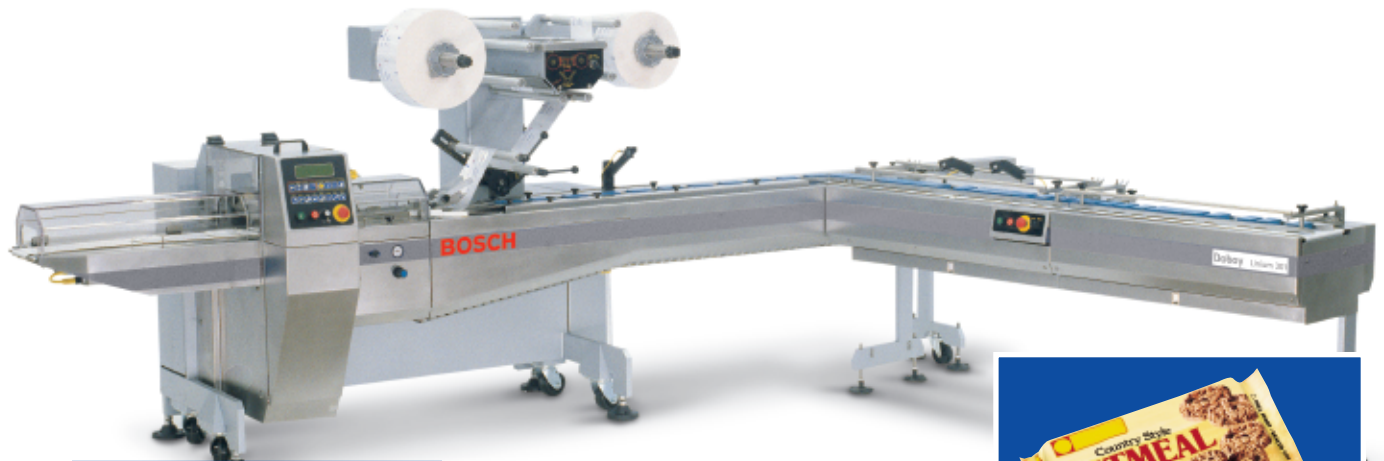


Linium 301

Rotary Head Horizontal Wrapper

High-Speed Wrapper for Bakery, Confection, Frozen Food and Non-Food Products



*Adjustable Former Option,
Fewer Parts for Faster Changeovers*



Precision Control, Quality Packages

Optional Accessories and Crossbelt Feeder Shown



PACKAGE:

- End seal: Vertical or horizontal crimp pattern, with straight or optional zigzag cutoff
- Longitudinal seal: Checkered or horizontal seal pattern

PACKAGING MATERIAL

- Printed or unprinted heat sealable or cold seal films
- Polypropylenes
- Laminates
- Most heat sealable films

CONSTRUCTION:

- Steel plate frame construction
- Cantilevered product track (infeed, finwheel and cutting head)
- Servo driven

OPERATION:

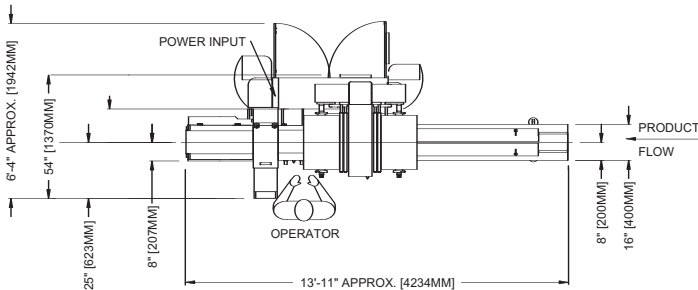
The Linium 301 wrapper uses flat wound roll stock film and creates a complete overwrap around the product. The products are fed into the infeed conveyor of the machine, a former forms film around the product, a longitudinal "fin" seal is created, and then the ends of the packages are sealed and cut apart. The Linium 301 wrapper is popular due to its high-speed capabilities, product size flexibility, and simple operation.

PRODUCTS PACKAGED:

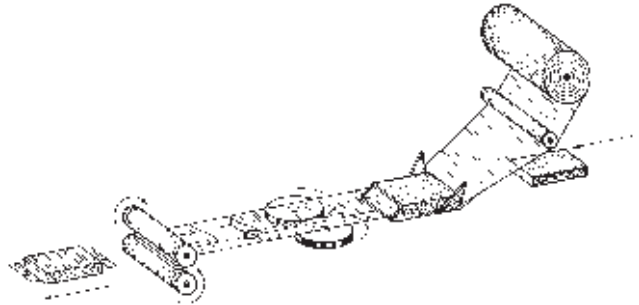
- Single piece items
- Multi-packs
- Trays
- Biscuits and bakery
- Confection
- Pharmaceutical and healthcare
- Hardware and toiletries
- Food

Rotary Head Horizontal Wrapper

LINIUM 301 MECHANICAL DIMENSIONS:



OPERATION SCHEMATIC:



SPECIFICATIONS:

OUTPUT: Up to 150 packages per minute (1up crimper)
Up to 350 packages per minute (2up crimper)
Up to 50m/min (1960"/min) film speed

Product and film characteristics may affect machine output.

SIZE RANGE:

Crimper diameter: # of crimpers: Length x maximum height:
120mm (4.7"): 1up (standard): 170mm-375mm (6.7"-14.75")
x 65mm (2.5")
2up: 90-185mm (3.5-7.25") x 65mm (2.5")
150mm (5.9"): 1up: 210mm-470mm (8.25"-18.5") x 95mm (3.75")
2up: 120mm-235mm (4.0"-9.25") x 95mm (3.75")
180mm (7.0"): 1up: 300mm-565mm (11.8"-22.25") x 120mm (4.5")
Product width: 10mm-175mm (0.4"-6.9")
End knife width: 180mm (7.0")

Options required to achieve maximums.

WEB DIMENSIONS:

Standard width: 600mm (23.6")
Maximum width (optional): 790mm (31.0")
Maximum reel diameter: 400mm (15.7")
Core diameter: 75mm (3.0")

CONNECTIONS:

Voltage: 230V, 50/60hz, 3 phase standard
Power usage: 15 amp, 5 KVA
Air: 80 PSI (5.5 bar), 0.2 CFM

STANDARD FEATURES:

- Heavy-duty steel plate frame construction
- Electric eye for registered film
- 2m (6.5') infeed conveyor with adjustable pitch snap-in pushers
- 3 servo motors (infeed, finwheel and cutting head)
- 1up, 120mm diameter crimper assembly
- 3 finwheel unit (cold, hot, auxiliary fold-over)
- Low backlash crimper drive
- Wing style former
- Pre-programmable product set-up for 20 products, including package length, speed, crimper dwell and product position
- Food grade product contact parts

OPTIONS:

- Second film spindle
- Air evacuation
- 600mm backstand
- Power feed roll
- No product-no bag
- No gap-no seal
- Adjustable former
- Date coder
- Film splicer
- Package gusseting
- Stainless steel frame
- Additional finwheel (heated)
- Automatic feeders – inline, crossbelt, hoppers, parallel belt and product distribution solutions

The machinery shown herein may have had guards removed for illustrative purposes. NEVER operate this machinery without all guards in place and all safety features in original working condition. ALWAYS refer to the operator's manual, or contact Doboy, for additional information. Specifications subject to change without notice.

Doboy Inc.

A Bosch Packaging Technology Company
869 South Knowles Avenue
New Richmond, WI 54017 USA
Phone (715) 246-6511
Fax (715) 246-6539
sales@doboy.com
www.doboy.com

Doboy Inc.

BOSCH