

MGLC

Short-Footprint Tri-Seal Topload Carton Closing Machine



Category Cartoning
Load Type Topload



Overview

The Mini GLC is Kliklok's short-footprint lugless-style carton closer. It is ideal for automatic sealing of hinge-cover, tri-seal-style, top-load cartons with hot-melt adhesive at speeds up to 120 cartons per minute. The reduced-scale, straight-line, lugless design is based on the highly successful Genesis carton closer. The Mini GLC maintains the ability to handle a generous carton size range with rapid size changes and is easily adjustable, while operating at more moderate speeds.

Performance

Speed

Variable up to 120 CPM

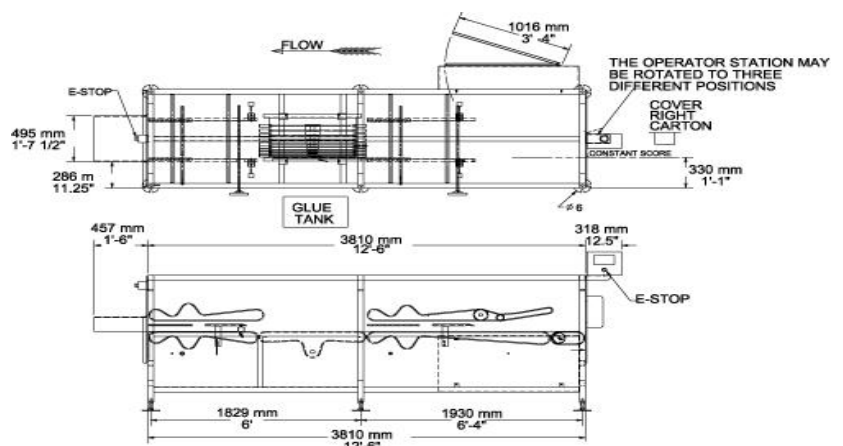
Actual speed depends upon carton size and style.

	Minimum	Maximum
Length	95mm (3.75")	381mm (15")
Width	95mm (3.75")	305mm (12")
Depth	25mm (1")	127mm (5")



Standard Features

- ✓ Stainless Steel Construction
- ✓ Lugless Design
- ✓ Reduced Machine Frame Size
- ✓ Color Touch Screen Operator Interface
- ✓ Cantilevered Overhead Assembly
- ✓ Roller Compression
- ✓ Carton Transport via Durable, Twin Urethane Belts
- ✓ Running Adjustment for Carton Transport
- ✓ Straight-Line, 90 Degree Carton Turner (Positive In-Line Carton Turning)
- ✓ Fast and Simple Size Changes
- ✓ Jam Sensors at Infeed and Turn Sections
- ✓ Minimum Maintenance
- ✓ Flange Mounted Main Power Supply Disconnect
- ✓ Nordson Adhesive System
- ✓ CE Mark



Utilities

Electrical

230 VAC +5%/-10%, 3Ø with ground (PE), 50/60 Hz

380-420 VAC, 3Ø wye with neutral and ground (PE), 50/60 Hz

13 kW (13 kVA) service required

Electrical system conforms to NFPA 79 and HSWA/IEC 204 (EN60204)

Air Consumption

85 liters/min (3 CFM) @ 5.5 bar (80 PSI)

Optional Features

- ✓ Hood-Cover Closure
- ✓ Cover-Left Carton Orientation
- ✓ Casters for Portability
- ✓ Size-Range Modifications
- ✓ Modifications for Washdown Environments
- ✓ Special Electricals and Voltages
- ✓ Automatic Lubrication