



KALISH

Practical Packaging Automation

SWIFTPACK*

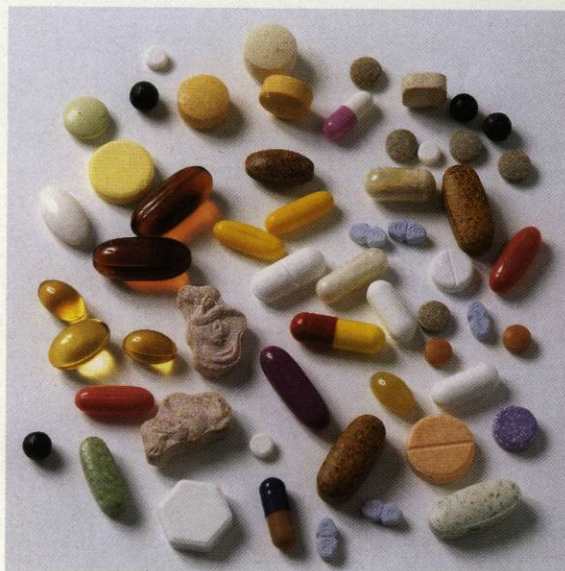
*High-speed electronic
tablet and capsule
counter*

*No change parts. Fast change-
over. Handles almost any
product at speeds up to
120 bottles per minute. Your
competitive advantage.*

The SWIFTPACK* Counter

The Swiftpack counter offers maximum versatility for packaging tablets, caplets and hard/soft capsules at speeds up to 120 bottles per minute. It's the ideal solution for frequent product and package changes.

Electronic controls feature instant memory recall for fast, easy set-up on up to 100 products. Changeover time is reduced to minutes and no change-parts are required. The Swiftpack counter is delivered complete; ready to handle virtually any product or container.



Features

- Compact design accommodates 8, 12 or 16 tracks and single or twin heads
- Easily integrates with any packaging line
- 316 stainless contact parts. Elegant, sanitary GMP design, with few contact parts, reduces opportunities for cross-contamination.
- Dismantles for cleaning in 5 minutes. Quick-release captive fasteners eliminate tools. Soft touch control panel wipes clean.
- Keypad entry selects 100%-accurate count from 1 to 65,000
- Powerful microprocessor maximizes speed and eliminates miscounts. Count, batch size, bottle indexing, product scan time, pre-count and speed set-back are memorized for instant recall on up to 100 products. Data security lock-out can limit access to control panel.
- Built-in diagnostics, with fault display, alert operators to conditions such as blocked heads, product overfeed, overcount, low air supply, no bottle and batch completion
- Easy-to-read manuals. Installation, training and spare parts available world wide
- Dedicated change-parts, air jets and hard-to-clean brushes or wipers are completely eliminated.



Optional Equipment

Chute and Baffle Assembly - standard design eliminates trap boxes and vibratory discharge systems. Short drop to container protects delicate products; speeds output. No moving parts; easy changeover and fast cleaning.

Funnel Assembly - with interchangeable funnels to feed products directly into containers of any size. No lifting/lowering of bottles required.

Chip and Dust Extraction Manifold - convenient vacuum hook-up at rear of machine

Simple Bottle Indexing Systems - Indexing fingers are easily adjusted for any size container. Starwheel "Starkit" assures fast changeovers without adjustments.

■ **Additional Contact Parts Set** - an inexpensive solution for almost instant changeovers

■ **Low Hopper-Level Warning Light** - alerts operator when product reaches a predetermined level

■ **Power Lift GMP Stand** - adjusts machine for different bottle heights at the touch of a button. Replaces hand crank.

■ **Vibratory Funnel** - discharge system assists flow of large products into containers with small necks

■ **Static Elimination Systems** - dissipates static charges generated by certain products and containers

■ **Airborne Dust Extraction Systems** - for extremely dusty products and operator safety

■ **Communications Port** - for computer integrated manufacturing



Construction Details

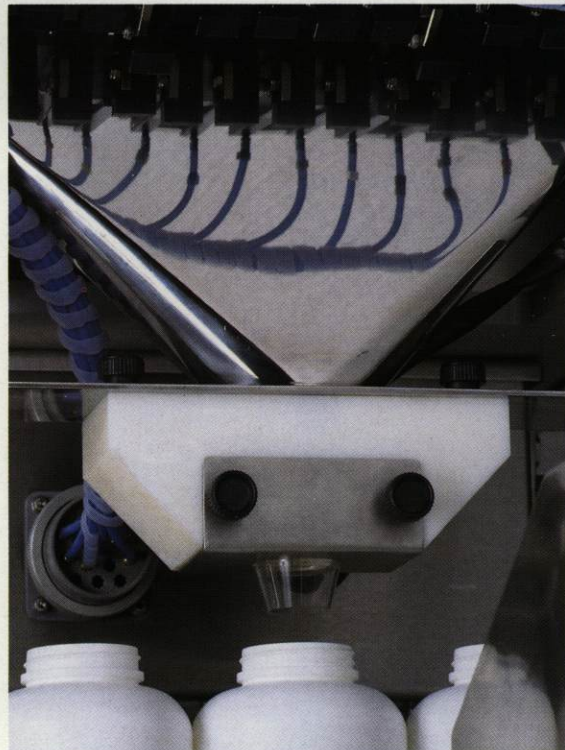
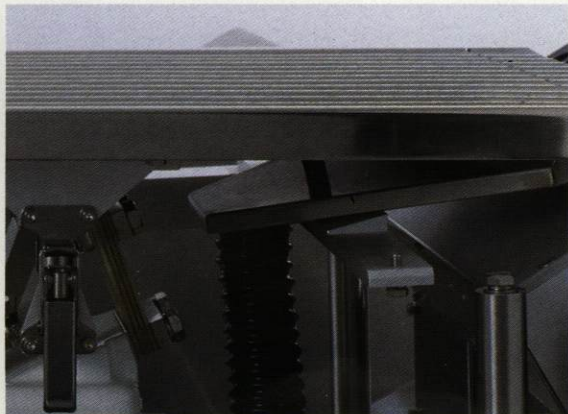
Lift-off hopper - available in various sizes

Hopper trough - features integral chip and dust extraction points

Primary and Secondary Feed Vibrators - sort and feed products to the count heads. Third feed vibrator with automatic feed control is included as standard on 16 track models for even product flow. Vibrator trays clip on/off for ease of cleaning.

Sealed Electronic Count Head - unique double-barrier sensor design is unaffected by dust. Scans every tablet 1000 times per second, easily recognizing two tablets passing as one. Product scan time is automatically stored in memory for recall.

Product Gate Assembly - speed and productivity are maximized by allowing counting to continue while filled containers exit. Gates automatically reopen when a new container is in position. Feed vibrators can be set to slow or stop, for large or odd-shaped products, thus eliminating blockage. Settings are automatically stored in memory for each product.



KALISH

Practical Packaging Automation

The Complete Line

Kalish manufactures a full range of machines for the automation of liquid or tablet packaging. Used around the world, Kalish equipment has an excellent reputation for engineering elegance, rugged construction, long term reliability and operator friendliness. Versatility is a design feature, so Kalish packaging machines can be easily integrated with virtually any product, container and packaging line.

Kalish has been designing packaging solutions for over 35 years.

H.G. Kalish Inc.

Montreal

165 Oneida Drive, Pointe Claire,
Quebec, Canada H9R 1A9
Tel.: (514) 694-2390 Telex: 05-822774
Fax: (514) 694-6552

Toronto

6535 Mill Creek Drive, Unit #62
Mississauga, Ontario, Canada L5N 2M2
Tel.: (416) 542-8080
Fax: (416) 542-8082

Somerville, New Jersey

216-6 U.S. Highway 206 South,
Somerville, NJ, U.S.A. 08876
Tel.: (908) 359-1202
Fax: (908) 359-0007

*SWIFTPACK AUTOMATION LTD.
© 1991 Kalish Swiftpack 91/09