

## Model FT Series Centrifugal Feeder

### FT-40-RD, FT-50-RD and FT-60-RD ANSI/Metric Installation & Maintenance Manual

Refer all servicing to qualified personnel.

This manual is intended for use by qualified mechanics and electricians who install or service the Hoppmann FT-40-RD, FT-50-RD and FT-60-RD Centrifugal Feeders.

Use this manual for the FT-40-RD, FT-50-RD and FT-60-RD ANSI or Metric style Centrifugal Feeders, cold rolled steel or stainless steel, single or dual drive systems, manufactured after October, 1996.

Record your serial plate information here for future reference



Model Number	Serial Number/Date

First Edition, Publication Version, All Rights Reserved.  
Copyright 2012 by Shibuya Hoppmann Corporation.

Duplication of this manual, in whole or in part, requires prior written consent from Shibuya Hoppmann Corporation.

**Headquarters**  
13129 Airpark Drive  
Suite 120  
Elkwood, VA 22718  
540.829.2564 **t**  
800.368.3582 **t**  
540.829.1726 **f**

**Sales**  
1445 Brookville Way  
Suite F  
Indianapolis, IN 46239  
317.322.0754 **t**  
800.368.3582 **t**  
317.322.0794 **f**

**Manufacturing**  
281 Dillard Road  
Madison Heights, VA  
24572  
434.929.4746 **t**  
800.543.0915 **t**  
434.929.4959 **f**

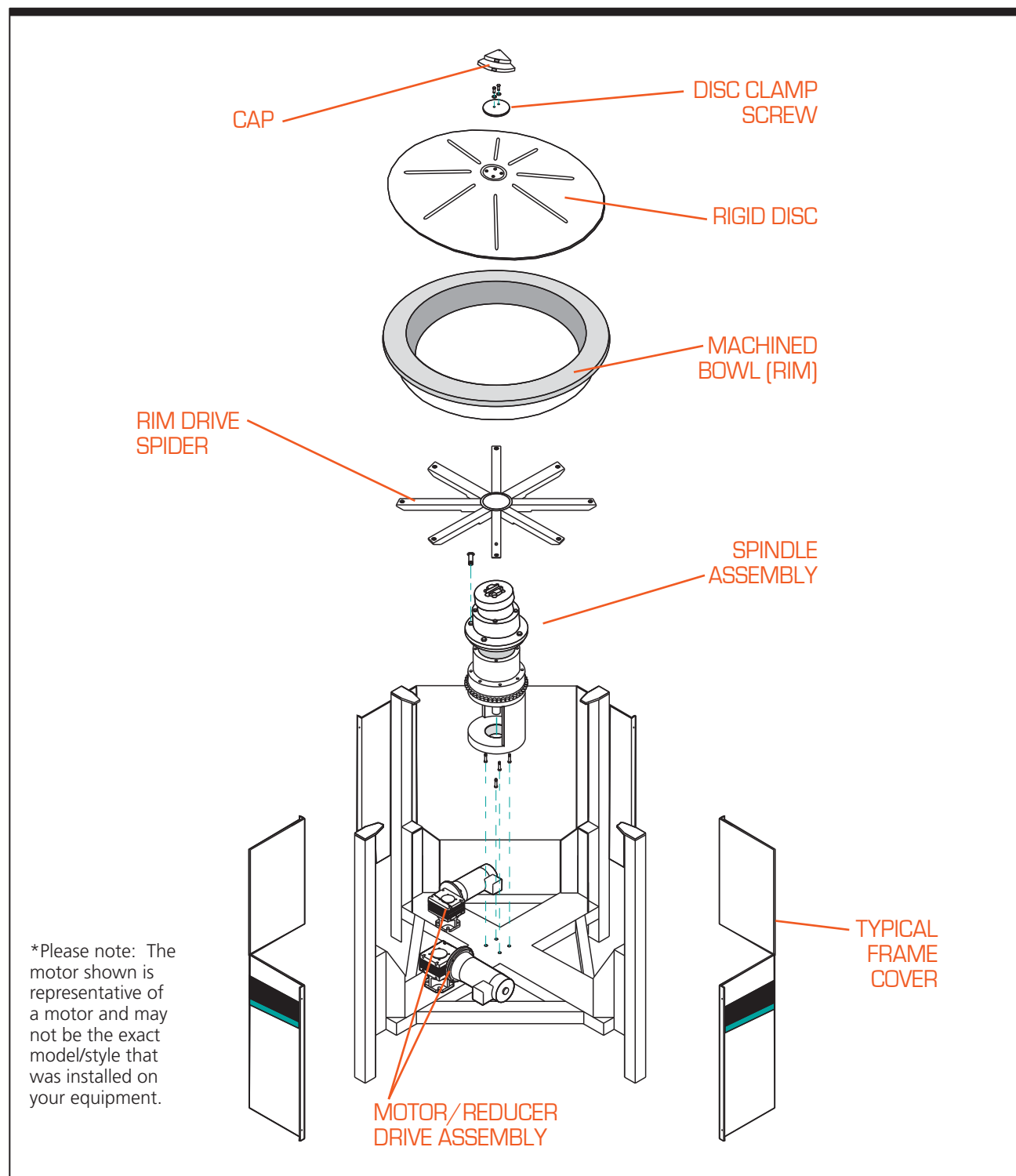


Figure 1-1. Typical FT-Series Dual Drive Feeder - Exploded View

---

# Feeder Description & Specifications

## 1

### Overview of the FT-40, FT-50 and FT-60-RD

Thank you for purchasing a Hoppmann Centrifugal Feeder. Hoppmann feeders are easy to use, easy to maintain and easily handles your product quietly and rapidly.

**Function** Each centrifugal feeder unscrambles, orients and feeds product. (Refer to Figure 1-1 for an exploded view of the FT-40/50/60-RD feeder). The delivery rate varies depending on product characteristics. The feeder easily interfaces with Shibuya Hoppmann's prefeeders, accumulating conveyors and assembly equipment. (See to Figure 1-2 for the FT-40-RD product specifications, Figure 1-3 for the FT-50-RD and Figure 1-4 for the FT-60-RD product specifications.)

**Operation** **Step 1—The Feeder Accepts Your Product.** Every feeder accepts product from a separate bulk supply hopper or prefeeder. Product drops randomly, a few at a time, onto a rigid disc.

➡ It is recommended that you carefully meter product into the bowl a few parts at a time, rather than emptying, in bulk, directly into the feeder bowl. Once the feeder has received parts, it should start delivering singulated parts almost immediately.

**Step 2—The Feeder Loads and Qualifies Your Product.** Product is metered into the bowl, dropping onto the rigid disc, and loaded onto the rim for singulation and qualification. The rim moves the product past mechanical, pneumatic and/or optical qualifiers. Improperly oriented product is rejected, and returned to the reservoir area of the bowl for recirculation.

**Step 3—The Feeder Delivers Your Product.** Next, product moves off the rim and out of the centrifugal feeders, in proper orientation, for delivery to downstream operations.

## Specifications of the FT-50-RD

**Standard Features** The FT-50-RD is standard with stainless steel exterior construction, an FDA approved ABS vacuum formed disc, and a Teflon® hard-coated anodized aluminium bowl.

**Optional Features** The FT-50-RD feeder can be easily integrated with polycarbonate covers (safety covers), washdown motor(s), a dual motor drive system, and a variety of controllers and operating systems.

**Specifications** Please refer to the tables below for FT-50-RD specifications:

Performance Specifications	ANSI	Metric
Maximum Bowl Linear Speed (@ Rim ID) <sup>1</sup>	400 feet/min	102 meters/min
Vertical Bowl Runout (Maximum)	0.020 "	0.500mm
Vertical Disc Runout (Maximum)	0.100 "	2.500mm
Electrical Specifications	DC	AC
Motor Size	1/2hp	1/2hp
Motor Frame Size	56C	56C
Supply Voltage	90 Volts	208-230/460 <sup>3</sup>
RPM	1750	1750
Power Usage	8 Amps	3 Amps

Table 1-3. FT-50-RD Performance Specifications and Electrical Specifications

<sup>3</sup> Maximum speed is not the operating speed. This is provided as a reference value only.

<sup>4</sup> 3 Phase, 60 Hertz supply voltage for AC motor.

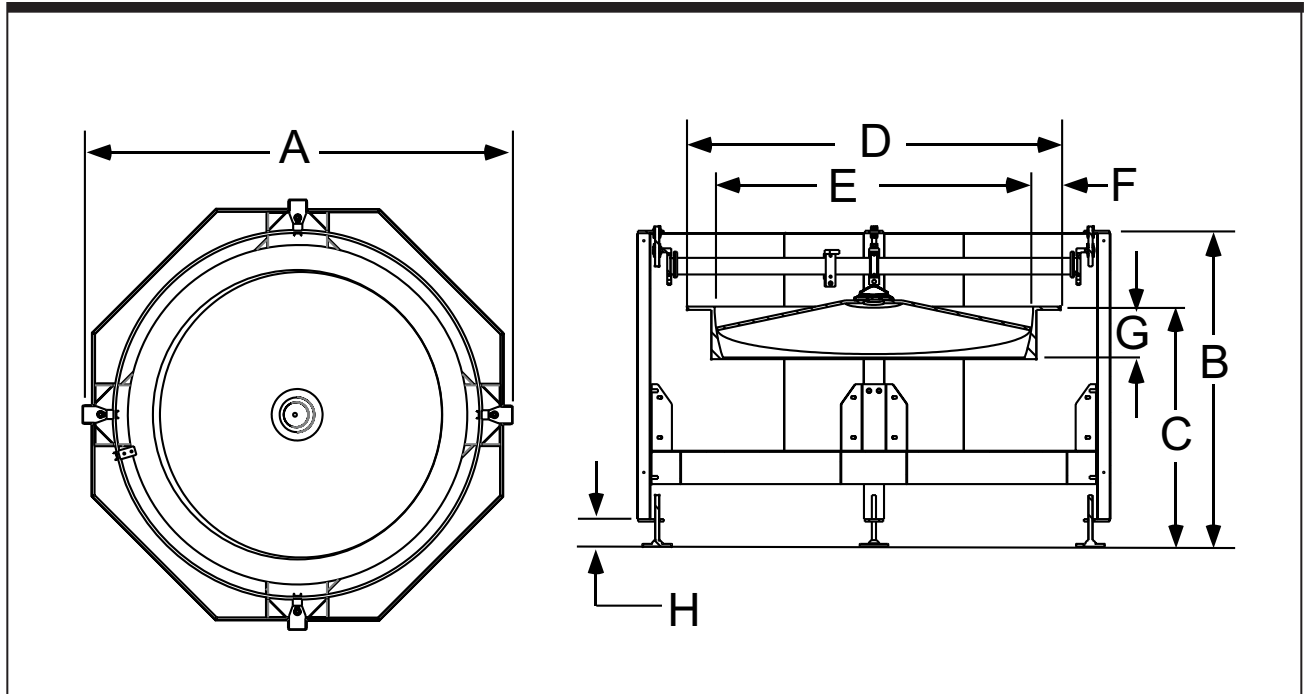


Figure 1-3. FT-50-RD Side and Top Views

Dimension Specifications		ANSI	Metric
A	Outer Wall Diameter	71"	1804mm
B	Overall Height	47" $\pm$ 1.5"	1194 $\pm$ 38mm
C	Discharge Height	36" $\pm$ 2"	914 $\pm$ 51mm
D	Bowl Outside Diameter	56"	1422mm
E	Bowl Inside Diameter	47.10"	1196mm
F	Rim Width	4.13"	105mm
G	Bowl Depth	7.10"	180mm
H	Level Foot Adjustment (Height)	5" $\pm$ 2.5"	127 $\pm$ 64mm
Disc Diameter		47.10"	1196mm
Disc-Bowl Gap		0.050"	1.27mm
Overall Weight (Untooled)		$\approx$ 1050 lbs.	$\approx$ 476 kg

Table 1-4. FT-50-RD Dimension Specifications

## Shibuya Hoppmann offers a wide selection of products:

- ➡ Hoppmann Centrifugal Feeders™
- ➡ Prefeeders
- ➡ Continuous Motion Assembly
- ➡ Placement Systems
- ➡ Fillers and Cappers
- ➡ Conveyors
- ➡ Product Handling Equipment
- ➡ Aseptic Filling Systems
- ➡ Labelers
- ➡ Decontamination Equipment
- ➡ Intermittent Motion Assembly
- ➡ Integrated Product Lines

### Headquarters

13129 Airpark Drive  
Suite 120  
Elkwood, VA 22718  
540.829.2564 t  
800.368.3582 t  
540.829.1726 f

### Sales

1445 Brookville Way  
Suite F  
Indianapolis, IN 46239  
317.322.0754 t  
800.368.3582 t  
317.322.0794 f

### Manufacturing

281 Dillard Road  
Madison Heights, VA  
24572  
434.929.4746 t  
800.543.0915 t  
434.929.4959 f