

# VersaBlue® Adhesive Melters

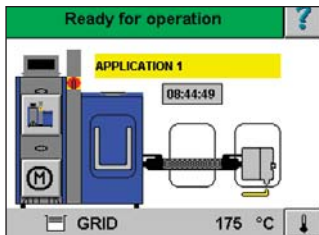
**Nordson**

## 50 and 100 liter melters

Nordson VersaBlue melters are designed for precise, demanding hot melt adhesive applications. A choice of metering spur-gear pumps with variable-speed AC motors satisfies a wide range of manufacturing requirements. A grid and reservoir tank design reduces adhesive degradation while maximizing adhesive throughput. A powerful industrial PC provides full control of the adhesive system via a touch-screen interface.

VersaBlue melters:

- Install quickly and easily
- Provide easy day-to-day operation
- Simplify routine maintenance
- Maximize uptime
- Serve a broad range of industries



Graphical, touch-screen system control with status display of the tank, hose(s) and gun(s)



Entry panels make access to melter components quick and easy



Large, accessible tank opening allows easier filling and cleaning



Pump shut-off valve and single-tool removal provide quick, easy pump replacement



Quick plug-in  
hose/gun pairs

	VersaBlue 50	VersaBlue 100
<b>Holding Capacity</b>	50 L (3051 in <sup>3</sup> ) 48.5 kg (106.7 lb)	100 L (6102 in <sup>3</sup> ) 97.0 kg (213.4 lb)
<b>Throughput (per hour)<sup>1</sup></b>	75 kg (165 lb)	150 kg (330 lb)
<b>Melt Rate (per hour)<sup>1</sup></b>	50 kg (110 lb)	100 kg (220 lb)
<b>Weight (empty)<sup>6</sup></b>	275 kg (606 lbs)	360 kg (798 lb)
<b>Number of Guns</b>	2, 4 or 6	2, 4, or 6

## Specifications

### Type of System

Release-coated grid and reservoir  
Spur-gear pump with variable speed AC motor

### Number of Pumps

1 or 2

### Maximum Pump Rate<sup>1 & 2</sup>

1.4 to 82 kg/hr (3 to 180 lb/hr)

### Filter Type

Saturn® basket-style filter

### Maximum Working

### Hydraulic Pressure

85 bars/8.5 MPa (1230 psi)

### Operating Temperature

### Range<sup>3</sup>

40 to 230°C (100 to 450°F)

### Ambient Temperature Range

0 to 50°C (32 to 122°F)

### Temperature Control

### Stability

±1°C (2°F)

### Electrical Service<sup>4</sup>

200 VAC 3 phase 50/60 Hz<sup>5</sup>  
200 to 240 VAC 3 phase 50/60 Hz  
380 to 415 VAC-Y (3 phase N/PE) 50/60 Hz  
400 VAC 3 phase 50/60 Hz<sup>5</sup>  
480 VAC 3 phase 50/60 Hz<sup>5</sup>

### Maximum System

### Power Capacity

#### 2 hoses/guns

#### 4 hoses/guns

#### 6 hoses/guns

#### 8 hoses/guns

### 50 liter

14875 watts

18475 watts

22075 watts

N/A

### 100 liter

23490 watts

27090 watts

30690 watts

34290 watts

### Input/Output Capability

#### Standard

7 outputs; 10 inputs

### Maximum Pressure Sensors

2

### Melter Dimensions

#### (W x H x D)

### 50 liter

1000 x 1382 x 782 mm  
(39.4 x 54.4 x 30.8 in)

### 100 liter

1100 x 1382 x 1035 mm  
(43.3 x 54.4 x 40.8 in)

### Installation Dimensions

#### (W x H x D)

1760 x 1661 x 1125 mm  
(69.3 x 65.4 x 44.3 in)

2111 x 1565 x 1496 mm  
(83.1 x 61.6 x 58.9 in)

### Protection

IP 54

<sup>1</sup> Actual rates will vary depending on adhesive type, application parameters and input voltage.

<sup>2</sup> Range given is for maximum pump rate of various pumps available.

<sup>3</sup> High temperature unit available with operating range of 40 to 250°C (100 to 480°F).

<sup>4</sup> Permitted deviation from rated line voltage is ±10%.

<sup>5</sup> With integrated transformer.

<sup>6</sup> Weight depends on melter configuration.

Profibus is a registered trademark of Profibus International

Casters optional.

Profibus® and Ethernet I/P optional.



For more information, talk with your Nordson representative or contact your Nordson regional office.

### United States

Duluth, Georgia

Telephone: (800) 683-2314

Toll-free Facsimile:

(866) 667-3329

### Canada

Markham, Ontario

Telephone: (800) 463-3200

Facsimile: (905) 475-8821

### Europe

Lüneburg, Germany

Telephone: (49) 4131-894-0

Facsimile: (49) 4131-894-149

### Japan

Tokyo, Japan

Telephone: (81) 3-5762-2700

Facsimile: (81) 3-5762-2701

### Asia/Australia/

### Latin America

Amherst, Ohio

Telephone: (440) 985-4797

Facsimile: (440) 985-1096

[www.nordson.com](http://www.nordson.com)



When you expect more.®