

## Systech International® Innovating Packaging Execution Systems

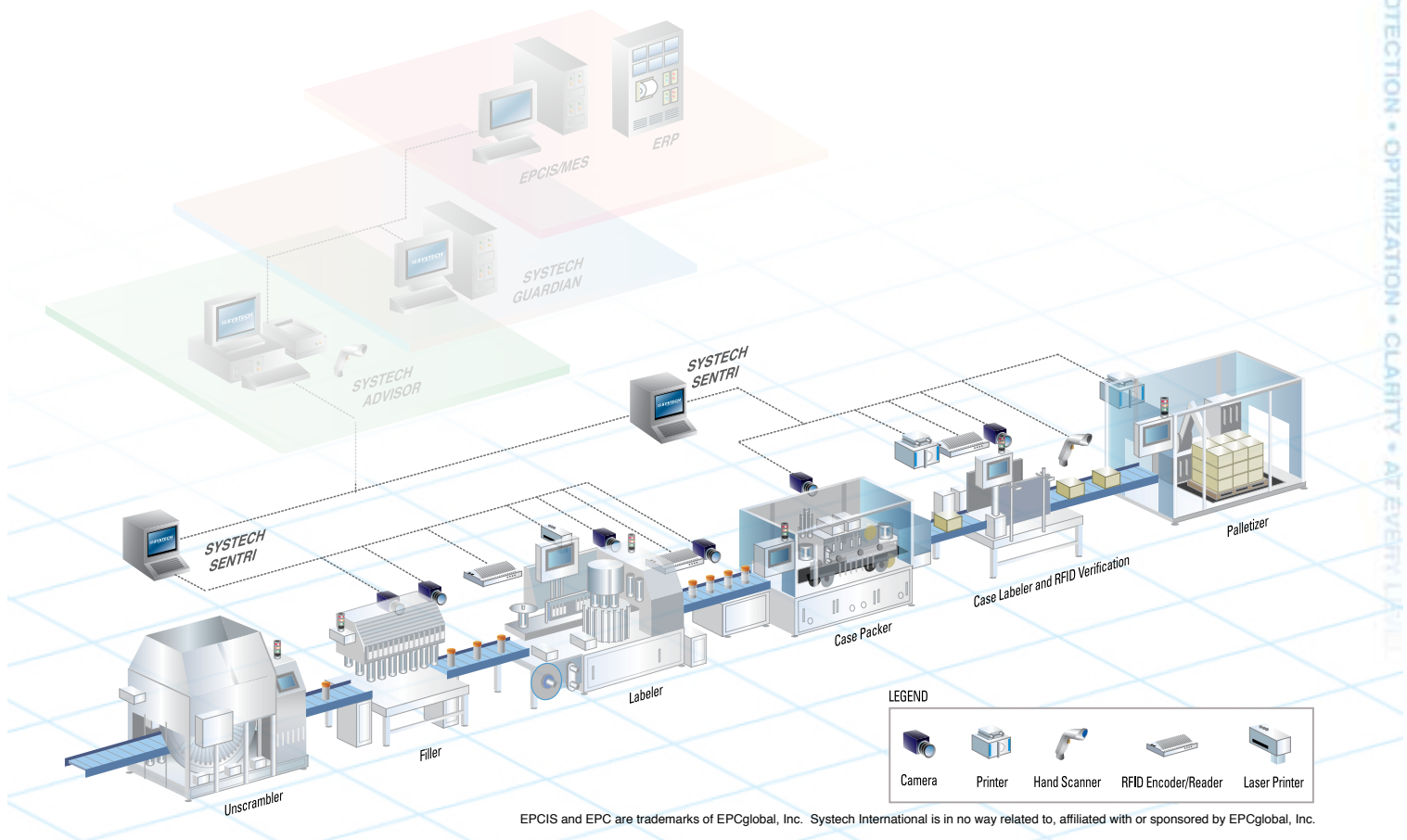
### Systech Sentri®

Systech Sentri® offers an extensive set of vision tools including Optical Character Verification (OCV), Optical Character Recognition (OCR), Bar Code Reader (BCR) and Print Quality Verification (PQV), which complement general quality inspection functions such as gauging, object presence, shape, defect, count and color.

The Sentri product comes complete with audit logs to provide assurance for procedural control, quality and regulatory compliance. It also conducts device set up, recipe-driven workflow, control of intelligent online devices (printers, bar code scanners, and checkweighers) to ensure integrated quality control and reject station management.

Sentri is the vision product of choice among leading pharmaceutical manufacturers for the following key benefits:

- Ease of deployment and use
- Provides higher accuracy and greater benefit because of its “true” OCV capability
- Exceptional vision inspection speeds
- Works with color and monochrome images in any combination
- State-of-the-art performance for individual character recognition inspections
- One-time font-training library
- Simplifies training and ensures uniformity across all packaging operations since inspections are executed from a single, consistent and intuitive user interface



## Sentri Product Specifications

- Support an unlimited combination of inspection tools on a single image
- Up to 4 camera acquisition channels in base system
- Supports the most diverse range of cameras on the market
- Expands to control up to 12 camera ports

## Sentri Inspections

### Optical Character Verification (OCV)

"True OCV" compares characters to stored font libraries to verify each character independently, and accurately. Uses statistical training to incorporate normal variations in text appearance, and inspects text in different orientations.



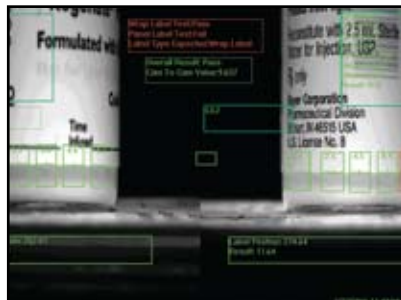
### Case Contents

Detects missing cartons in cases upon loading of each layer.



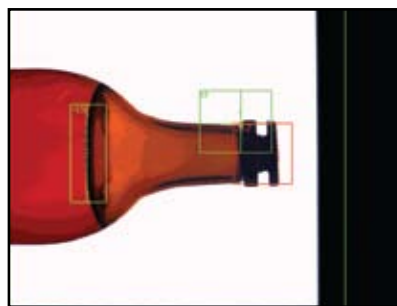
### Label Skew

Lighting technique and edge detection tools used with two opposing cameras to ensure accurate application of label.



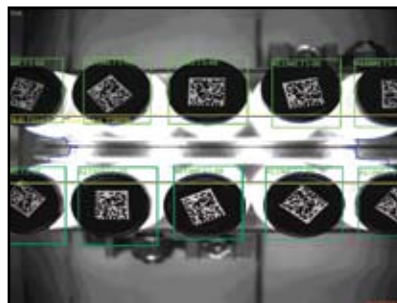
### Print Quality Verification (PQV)

Verifies quality of print by detecting print dropout and excess. Includes inspection of graphics and text.



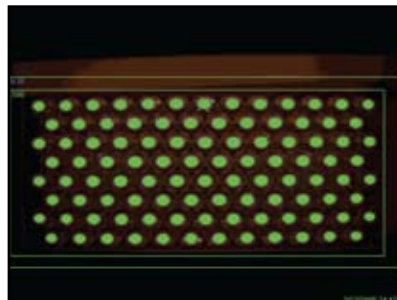
### Stop Position and Fill Level

Inspects stopper position and liquid fill level. Utilizes edge detection to locate the stopper position and fill level.



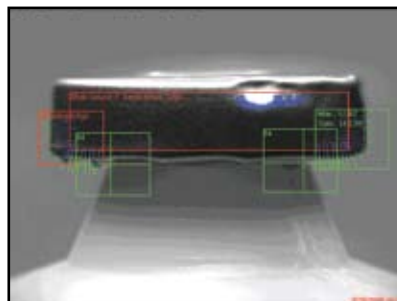
### Ultraviolet-Datamatrix

Decoding UV printed data using UV illumination for bright stocking/nude labeling.



### Vial Count

Verifies correct quantity and color of vials in cartons and trays.



### Vial Crimp

Detects seal defects and crimp deformations to ensure correct sealing of vials.

European Headquarters  
Belgium  
Pontbeekstraat 2  
1702 Groot-Bijgaarden  
Tel: +32 2 467 03 30  
Fax: +32 2 467 03 31

**SYSTECH**  
INTERNATIONAL

Offices Located in: US • Belgium • UK

US Headquarters  
2540 US Highway 130 Suite 128  
Cranbury, NJ 08512 USA  
Tel: +1.609.395.8400  
Toll Free: +1.800.847.7123  
Fax: +1.609.395.0064