

201 CASE ERECTOR

Around the Clock Dependability

- Variable Speed
- Heavy Duty Construction
- Allen Bradley Components
- Small Footprint
- Relay Logic Electronics
- Mostly Mechanical Operation



201 CASE ERECTOR TM

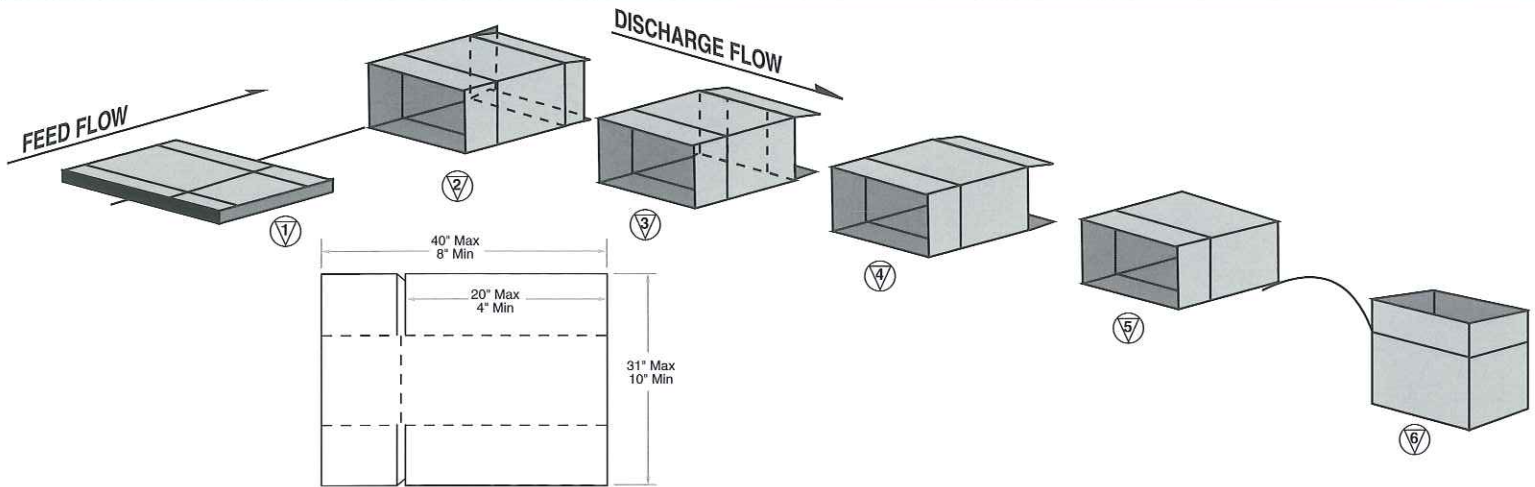
Standard Features:

- **Erects 8 to 30 Cases Per Minute**
(ERECTS/BOTTOM SEALS RSC, HSC, AFM & FOL STYLE BOXES)
- **Automatic Jam Detection**
- **Pressurized Hot Melt System**
(OPTIONAL PRESSURE SENSITIVE TAPE)
- **Quick Changeover**
(5 MINUTES OR LESS)
- **Multiple Case Size Capability**
- **Double-40 Pre-Stretched Chain**
(WITH TAKEUPS, TAPER LOCKS AND QD SPROCKETS)

Available Options:

- **U.L. Certification**
- **Tool-Less Changeover Available**
(ONLY COMPRESSION PLATE UPGRADE REQUIRED)
- **Steel Casters**
(CONVENIENT PORTABILITY)
- **Scaled and Pointed Adjustments**
(FOR EASY CASE SETUP)
- **Remote Start/Stop**
- **Power Infeed Conveyor**
(PROVIDES GREATER MAGAZINE CAPACITY)

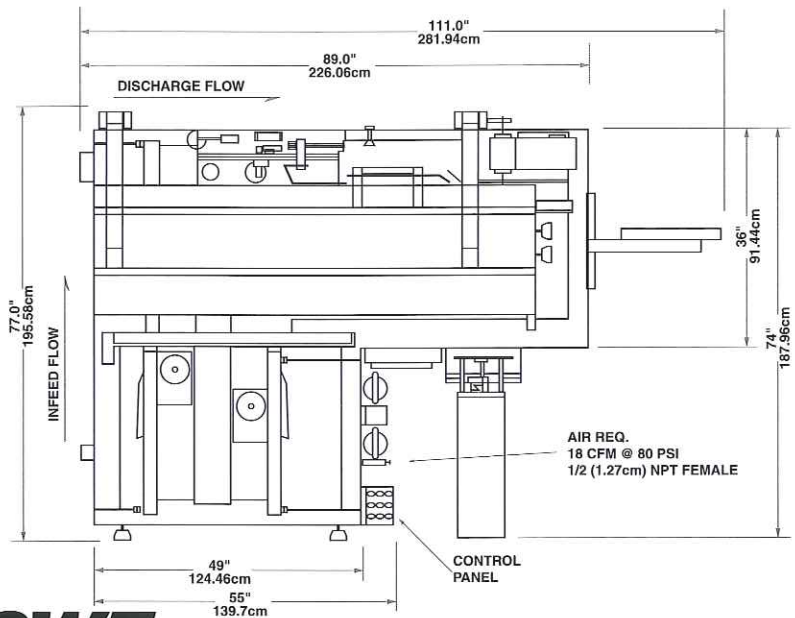
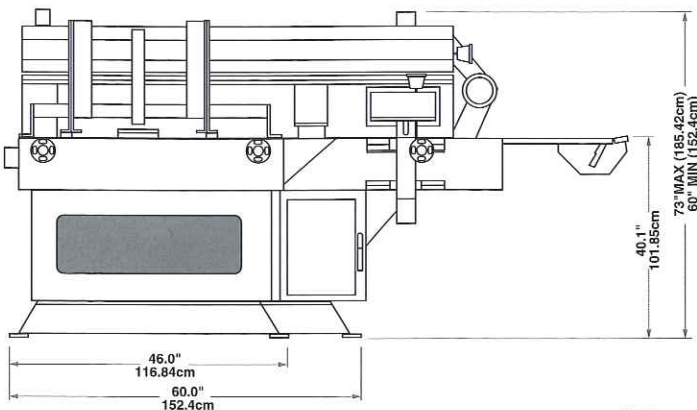
BOX SPECIFICATIONS/OPERATING SEQUENCE



Note: A four inch minimum case width is required. The Model 201 is capable of the minimum and maximum shown. However, the full range, smallest to largest, cannot be realized on an individual machine.

MACHINERY SPECIFICATIONS

Many Models Available:



1050 Miller Drive • Altamonte Springs, Florida 32701
(407) 260-0330 • fax: (407) 260-7096 • toll free: (800) 214-1565
e-mail: swf@swfcompanies.com

A **DOVER** DIVERSIFIED COMPANY

<http://www.swfcompanies.com>

MEMBER
PMMI
USA