



**THIELE**

**SERIES 60 PSC**

**CONTINUOUS**

**MOTION**

**CARTONER**



**Introducing the  
most efficient  
route your  
products can  
take to package  
the most profits.**

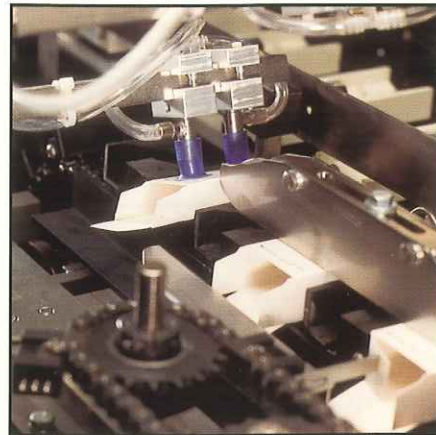
The Series 60 PSC Cartoner.

It can put control in your hands. Time on your schedule. Quality within fast, easy reach. And profits on your bottom line.

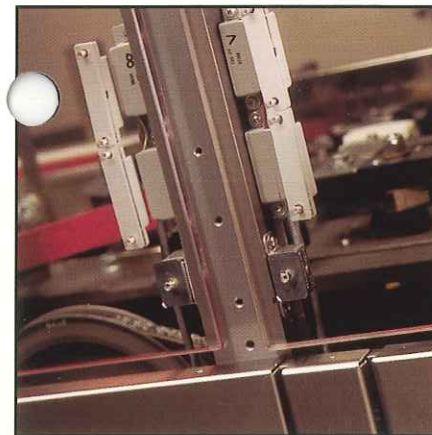
It can run at speeds up to 400 cartons per minute. It can handle the largest range of carton sizes in its class.

Literature can be easily integrated, whether sheet fed, rollstock fed or prefolded. And the Series 60 PSC can do all that within a most diminutive footprint – 12' x 4' – taking up very little of your operation's floor space.

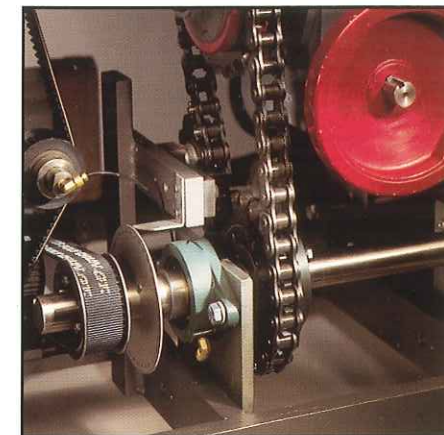
In fact, no other cartoner handles more products more efficiently in such a small space. Which means the right time for a more up-close look at this packaging standard is right now.



**HIGH SPEED CARTONING.** Up to 400 cartons/minute. Run the PSC continuously at variable high speeds. Or use a dwell as required, such as running 300 cartons/minute on single blister strips, changing to 30 cartons/minute on 10-up blisters.



**SAFE UPPER ACCESSIBILITY.** 3/8" Lexan guards are hinged for easy access to upper parts of the PSC. Interlocked to safely shut down the PSC when opened.



**VARIABLE SPEED POWER.** DC drive powers a 1-1/2" line shaft that runs the length of the PSC. Timing belts transmit power smoothly and efficiently, eliminating the need for long chains to various parts of the machine. AC and servo drives, optional.



**INFEEED CAPABILITIES.** Many different infeeeds are available, making the PSC especially well-suited to handle blisters (samples or hospital unit doses), bottles, tubes, transderm pouches, syringes, and many other products.

**NO CARTON/NO LOAD DECISION MAKING (PATENTED).** Virtually eliminates machine jams, spoiled product, operator intervention and downtime due to gate problems.

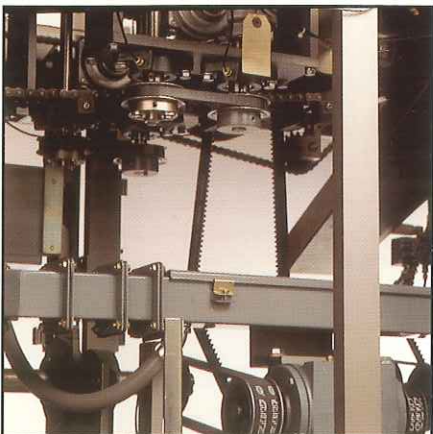




#### **ADVANCED PLC CONTROLS.**

Allen-Bradley PLCs interface with the alphanumeric display assuring digitally-precise accountability. Monitoring and troubleshooting the line are as easy as pushing a few buttons. Standard control features include no product/no carton and properly setup carton

enable load. Optional controls include barcode verification, open flap inspection/rejection, and QC program sampling. Other brand controllers, optional.



#### **EASY LOWER ACCESSIBILITY.**

Stainless steel lower panels provide open access to all lower areas of the PSC and assure thorough inspection for any possible product. Optional lift-off panels are interlocked for safety, effectively shutting the PSC down when opened.

#### **FAST CARTON SETUP.**

Low profile magazine is easy to load. All mechanically-driven design has no chains to adjust. 120° cartoner erectors, and also 240° cartoner erectors with pre-breaks, are available.

**SMALL 12' X 4' FOOTPRINT.** No other cartoner in the PSC's class offers so much solid performance in so little space.

**NEMA 12 WIRING AND ENCLOSURES, STANDARD.** Also, main enclosure is hinged for easy access. Photo-electrics and proximity switches have quick removal connectors. UL panels, NEMA 4X electrical and operator interface panels, optional.

**About the only  
thing faster than  
the PSC is the  
support you get  
from Thiele.**

Perhaps the best part of a PSC Cartoner is who you buy it from. Because throughout the entire decision-making process, Thiele professionals can help make things easier for you. Analyzing applications. Defining specifications. Installing the PSC. Training your personnel. And backing up the PSC with the latest diagnostics and maintenance procedures. In fact, we more than extend comprehensive support. We guarantee your PSC's high-speed performance.

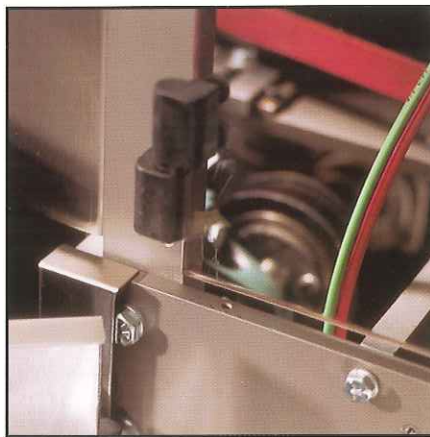
Let's talk about it.

Give us a call at 612/835-2290. Our fax is 612/835-5032. Or write to us at 7225 Bush Lake Road, Minneapolis, MN 55439. See what it's like to take one of the fastest (and most efficient!) routes from small product to cartoning profits.



### **FAST CHANGEOVERS.**

No tools needed. Operator makes simple screw adjustments. The phase adjuster (shown here) allows for fast "L" dimension changeover. When equipped with digital readouts, changeovers are fast, simple and precisely repeatable.



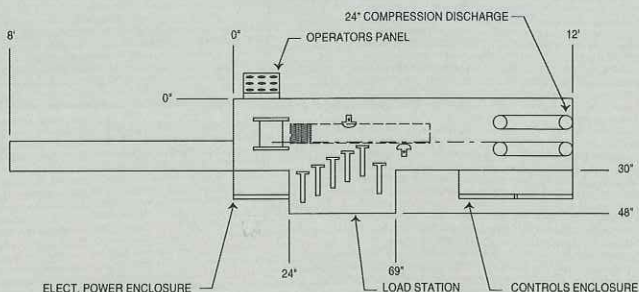
### **SOLID, STABLE FRAME.**

Made of 1" x 3" cold rolled steel. Welded and bolted design adapts to changing needs that's impossible with a cast frame. All holes are drilled and tapped, so bolts don't work loose.

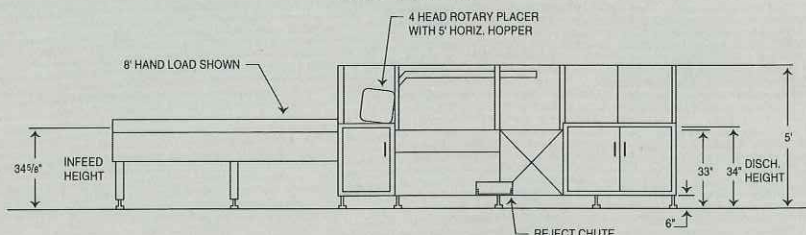




## TOP VIEW



## SIDE VIEW



**DRIVE** Variable speed DC motor to 1-1/2" line shaft

**MACHINE PITCH** 5"  
**FLITE CHAINS** 2 or 3 (#50 roller chain)

## CARTON SIZE RANGES

# CHAIN	LENGTH (L)	WIDTH (W)	DEPTH (D)
3 chains	1" to 3-1/2"	1/2" to 3-1/2"	3-3/4" to 6-1/2"
2 chains	1" to 3-1/2"	1/2" to 3-1/2"	2-3/4" to 4-1/2"

## FRAME CONSTRUCTION

**SPEED** Variable up to 400/minute

**LOWER FRAME** 1" x 3" cold rolled steel, continuously welded

**UPPER FRAME** 1/2" x 5" cold rolled steel, bolted

**LEGS** 1" threaded

**ADJUSTMENTS** Carton magazine, "W" and "D" dimension screw adjust. "L" dimension phase adjustable using harmonic drive. All others slotted. All adjusting points have scales and pointers. Digital readouts, optional.

**INFEED** Wide range of automatic infeeds available.

**MAGAZINE CAPACITY** 8' powered horizontal carton magazine, standard

**CARTON SETUP** 4 head gear driven rotary

**TOP HOLD DOWN** Manual swing away (powered, optional)

**GLUE SYSTEM** Nordson 3500 series, single horizontal pattern

**FLAP CLOSING** Mechanical dust flap, all others, plow type (tuck style cartons-orbital flap tuckers)

**COMPRESSION** Belt driven compression section

## ELECTRONICS

- Programmable logic control (Allen-Bradley SLC series, standard)
- Smart diagnostic display
- Stainless steel electrical enclosures
- NEMA 12 wiring and enclosures
- Programmable limit switch for glue timing and speed compensation
- Cartons/minute readout (on PLS display)
- 230/460 VAC, 60 HZ, 3 PH

## GUARDING

- Stainless steel lower guards
- 3/8" Lexan hinged uppers with safety interlocks

**FINISH** "Steel-It" epoxy, all parts in contact with product are stainless steel, anodized or hard coat aluminum

## COMPONENTS

- Efficient vacuum system
- Air filter regulator
- Step-down transformer for controls

## INSTALLATION REQUIREMENTS

- Power: one drop (specify voltage)
- Air: one drop 60-80 PSI

Specifications subject to change without notice.

## SPECIFICATIONS

## SERIES 60 PSC

## CONTINUOUS

## MOTION

## CARTONER



**THIELE**

**Thiele Engineering Company**  
7225 Bush Lake Road  
Minneapolis, MN 55439  
Telephone 612/835-2290  
Fax 612/835-5032