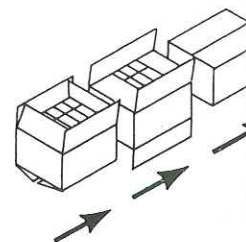


TECHNICAL DATA SHEET

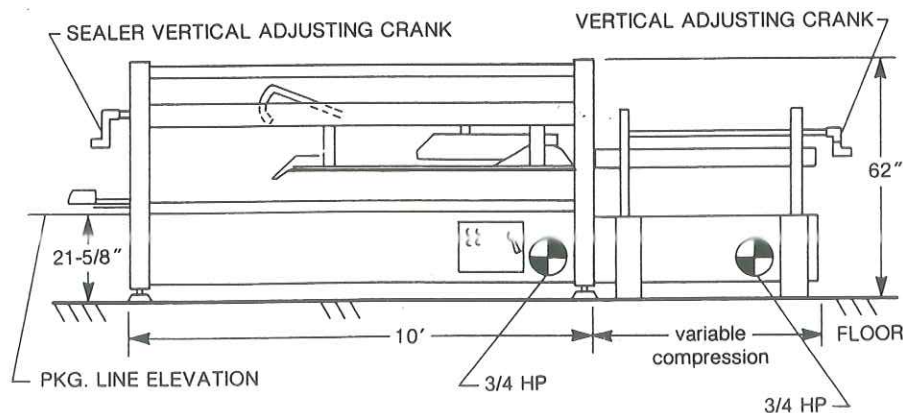
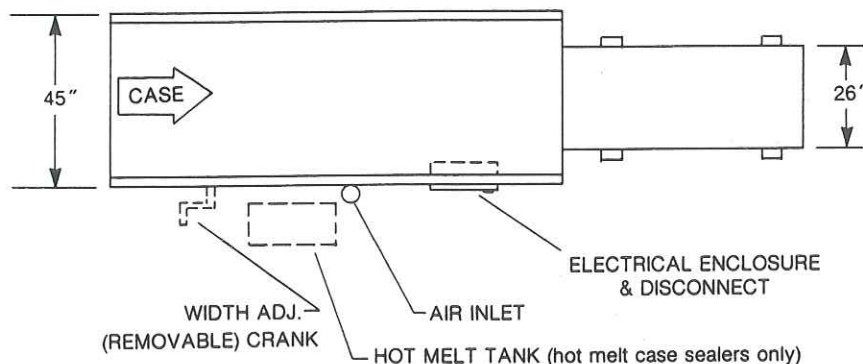


Model 30 TOP & BOTTOM CASE SEALER

CASE RANGE

	L	W	H
MAXIMUM	24"	16"	18"
MINIMUM	8"	6"	4½"

UPPER AND LOWER HORIZONTAL ADJUSTMENT
CAN BE CRANKED FROM EITHER SIDE



Specifications

Electrical:

Low Voltage control circuit
Primary V (208v, 230v, 460v)

Wired to the National Electric Code

Pneumatics:

Air Consumption, .1 Cu. Ft. of Air
per case @ 60 PSI
JIC Air Cylinders
Air Filter, Regulator
Permanently Lubricated Air Cylinder

Adhesive Systems:

A-B-C Pressure Enclosed Cold
Glue System
Hot Melt Systems
Horizontal Inner Flap Application
Snap-On Glue Skip Cams

Mechanical:

Crank Adjustable
Contoured Cast Flap Folders
Powered Infeed Belt
Adjustable Declined Rollers
Sealed Bearings Throughout
Spring Loaded Compression Rollers
Motor Driven Compression Belt

Optional:

Options List Available
direct from A-B-C

SPECIFICATIONS SUBJECT TO CHANGE WITHOUT NOTICE

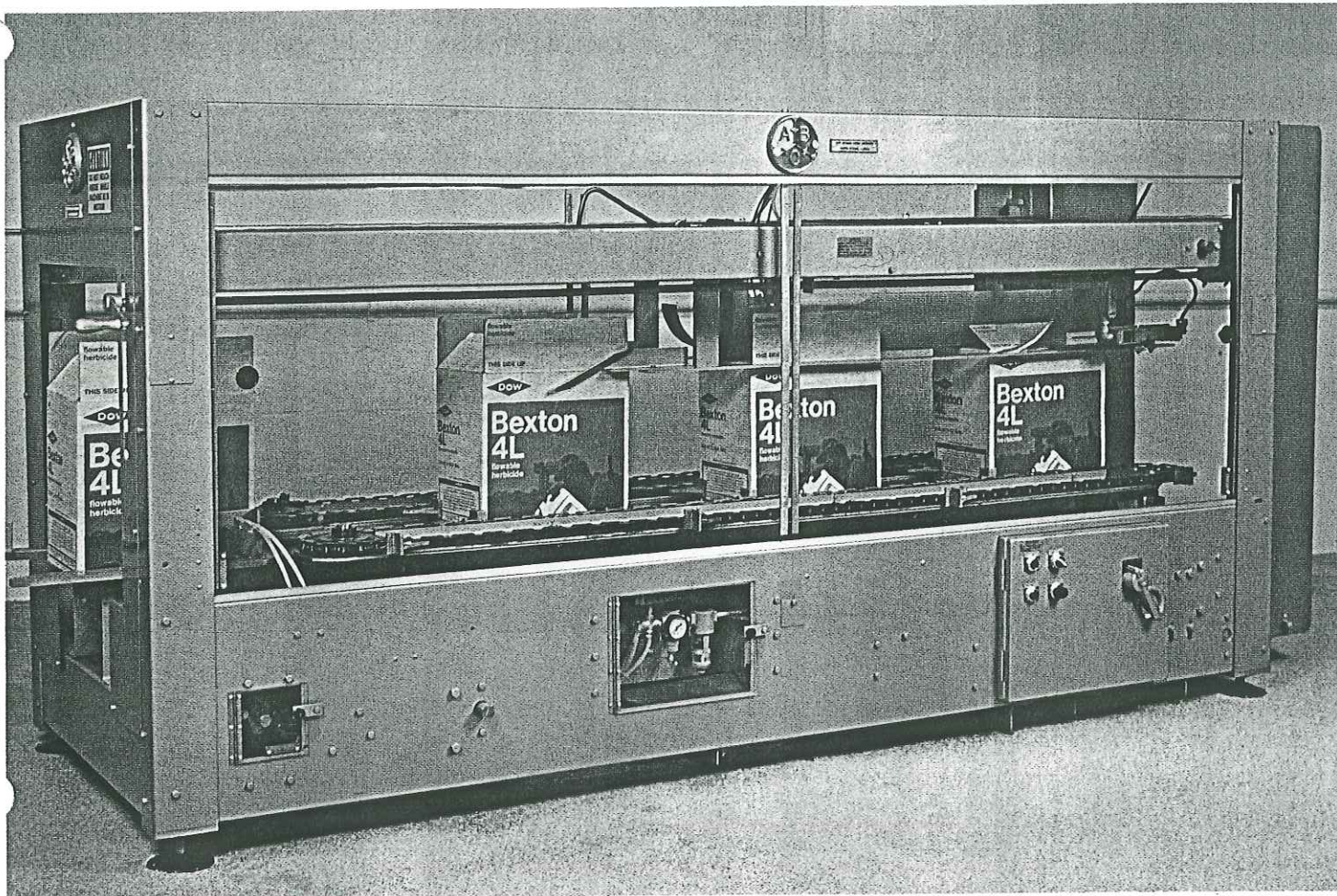


A-B-C Packaging Machine Corporation

811 Live Oak Street, Tarpon Springs, FL 33589 Phone 813/937-5144 Telex 5-2893

AUTOMATIC TOP & BOTTOM CASE SEALER

MODEL 30



A-B-C has been a leader in the manufacture of Case Sealers for forty years. As a responsible concern, we feel the time has come to take a fresh look at the current needs of the industries we serve, and to produce a new machine which totally meets the needs of the 80's. The Model "30" has a new look; but rest assured that the superior quality you expect from A-B-C has not changed. It has in fact, been improved upon! Look for yourself. We think you will agree.

James L. Neal
James L. Neal, President
A-B-C Packaging Machine Corporation



A-B-C PACKAGING MACHINE CORPORATION