

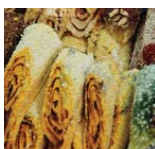


"Packaging Automation Systems"
Boston • Amsterdam • London • Chicago • San Jose • Singapore



innovate.

solve.



imagine.

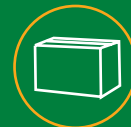


lead.



"A global company to believe in."

Durataper 32FC



automatic case sealers

The new Durataper 32-FC

automatic case sealers are heavy duty, operator friendly, side belt driven machines for uniform cases. Features include the automatic flap with adjustable legs, full lexan guarding and taping heads with open tape feed path. The Durataper 32-FC is available for top and bottom or top only case sealing with tape.

The OKI Group is a leading global supplier of integrated "end of the line" packaging automation systems. Our technology, process optimization and services help our customers achieve their productivity and business goals.



O/K International Corporation O/K Durable Packaging Inc.

73 Bartlett Street
Marlborough, MA 01752 USA
tel: 508.303.8286
fax: 508.303.8207
sales@okcorp.com

5117 Dansher Road
Countryside, IL 60525 USA
tel: 708.387.2253
fax: 708.387.2211
sales@okdurable.com

Technical Specifications for DURATAPER 32FC:

Case range:	6.00" x 5.00" x 5.00" (L x W. x H.) min. 20.00 x 20.00 x 24.00" (L x W. x H.) max.
Case weight:	Up to 50 lbs.
Side belt speed:	60ft./min. (optional 90ft./min.)
Throughput:	Up to 40 cases/min. Case sealers require spacing of 18.00" or more between cases. If this spacing cannot be maintained a separating system will be required.
Finish:	Steel-it painted.
Taping heads:	Blue Max taping heads for 2.00" wide tape.
Side belt motors:	Two 1/6 HP motors.
Power requirements:	110 VAC, 1 Ph, 60Hz, 5.6 Amp. or to requirement.
Side belts:	2.50" wide, self-centering side belts.
Table height:	26.00" - 32.00".
Machine dimensions for 32-FC.	74.00" x 38.00" x 74.00" (L x W x H)
Pneumatic:	45 PSI, 2 CFM

FEATURES

BENEFITS

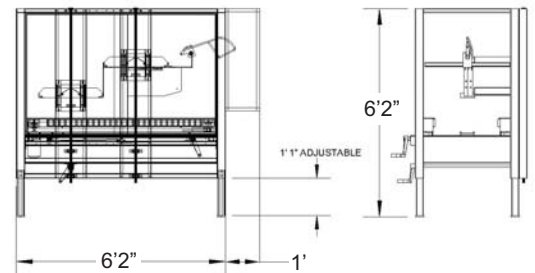
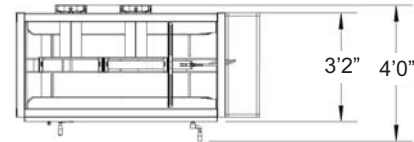
Centralized case adjustments.	Fast & easy size change improves efficiency.
Heavy-duty welded frames.	Durable construction for demanding applications.
Steel-it painted finish.	Resist weather, staining and chemicals.
Full lexan guarding.	Clear guarding provides operator convenience and safety.

The DURATAPER 32FC is usually combined with a Duraformer case erector:



OKCORP.COM

O/K DURABLE PACKAGING, INC.
DURATAPER 32FC
FULLY AUTOMATIC CASE TAPER



DURATAPER 32FC OPTIONS

- Reverse directions.
- Extra case length, width/height.
- Compression wheels.
- Pack tables.
- Exit conveyors.
- Neve 4 wiring.
- Low tape alarm.
- Customer specified finish.
- Casters.
- Full steel roller bed.
- Blue Max taping heads for 3.00"