



15DBC105 Horizontal Load Cartoner



Cost-effective Auto-loader Packed With Versatility

The 15DBC105 is your economical alternative in the ADCO line of automatic - load horizontal cartoners. It is a left-hand load, continuous motion, auto load cartoner with fully adjustable infeed and transfer conveyor pockets. Designed to be easy on the budget, the 15DBC105 machine has an extended size range and variable speed range of 50 to 125 cartons per minute.

Standard features include: 16' (4.88m) stainless steel frame, ADCO 2-head rotary carton feeder, 4' (1.22m) horizontal powered carton hopper, 12" (305mm) flight chain centers, and 80" (2.03m) infeed conveyor. The automatic product inserter features an adjustable overload sensor system with an automatic retract feature. No product/no carton

and no carton/no load features are combined to make this a fully automatic machine.

Closing options consist of pressurized hot melt glue or tuck style closing. Available options include: ADCO deboss coder, low hopper warning light, digital readouts for size changes, and washdown construction.

Special product handling and indexing options are available and can be quoted upon review of the carton and product to be packaged. Machine speeds may vary depending on carton sizes, style, and the products to be handled. Special options are available to further extend the standard carton size range.

FEATURES / SPECIFICATIONS

15DBC105 Horizontal Load Cartoner

STANDARD FEATURES:

- Left hand load construction
- Continuous motion
- 2-head, 8" (200mm) radius rotary carton feeder
- 4' (1.22m) horizontal powered carton hopper
- Automatic barrel cam inserter with retract system
- 80" (2.03m) product infeed conveyor frame
- Fully adjustable product infeed and transfer chains
- No product/No carton and No carton/No load sensing
- PLC Control System with color touch screen
- 16' (4.88m) long, stainless steel main frame
- #2040 non-captured nickel plated flight chains with 12" lug centers
- 2hp variable speed drive system
- Vertical minor flap tuckers

- Screw adjustments on all overheads
- Scales on all adjustments
- NEMA 12 (IP55) electrical enclosures
- 24vdc control voltage
- Main drive overload protection
- Gull wing barrier guarding - electrically interlocked
- Castors for portability and leveling feet

OPTIONS:

- Pressurized hot melt glue system
- Tablock tuck closure
- Low carton hopper warning light
- Digital readouts for size changes
- Mechanical deboss or ink jet coder
- Group lubrication
- Additional product infeed conveyor length
- Washdown construction
- European Model with CE certification and soft metric construction

Features and specifications may differ from model shown.



Standard 4' (1.22m) horizontal powered carton hopper provides greater capacity and faster size changeovers.



Dual shafts on flight chain drive provide quick and easy flight lug adjustments.



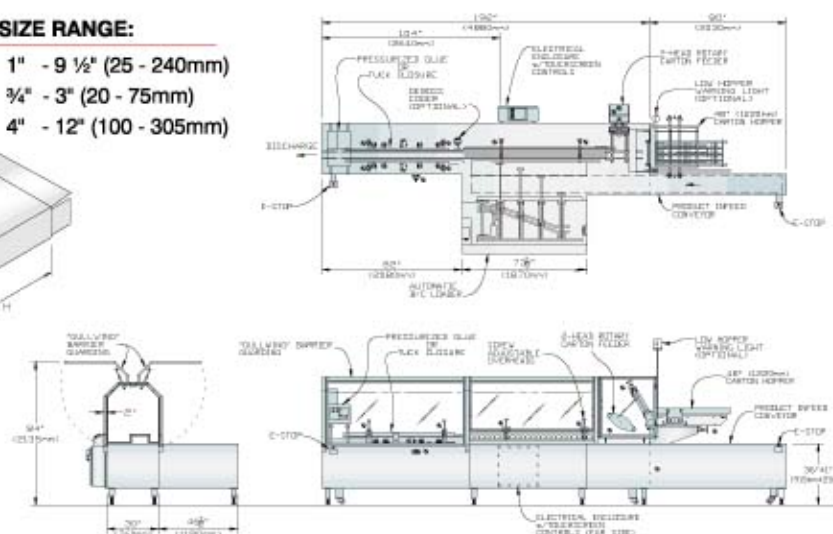
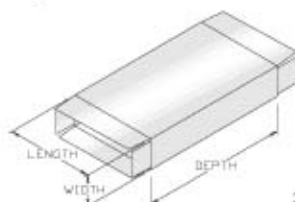
Optional digital readouts on adjustments are used for consistent and faster carton size changeovers.



ADCO deboss coder to imprint the date/batch codes on your cartons.

STANDARD CARTON SIZE RANGE:

Length of opening	1" - 9 1/2" (25 - 240mm)
Width of opening	3/4" - 3" (20 - 75mm)
Depth	4" - 12" (100 - 305mm)



Item/Description	Unit	Order Qty	Quantity	Unit Price	Total Price
ADCO Model: 15DBC105 Automatic Load	Each	1	1	150,504.00	150,504.00
Cartoner, SN: 4787TK. To include the following: Left hand load construction. Continuous motion. BC Automatic barrel cam inserter with retract system. 76 1/2" long product infeed conveyor frame. Fully adjustable product infeed and transfer chains. No product/No carton and No carton/					
Transferred to page 2.....					150,504.00

Item/Description	Unit	Order Qty	Quantity	Unit Price	Total Price
Transferred from page 1.....					150,504.00
No load sensing. Dual shafts on flight					
chain drive for quick and easy flight lug					
adjustments. 4' horizontal powered carton					
hopper 16' long, stainless steel main					
frame. #2040 non-captured aqua coated					
flight chains with 12" flight centers. Upstream					
adjustments on all overheads. Scales					
on all adjustments. Vacuum generator					
Transferred to page 3.....					150,504.00

Item/Description	Unit	Order Qty	Quantity	Unit Price	Total Price
Transferred from page 2.....					150,504.00
Group lubrication. 24vdc control voltage.					
230v/3ph/60hz electrics. Jog cord					
with pushbutton and water tight outlet.					
Gull wing barrier guarding - electrically					
interlocked. Castors for portability and					
leveling feet. Alarm buzzer for start/stop					
of machine with (3) second start delay					
PLC Control System with COLOR touch					
Transferred to page 4.....					150,504.00

Item/Description	Unit	Order Qty	Quantity	Unit Price	Total Price
Transferred from page 3..... screen HMI. Sealing System: Straight tablock					150,504.00
tuck-up closing plows with crank drive					
for one carton width. Special Features:					
60" long conveyor extension. Downstream					
load-side horizontal minor flap tucker.					
3-head rotary carton feeder. Wash-					
down construction.					
Down Payments	Each	-1	-1	75,252.00	-75,252.00
Transferred to page 5.....					75,252.00

- This is a continuous motion machine designed to erect and automatically fill seal end cartons. The proposed machine is equipped with a 136 ½" long lugged infeed conveyor which can be hand with product. As the machine detects the product, the carton feeder vacuum is activated, which picks a carton from the horizontal powered carton hopper and erects it in the flight chains. The product is then inserted into the carton at the Barrel Cam load section of the machine. The carton flaps are folded and closed with a set of crank driven tuck-closing systems. The finished cartons are then discharged from the end of the machine.
- This proposed machine would be supplied with a 3-head rotary carton feeder and would be set for a mechanical rate of 150 cartons per minute maximum. However, we highly recommend that the normal maximum running speed should be no more than 125 cartons per minute.
- Please note that this proposal includes washdown construction. Also note the 60" infeed conveyor extension would be the maximum extension allowed on this machine due to the drive system. In addition, due to the special features within this quote, the selling price is \$150,504 with a machine order received by ADCO no later than end of work, Friday March 10, 2006.

ADCO MODEL: 15DBC105 AUTOMATIC LOAD CARTONER WITH:

- Left hand load construction
- Continuous motion
- BC Automatic barrel cam inserter with retract system
- 76 ½" long product infeed conveyor frame
- Fully adjustable product infeed and transfer chains
- No product/No carton and No carton/No load sensing
- Dual shafts on flight chain drive for quick and easy flight lug adjustments
- 4' (1.22m) horizontal powered carton hopper
- 16' (4.88m) long, stainless steel main frame
- #2040 non-captured aqua coated flight chains with 12" flight centers
- Upstream non-loadside horizontal minor flap tucker
- Screw adjustments on all overheads
- Scales on all adjustments
- Vacuum generator (Requires 95psi. @ 10cfm)
- Group Lubrication
- 24vdc control voltage
- 230v/3ph/60hz electrics
- Jog cord with pushbutton and water tight outlet
- Gull wing barrier guarding - electrically interlocked
- Castors for portability and leveling feet
- Alarm buzzer for start/stop of machine with (3) second start delay
- PLC Control System with COLOR touch screen HMI (*programming software optional*)

SEALING SYSTEM:

- Straight tablock tuck closing plows with crank drive for one carton width

SPECIAL FEATURES:

- 60" long conveyor extension (136 ½" total overall length, 120 ½" useable length)
- Downstream load-side horizontal minor flap tucker
- 3-head rotary carton feeder
- Washdown construction to include:
 - NEMA 4x electricals
 - Hard anodized aluminum
 - Aqua chain
 - Stainless steel sprockets
 - Stainless steel bearings with plastic housings*
 - ¼" bearing standoffs for cleaning*
 - Push button covers
 - Continuous welds throughout*
 - No nickel plated components*
 - 1 ½" diameter drainage holes in all horizontal surfaces
 - **NOTE: Every effort will be made to accommodate these features; however there are certain components and/or areas of the machine that do not permit their use.*

TOTAL MACHINE PRICE

\$150,504

Please note that this reduced total machine price requires that ADCO receive a machine order no later than end of work, Friday March 10, 2006.

PRODUCT:

Rectangular and Round Pizza

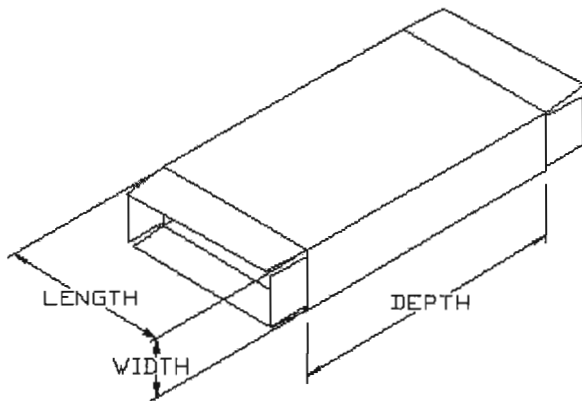
CARTON SIZES:

4" x 1 3/8" x 6"

5" x 1 3/8" x 6"

CARTON SIZE RANGE:

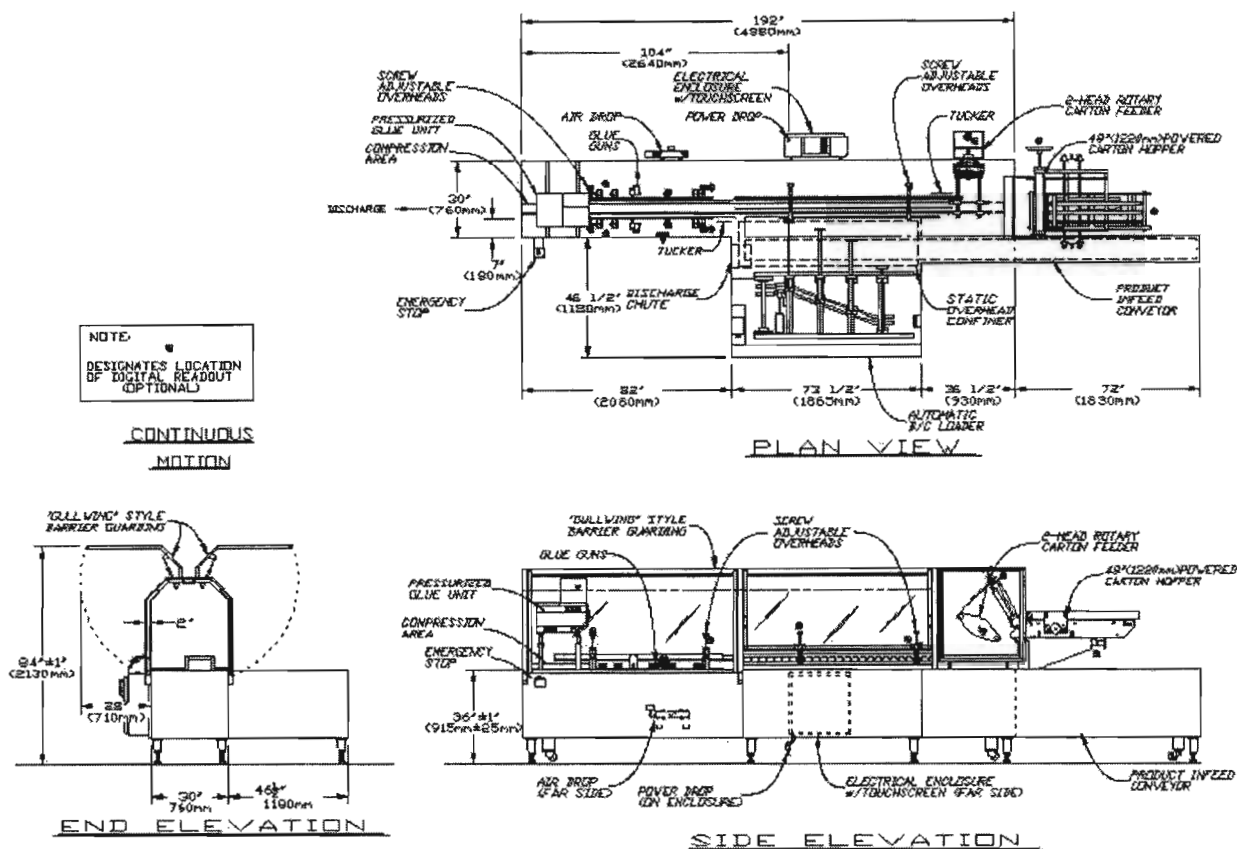
Dimension:	Min (in)	Max (in)		Min (mm)	Max (mm)
Length of Opening:	1	9 1/2		25	240
Width of Opening:	3/4	3		20	75
Carton Depth:	4	12		100	305



CARTON STYLE:

Horizontal end load with straight tuck style flaps.

GENERIC MACHINE LAYOUT (Note 136 1/2" total infeed conveyor length):



NOTE: This layout drawing is general and does not display any special features that may be specified in this quotation. The dimensions on this layout are approximate and are for general layout purposes only! For a more accurate layout, please contact your ADCO Sales Representative.

MACHINE SPEED:

Variable from 25 to 125 cartons per minute maximum (maximum mechanical running speed: 150 cartons per minute) - Actual maximum speed may vary depending on board type, weight, density and scoring.

STANDARD COMPONENTS:

Component	Supplier
Air Cylinders	Aro / Bimba / PHD
Bearings	FYH / IPTCI / MRC / Hub City / SKF / McGill
Belts	Gates / F.N. Sheppard / C.I.R.
Chain	Tsubaki / UNI / Rainbow
Circuit Breakers	Allen Bradley 1492
Clutches	Browning / Horton
Control Panel Arm	Hoffman
Couplings	Ruland / Zero-Max
Decelerators	Enidine
Digital Readouts	Siko
Enclosure / Panel	Hoffman
Air Filter / Regulator / Lubricator	ARO
Fittings	SMC / Festo
Fuses	Littlefuse
Gear Reducers	Nord Gear / Hub City
Hardened Shaft	Thompson
Hot Melt Units	Nordson
Jack Screws	Generic allthread & ACME shaft
Knobs / Handwheels	Solus / ADCO
Light Emitting Sensors	Efector
Main Flange Disconnect	Allen Bradley
Miniature Motor & Gear Motors	Panasonic
Motors	Baldor / Reliance / SEW
Overload Relays	Allen Bradley 193
Power Supply 24V	Astrodyne
Programmable Controller	Allen Bradley
Proximity Switch – Inductive	Efector
Regenerative Blowers	Siemens (Airtech)
Relays, Miniature	Allen Bradley 700HK
Rod Ends / Cam Followers	Aurora / McGill / Carter
Rotation device	Parker Rot. Cylinder
Servo Amplifiers	Allen Bradley Ultra 3000 / Ultra 5000 / Kenitrics 6000
Servo Controllers	Allen Bradley device Net / Control Logix / Discreet I/O
Servo Motors	Allen Bradley MPC 1326
Shaft Locking Device	Trantorque / Martin / Browning
Shielded Cable	Foil Shielded Control cable / Olflex VFD cable
Solenoid Valves	MAC / Numatics
Sprockets	Martin / UST / Generic
Starters	Allen Bradley (100c) IEC
Switches & Pilots	Allen Bradley 800H
Terminals	DINnector
Transformers	Jefferson
Vacuum Cups	PIAB
Vacuum Generators	Vacube
Variable Speed Drives	AC Tech
Wire – Interior of Panel	MTW 18 gage / I/O wire 22 gage
Wire – External of Panel	Copper THHN 14 to 16 gage
Wireways	ADCO