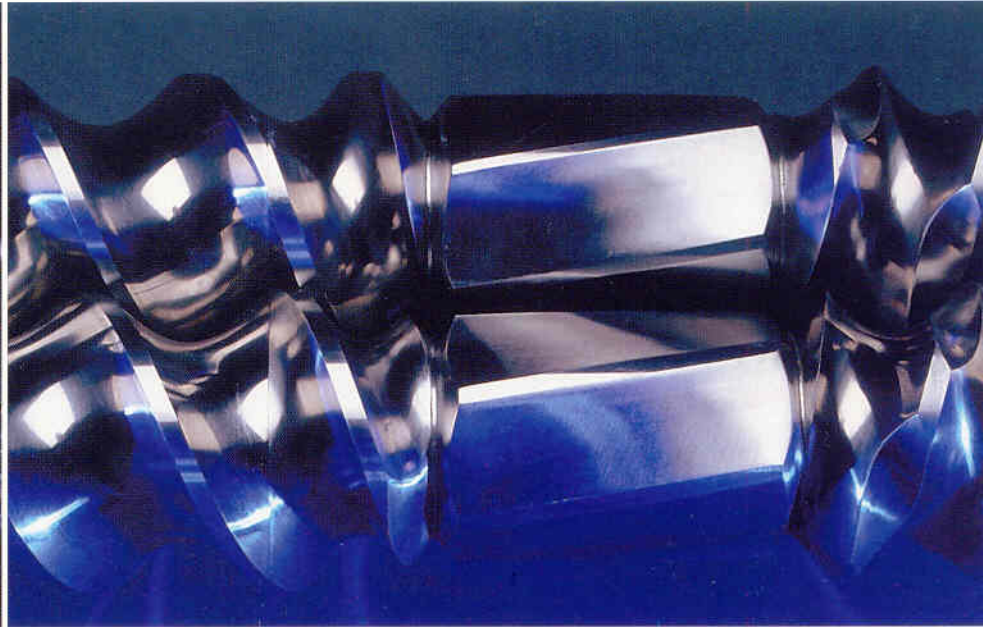
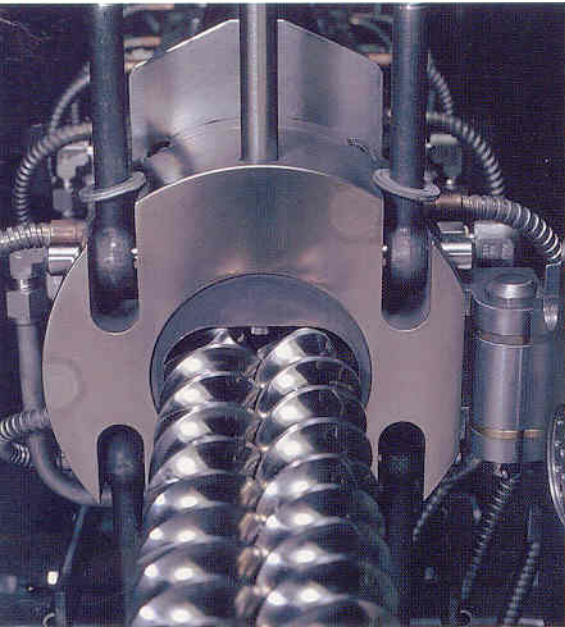


FARREL

A faint, light-gray technical drawing of a screw cross-section is visible in the background of the lower half of the page. It shows concentric circles, radial lines, and several small circles with plus signs, representing a detailed engineering plan.

**FTX™ Twin-Screw
Extruder**

FARREL

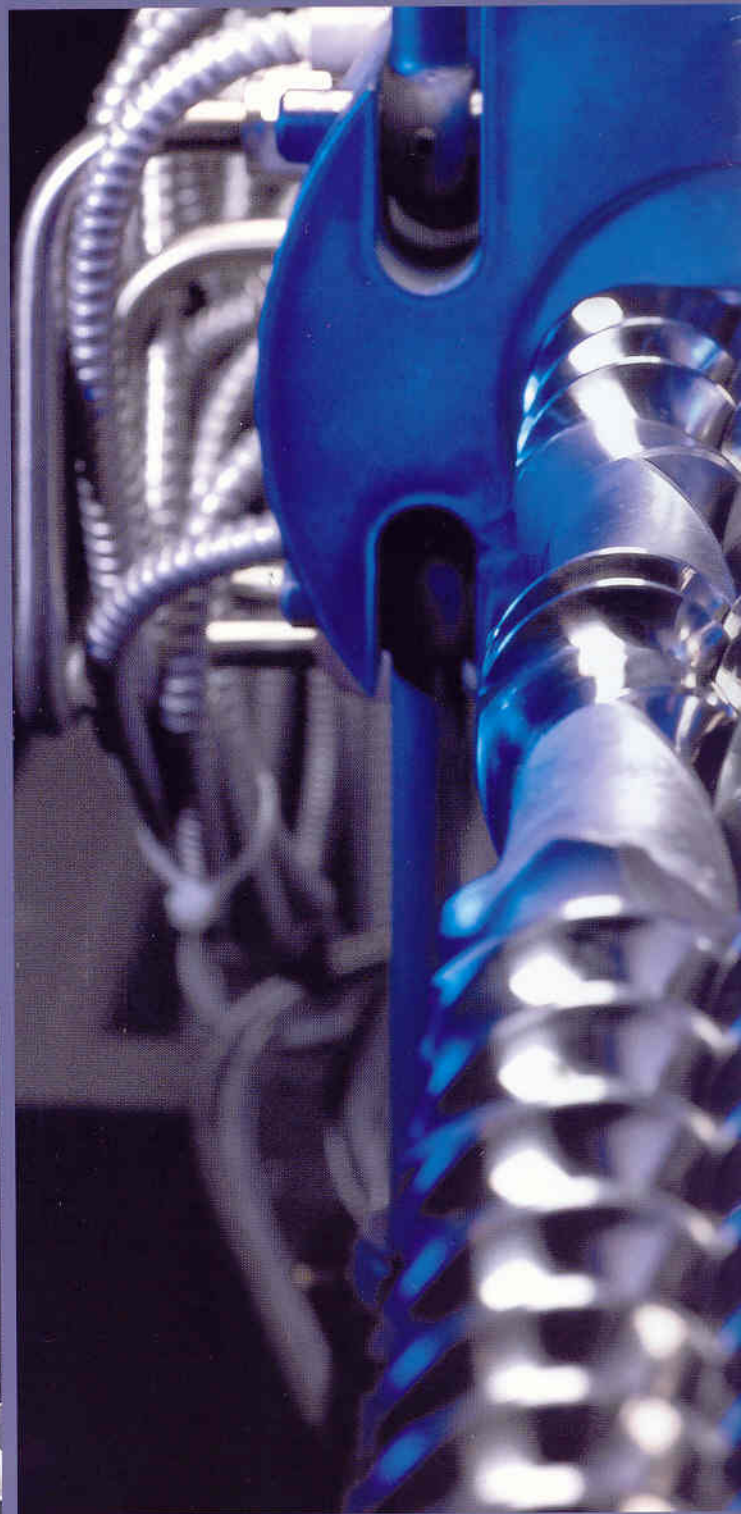
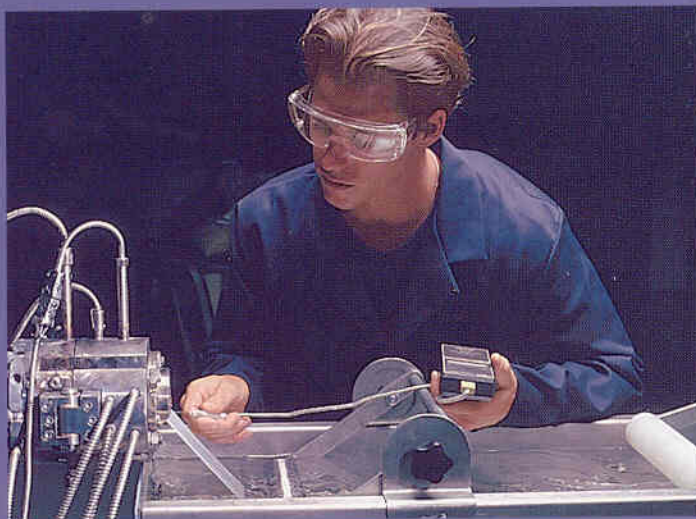
The Farrel

Farrel applies an advanced technological base, research and development, and unparalleled application knowledge and experience to provide high quality and cost-effective polymer processing equipment, systems, and service.

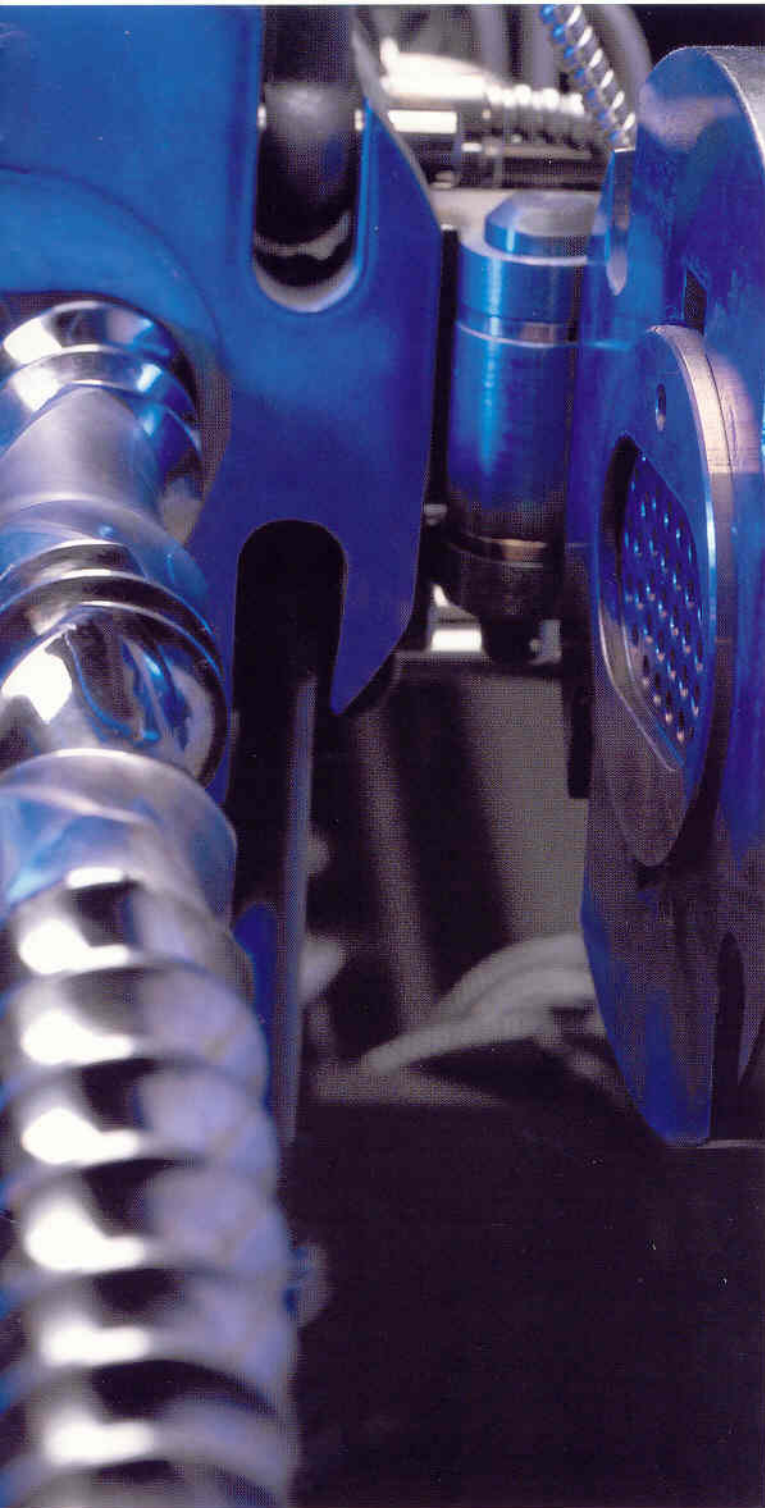
Building continuously on a reputation for invention and innovation, which began with the creation of the compounding industry's standard-setting Banbury Mixer, Farrel breaks ground with a new generation of high-performance polymer processors, delivering significant application diversity, flexibility, and operational efficiency.

Farrel, with this complement, is the **Single Source Solution**: the company providing customized solutions for the processing of today's broad range of polymers.

Farrel maintains operations across four continents, serving customers in numerous industries in over 50 countries. These customers benefit enormously from Farrel's commitment to the understanding and servicing of their processing requirements, and have come to recognize Farrel as an integral partner in their processing operations.



FTX™ Twin-Screw Extruder



The FTX Twin-Screw Extruder effectively converts a wide range of raw plastics into custom-made compounds ready for final product applications.

The FTX's capabilities include:

- Conversion of powder into pellets
- Incorporation of mineral and glass fiber reinforcement agents
- Addition of lubricants, flame retardants, fillers, and functional additives
- Reactive extrusion and high-temperature engineering resin compounding
- Processing of blends and alloys
- Dispersion of organic and inorganic pigments
- Removal of volatile contaminants

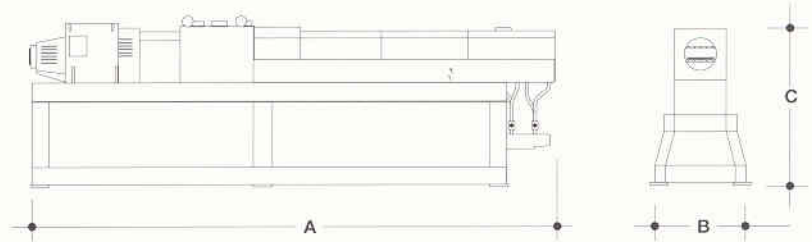
Due to advanced mechanical design and unique processing elements — the Polygon and the Continuous Mixing Element — one screw configuration in one high-torque machine is able to perform both high- and low-speed compounding with reduced energy input. The results are application versatility and process quality and mastery.

The FTX is readily adaptable to downstream pelletizing, calender feeding, and forming equipment.

Application Data

Twin-screw extruder type		FTX 20	FTX 80	FTX 80H	FTX 500	FTX 500H	FTX 1500	FTX 1500H
material	application	Production rate in kg/h						
HDPE, LDPE, LLDPE, PP	Compounding, Coloring	to 25	50-125	120-300	250-600	1000-2400	800-2000	2000-5000
ABS, SAN, PS Coloring	Compounding,	to 20	50-100	120-240	200-500	800-2000	675-1600	1688-4000
PC, PA6, PA6.6, PET, PBT, POM	Compounding, Coloring	to 20	40-80	96-192	200-500	800-2000	675-1600	1688-4000
PA6,PA6.6, PC, Polyolefins	Fiber Glass Filled	to 20	40-90	96-216	300-500	1200-2000	800-1600	2000-4000
	Mineral Filled	to 20	50-100	120-240	200-600	800-2400	675-2000	1688-5000
Masterbatch	Inorganic (to 80%)	to 30	80-150	192-360	400-700	1600-2800	1200-2300	3000-5750
	Organic (to 30%)	to 20	30-80	72-192	200-450	800-1800	500-1200	1250-3000
	Additive (to 20%)	to 20	50-100	120-240	250-600	1000-2400	700-2000	1750-5000

- All production rates should be factory verified.



Technical Data

Twin-screw extruder type		FTX 20	FTX 80	FTX 80H	FTX 500	FTX 500H	FTX 1500	FTX 1500H
Bore diameter		22.5mm	37mm	37mm	68mm	68mm	95mm	95mm
Maximum installed power	kw	4	18	45	110	450	400	1000
	hp	5	25	60	150	600	500	1250
Maximum screw speed	rpm	500	500/700	1000	450/515	1000	500/600	1000
Weight	kg	350	1640	1968	3400	4080	11000	13200
	lb	770	3608	4330	7500	9000	24200	29040
Length – “A”	mm	1400	2850	3135	4650	5115	7135	7849
	in	55	60.5	130	143	157	282	310
Width – “B”	mm	640	660	660	825	825	1525	1525
	in	25	26	26	33	33	60	60
Height – “C”	mm	720	1250	1250	1400	1400	1530	1530
	in	28	50	50	56	56	61	61

- The dimensions are based on 28 L/D for all models. For all other configurations consult factory.
- All models have a centerline level of 1067mm (42 in).
- FTX 20 is bench-mounted.

FARREL

Knowledge, experience, service and the most comprehensive line of polymer processing equipment are applied to customer productivity and satisfaction.

Farrel provides the Single Source Solution with an entire line of compound processing equipment, customer support and process engineering services.

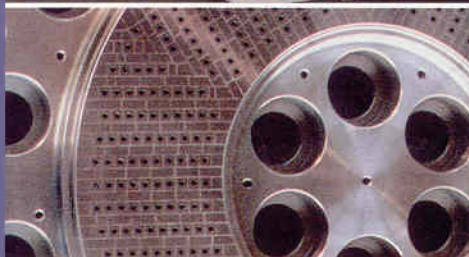
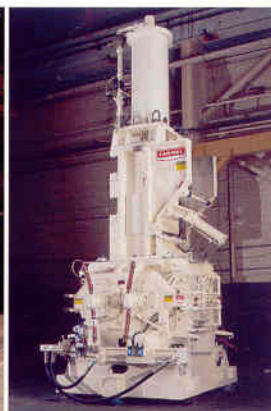
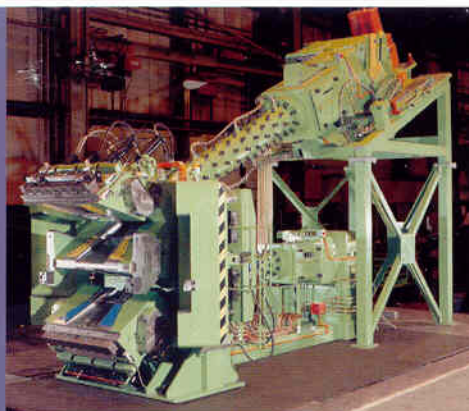
Principal Products

Banbury Mixers
Intermix Mixers
Calenders
CP Compact Processors
FCM Continuous Mixers
FTX Twin-Screw Extruders
Rubber and Plastic Hot and Cold Feed Extruders
Gear Pumps
Mills
MVX Continuous Mixers
Pelletizers
Tecnolab Laboratory Processors
Twin Screw Sheeters

Trademarks

BANBURY®
CARD®
CP-SERIES II™
ECO-GLAND™
FARREL®
FTX™
INTERMIX®
MVX™
QUICK DISCONNECT®
RPI SYSTEM™
ST™
TECNOLAB®

Farrel Corporation has secured ISO 9001 registration in the United States and the United Kingdom.



North America

Farrel Corporation

25 Main Street
Ansonia, CT 06401

Tel: +1 (203) 736 5500
Fax: +1 (203) 735 6267

Asia Pacific

Farrel Asia Ltd.

2 Pioneer Sector 3
Jurong, Singapore 628341
Republic of Singapore

Tel: +65 862 2877
Fax: +65 861 9123

Europe

Farrel Ltd.

Farrel Shaw Ltd.

Queensway, Castleton
P.O. Box 27 Rochdale
Lancashire, OL11 2PF
United Kingdom

Tel: +44 (0) 1706 647 434
Fax: +44 (0) 1706 638 982

www.farrel.com

support@farrel.com