

piFLOW[®]p



- Compact and modular design.
- Rubber and plastic materials in conveyor are antistatic.
- COAX[®] technology.
- Energy efficient and low noise level.
- Easy to maintain and clean.
- The conveyor is designed according to USDA guidelines.
- Designed mainly for industries handling food, chemical and pharmaceutical products.
- Steel quality ASTM 316L.
- Solution that contributes to dust-free conveying.
- The filter bag has filtration 5 µm.
- Automatic filter cleaning.
- All material in direct contact with the conveyed product is in compliance with FDA and EC No. 1935/2004, EC No. 10/2011.

TECHNICAL DATA

Technical data

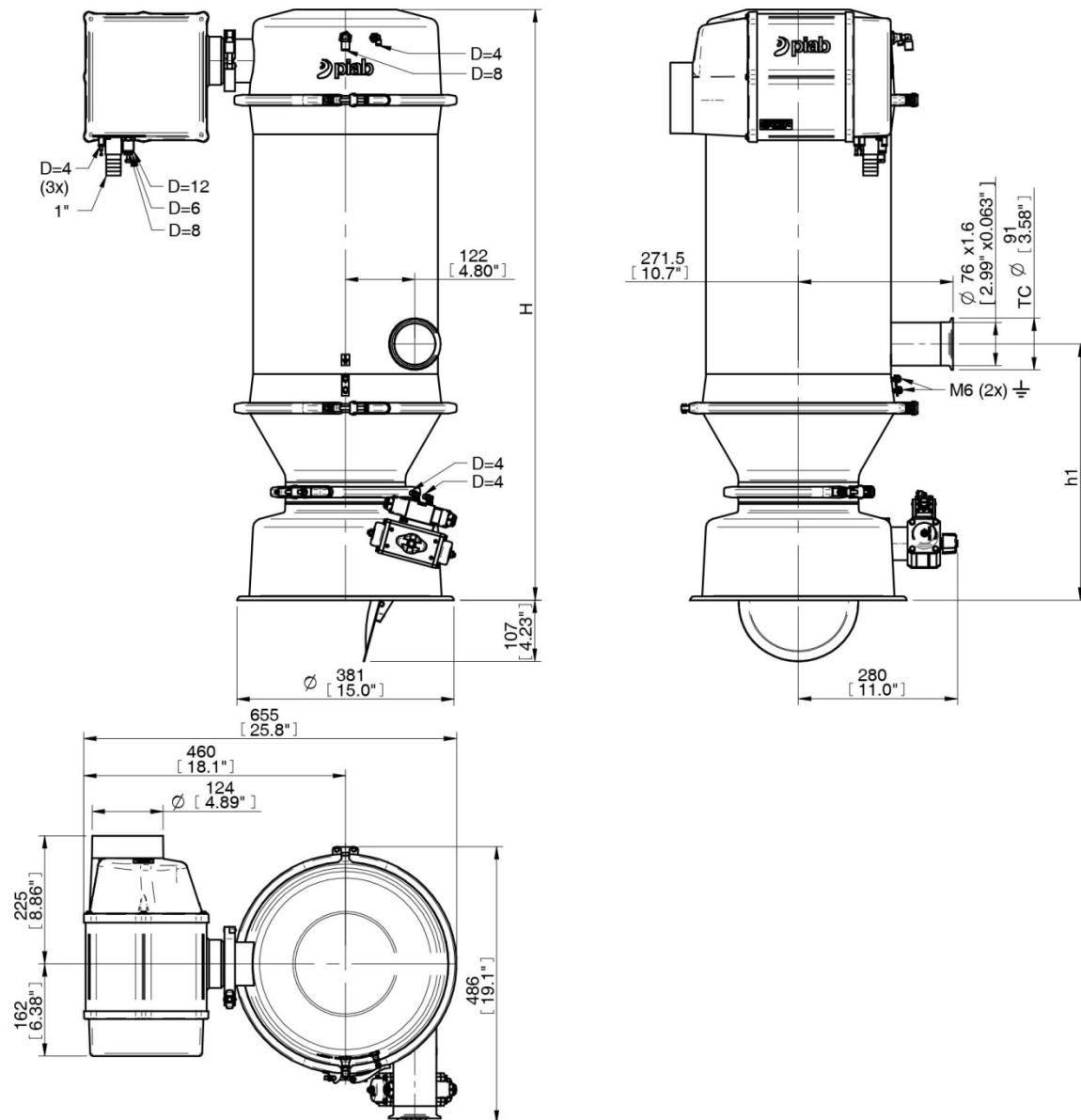
Description	Unit	Value
Material		ASTM 316L, EPDM, NBR, ePTFE, PET, PA, AI, SS, PP
Temperature range – conveyed material	°F	32 - 140
Temperature range - ambient	°F	41 - 122
Weight	lb	94
Finish – general surface	Ra	0.6
Finish – product contact surface	Ra	0.4
Feed pressure, max.	psi	101.5
Feed pressure range	psi	58-87
Air consumption range	scfm	84.4-118.2
Noise level range	dBA	69-77
Vacuum range	-inHg	18-22.2
Filter area	ft²	4.53
Min particle size	µm	5.0
Material batch volume	cf	0.49
Feed pressure, max. - actuator	psi	58
Feed pressure range - control	psi	58-87
Safety classification		IP54

Vacuum flow

Feed pressure	Air consumption	Vacuum flow (scfm) at different vacuum levels (-inHg)								Max vacuum
psi	scfm	0	3	6	9	12	15	18	21	-inHg
58.0	84.7	333	184	129	81.4	54.2	27.1	6.78	-	17.8
72.5	102	354	208	149	94.9	57.6	42.0	23.7	12.2	20.7
87.0	119	360	225	176	115	61.0	40.7	33.9	23.7	22.2

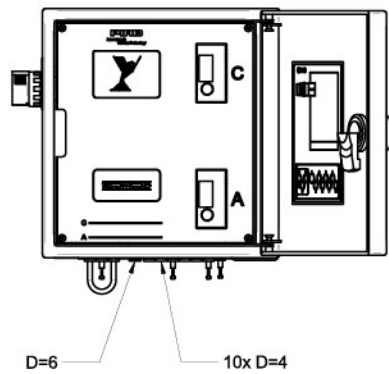
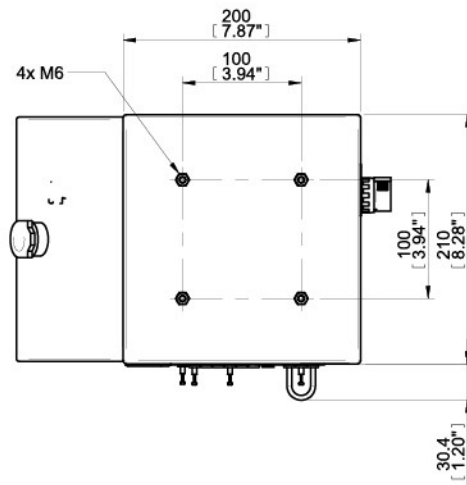
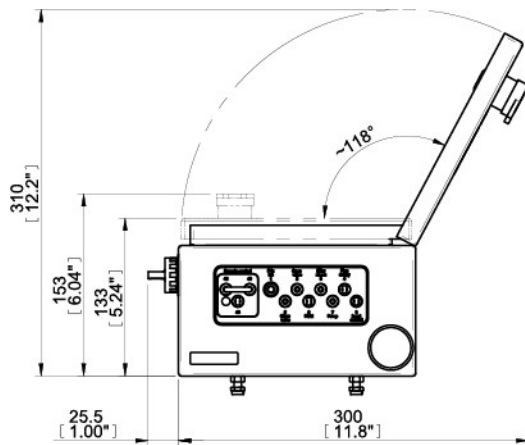
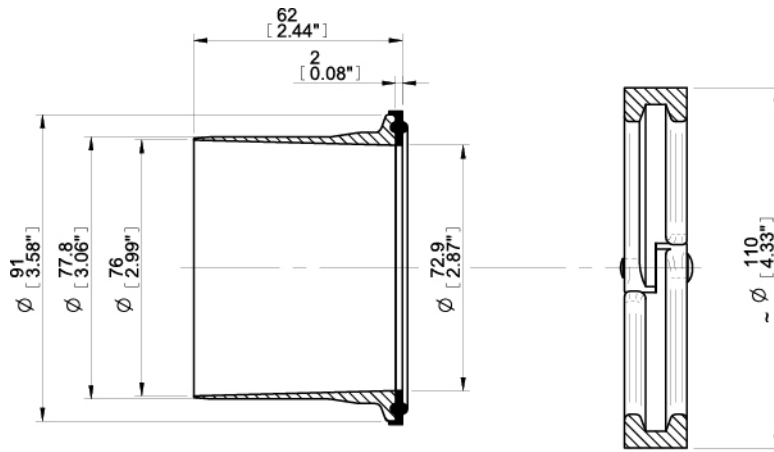
DIMENSIONS

Vacuum conveyor



H	1038 [40.87"]
---	---------------

h1	450 [17.72"]
----	--------------



Ordering information

Description	Product code
piFLOW®p, Standard, piPREMIUM800, Textile filter 04, Hose Inlet Ø 76 (3"), Volume 14L (0.49 ft³), Cone opening, Pneumatic controller CU-1B, Antistatic & SS, No special documentation, Manual US	P.P80L.TX4.76.14.CA.1B.ASS.0.US.0

Ordering information, recommended spare parts

Description	Item no
Textile filter D=125 L=360	0205585
Filter seal 125 NBR	0206440
Module filter plate seal 33 NBR	0206436
Module filter plate seal 21 NBR	0206434
Module seal 33 NBR	0206435
Bottom valve seal 180 NBR	0206439