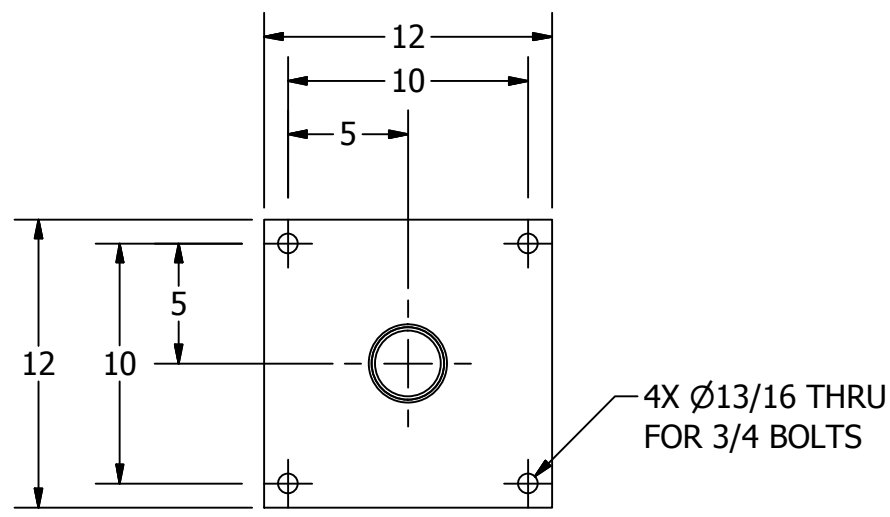
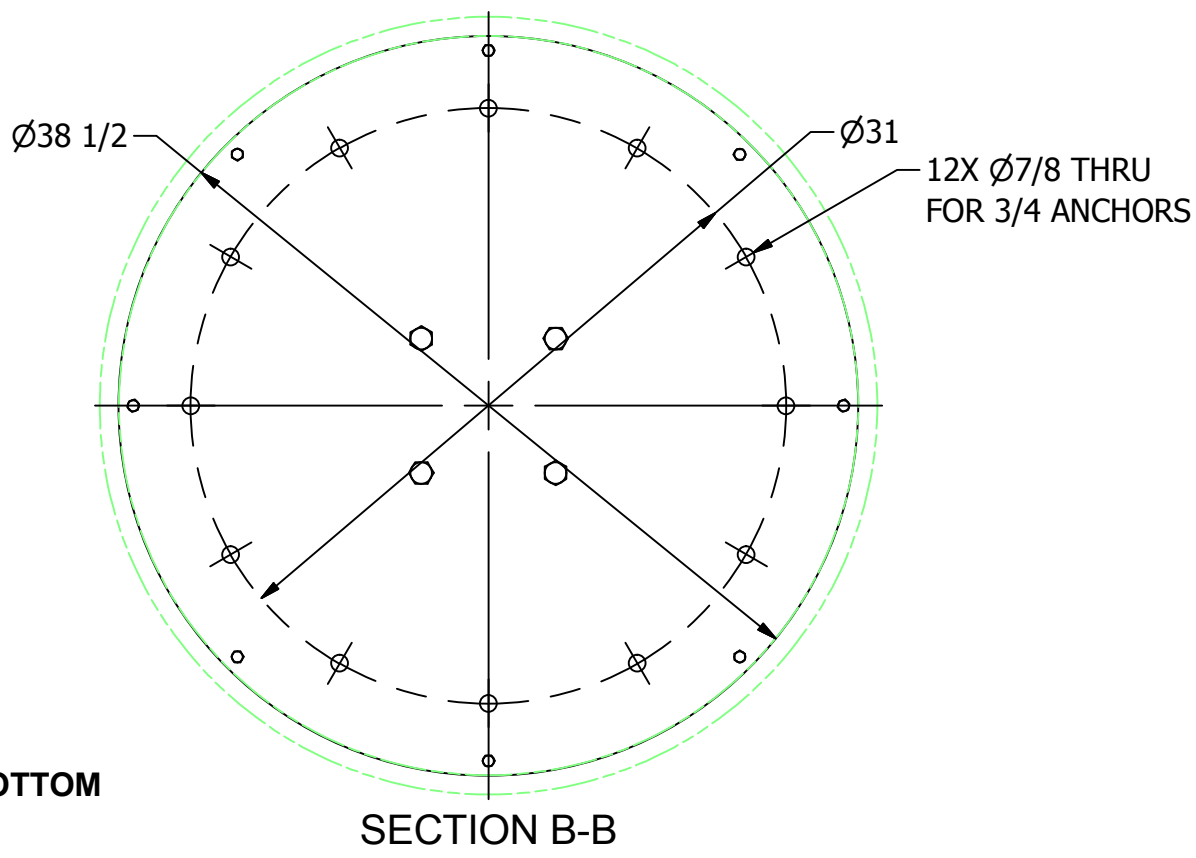


BASE PLATE LOADS	
VERTICAL LOAD	7817 LBS
X MOMENT	1303 FT-LBS
Y MOMENT	1303 FT-LBS

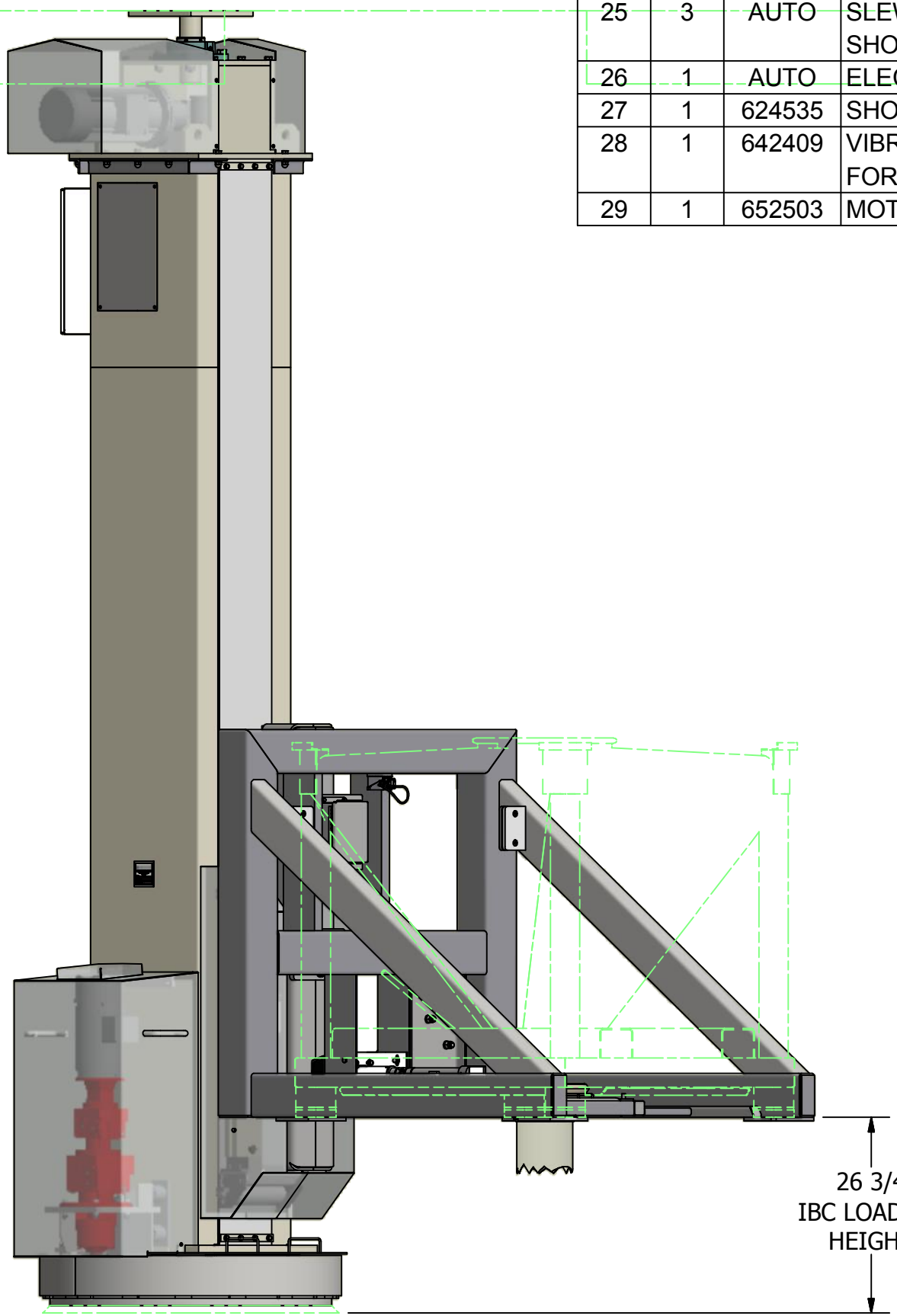


NOTE:  
LIFT MUST BE ANCHORED TOP AND BOTTOM




**SPECIFICATIONS:**  
**CAPACITY:** 2200 LB (BIN & PRODUCT)  
MANUFACTURE TO ACCEPT CUSTOMER'S BINS AND  
CPS #610943  
**MATERIALS:**  
COLUMN- SS304  
RECIEVER- SS304  
LIFT CARRIAGE- SS304  
LIFT DRIVE- SS304  
**ELECTRICAL:**  
UTILITY POWER - 460VAC/3PH, CONTROL VOLTAGE -  
24VDC  
PANELS ARE ULC LISTED  
**PNEUMATICS**  
80 PSI, 5 SCFM  
**SPEEDS:**  
VERTICAL TRAVEL SPEED - 8 FT/MIN  
SLEW SPEED - 1 RPM  
**WEIGHT:**  
THE SHIPPING WEIGHT OF THIS ASSEMBLY IS  
APPROXIMATELY 9,000 LBS  
RECEIVER - 1070 LBS  
COLUMN - 4600 LBS  
DOWNSPOUT WEIGHT - 75 LBS  
IBC EMPTY WEIGHT - 530 LBS  
PRODUCT - 1670 LBS.  
TOTAL IBC AND PRODUCT - 2200 LBS  
**REACTION LOAD:**  
TOP PLATE REACTION SHEAR LOAD IN X AND Y  
DIRECTION (DEAD + LIVE + DYNAMIC) = 1360 LBS  
(DEFLECTION OF SUPPORT STRUCTURE IS  
RECOMMENDED TO BE LESS THAN 1/8")  
BOTTOM PLATE REACTION SHEAR LOAD IN X AND  
Y DIRECTION (DEAD + LIVE + DYNAMIC) = 1360 LBS

- THE OITs ARE SHIPPED LOOSE TO BE REMOTE  
MOUNTED.



ISOMETRIC VIEW

		Parts List		FINISH	/FINISH
ITEM	QTY	PART No	DESCRIPTION		
1	1	624525	COLUMN DETAILS		
2	1	624526	LIFT CARRIAGE DETAILS		
3	1	624527	TOP PLATE DETAILS		
4	1	624528	PLATFORM DETAILS		
5	1	624529	VALVE ACTUATOR ASSEMBLY		
6	1	624530	SLEW BASE DETAILS		
7	1	624531	LIFT DRIVE COVER DETAILS		
8	1	624532	SLEW COVER ASSEMBLY		
9	1	624533	SLOT BELT COVER DETAILS		
10	1	624534	RECEIVER MOUNTING ADAPTOR		
11	1	621353S	TOP SLEW SHAFT ASSEMBLY		
12	1	623019S	SLEW DRIVE MOUNT ASSY		
13	1	570402	TAG,SS304,DATA,.075, F/EQUIP		
14	1	646829	BELT,STAINLESS,10.125" WIDE		
15	1	545902	BEARING,4 BOLT FLG,3"BR,		
16	1	570253	BRG,2-BOLT FLANGE,25mm BORE (NOT SHOWN)		
17	2	644528	BRG,PB,3/4" BORE,POLYMER HOUSED (NOT SHOWN)		
18	1	651763	ACTUATOR,BALL SCREW,3 HP. (NOT SHOWN)		
19	1	646587	GEAR REDUCER,319:1R,56C-FACE		
20	0		(OMITTED) 1/4 HP MOTOR		
21	1	647813	WHEEL,FRICTION,4" DIA x 2" WD		
22	1	AUTO	ENCODER (NOT SHOWN)		
23	1	650937	CABLE,CARRIER,#KS300-5.4 (NOT SHOWN)		
24	1	AUTO	SAFETY INTERLOCK SWITCH (NOT SHOWN)		
25	3	AUTO	SLEW POSITION PROXIMITY SWITCH (NOT SHOWN)		
26	1	AUTO	ELECTRICAL ENCLOSURE,20" x 16" x 6"		
27	1	624535	SHORT SPOUT ASSEMBLY		
28	1	642409	VIBRATOR,ELECTRIC,NON-VENT,50-1100 LBS FORCE		
29	1	652503	MOTOR,BRAKE,1/2 HP,1765 RPM,460V/3PH/60HZ		

**CUSTOM POWDER SYSTEMS.**  
THE CONTAINMENT COMPANY  
2715 N. AIRPORT COMMERCE SPRINGFIELD, MISSOURI 65803  
PH (417) 868-8002 FAX (417) 868-8316  
WWW.CUSTOM-POWDER.COM  
MADE IN USA

DATE: \_\_\_\_\_

MODEL NO: 611041


SERIAL NO. 7631-SN-001 (Thru -1)

CUSTOMER ID 272313

WT. CAPACITY \_\_\_\_\_

MATERIAL FINISH	
PRODUCT CONTACT	35 UIN RA
NON PROD CONT VISIBLE	35 UIN RA
NON PROD CONT NON-VISIBLE	2B/MILL

WELD FINISH	
PRODUCT CONTACT	35 UIN RA STRIP GRIND FLUSH
NON PROD CONT VISIBLE	STRIP BUFF
NON PROD CONT NON-VISIBLE	BUFF

**CUSTOM POWDER SYSTEMS.**  
THE CONTAINMENT COMPANY  
2715 N. AIRPORT COMMERCE SPRINGFIELD, MISSOURI 65803 PH (417) 868-8002 FAX (417) 868-8316

THIS DRAWING CONTAINS INFORMATION PROPRIETARY TO CUSTOM POWDER SYSTEMS LLC. IT IS SUBMITTED IN CONFIDENCE AND IS TO BE USED SOLELY FOR THE PURPOSES FOR WHICH IT IS FURNISHED AND RETURNED UPON REQUEST. THIS DRAWING AND SUCH INFORMATION IS NOT TO BE REPRODUCED, TRANSMITTED, DISCLOSED OR USED OTHERWISE IN WHOLE OR IN PART WITHOUT THE WRITTEN AUTHORIZATION OF CUSTOM POWDER SYSTEMS LLC.

FRACTIONS 0 TO 24" = ± 1/16"  
24" TO 48" = ± 1/8"  
48" TO 72" = ± 3/16"  
OVER 72" = ± 1/4"

DECIMALS X ± .030  
XX ± .015  
XXX ± .005

ANGLES ± 1/2°  
ALL DIMENSIONS IN INCHES UNLESS OTHERWISE STATED.

WORKING TOLERANCE UNLESS OTHERWISE SPECIFIED (@75°F)

TITLE  
COLUMN LIFT  
GENERAL ASSEMBLY

NO RECD. 1  
WORK ORDER NO. 7631  
PURCHASE ORDER NO. 272313

DRAFTER RC  
DESIGNER RC  
DATE DRAWN 12/16/2015  
SALES ORDER 18257  
ENGINEER AQ

DRAWING NO. 611041

REVISION LEVEL 00

00	VB	5/31/2016	AS-BUILT	
D	RC	4/28/2016	REPLACED ITEM 20 WITH ITEM 29	
C	RC	3/16/2016	ITEM 19 WAS #646640, ITEM 20 WAS #642048	
B	SFS	03/08/2016	ADDED ITEM #28 TO ASSEMBLY	
A	SFS	03/01/2016	RELEASED FOR FABRICATION	
0	RC	1/7/2016	RELEASE FOR CUSTOMER APPROVAL	
REV	BY	DATE	DESCRIPTION	CO#
REVISION HISTORY				
CODE	INVENTOR 2015	DO NOT SCALE DRAWING	FILE NUMBER	611041.idw