

Ellis Corporation
1400 W. Bryn Mawr Ave.
Itasca, IL 60143

MODEL No. **DAF-20** SERIAL No. **94072-00**

MAXIMUM CAPACITY
28 GPM

VOLTAGE **480** PHASE **3** FREQ. **60**

FLA

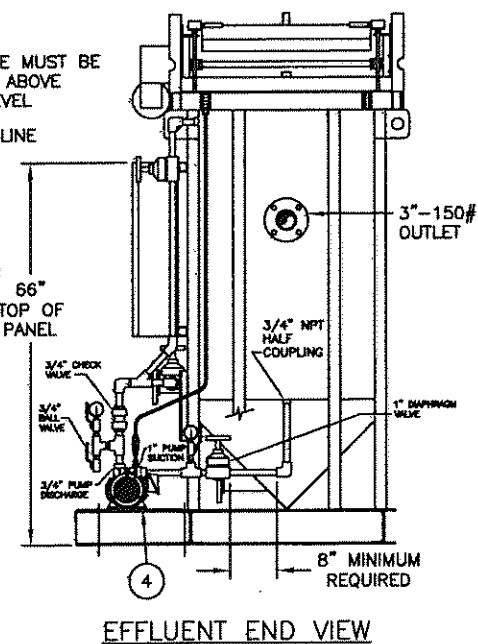
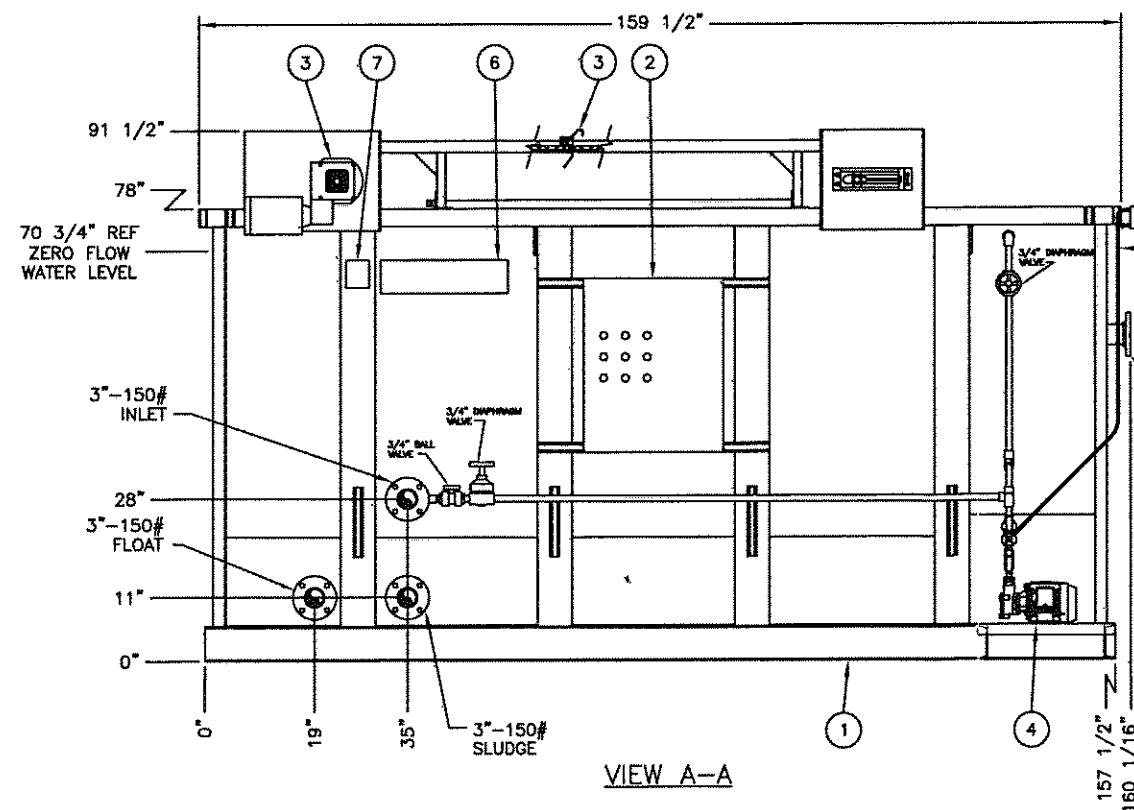
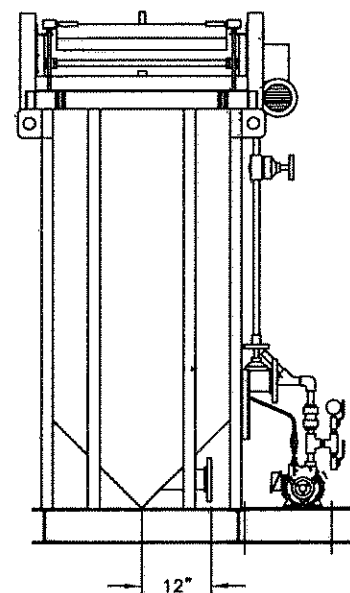
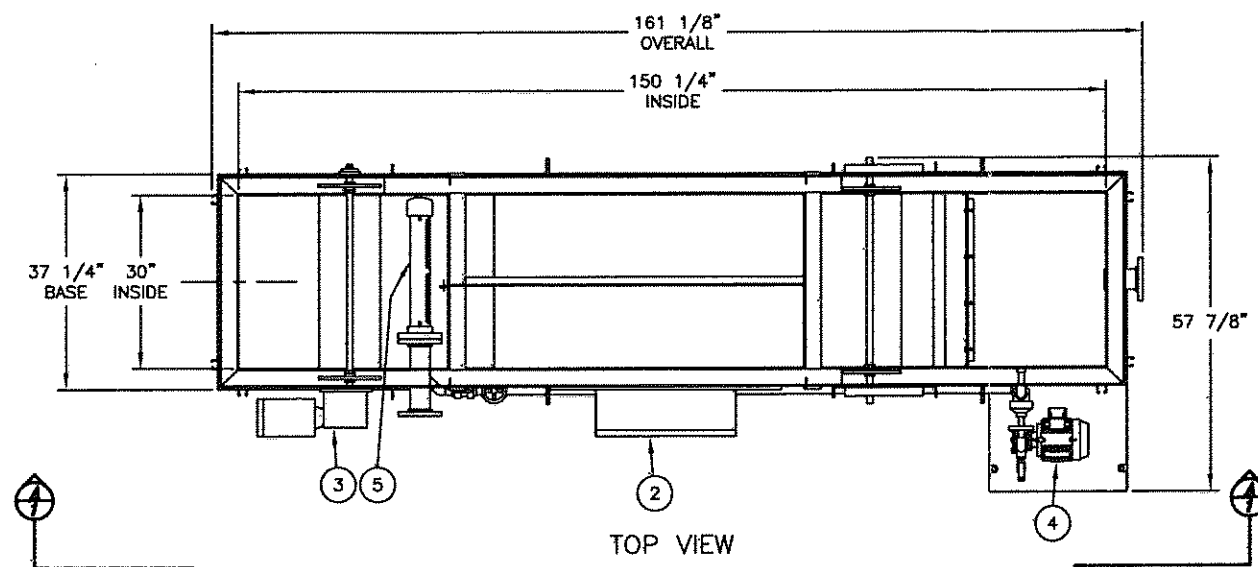
SUPPLY GAS PRESSURE IN W.C.

WORKING GAS PRESSURE IN W.C.

AIR PRESSURE: MIN PSI MAX PSI

U.S. PATENT #

NAMEPLATE, ITEM 7,
DATA DETAIL
FULL SCALE



BILL OF MATERIAL			
ITEM	DESCRIPTION	QTY	PART NO.
1	WELDMENT, DAF-20, 304 SS WITH CARBON STEEL STRUCTURAL	1	304308D00W
2	CONTROL PANEL, 480V/3#/60HZ, NEMA 4	1	
3	SKIMMER ASSEMBLY, 1/3HP, 90VDC TEFC MOTOR, FOR 30" WIDE TANK	1	304308D00B
4	RECYCLE PUMP, 2 HP, 480/3/60, 1" NPT IN, 3/4" NPT OUT, 10 GPM @ 130' TDH, CLOSE COUPLED TO 3,500 RPM TEFC MOTOR, MFG'S STANDARD PAINT	1	2231000092
5	INLET HEADER, 3" PVC	REF	
6	"ELLIS" LOGO-ADHESIVE BACKED LABEL	2	5912000011
7	NAMEPLATE, 304SS, SEE DETAIL	1	600597B01
8	pH CONTROLLER, 3-8750, SHIPPED LOOSE	1	2236001105
9	CHEMICAL PUMPS, SHIPPED LOOSE. CONTRACTOR TO INSTALL AND WIRE EACH PUMP TO DAF PANEL. PUMP MODEL LVG5 IS FOR POLYMER, MODEL LPH6 IS FOR COAGULANT AND PH ADJUSTMENT CHEMISTRY.	3	(2) 5916000258 (1) 2231000076
10	SLUDGE PUMP, AIR OPERATED, 1", 6661A3-322-C, SHIPPED LOOSE	1	5916000400
11	SLUDGE HOLDING TANK, POLYETHYLENE MATERIAL, 300 GALLONS - SHIPPED LOOSE	1	5920000113
12	FEED PUMP, FLOWMAX 5 CENTRIFUGAL, SIZE 1 1/2" X 1 1/2" NPT CONNECTIONS, CAST IRON CONSTRUCTION, 30 GPM @ 55' TDH. PUMP IS CLOSE COUPLED TO A 1 1/2 HP, 480V/3/60 HZ MOTOR. PUMP CAN PASS 0.56" SOLID. PUMP IS SHIPPED LOOSE	2	2231000094
13	FLOW METER, MAG 5000 - SHIPPED LOOSE	1	4500000222
14	ULTRASONIC LEVEL TRANSMITTER WITH PANEL DISPLAY AND FOUR (4) RELAYS, LU80-5101, TRANSMITTER SHIPPED LOOSE, DISPLAY IS MOUNTED IN THE DAF PANEL	1	5921000004 5921000005
15	DATA SIGNAL DATA LOGGER, ES120, SHIPPED LOOSE	1	2236001104

ITEMS WITH * CAN BE FOUND ON BOM WDAF-020X002

NOTES:

1) TANK AND INTERIOR PLATES TO BE FABRICATED OF 304 SS, 10 GA MATERIAL. EXTERNAL STRUCTURAL MEMBERS AND BASE ARE OF A-36 CARBON STEEL MATERIAL. INLET HEADER TO BE PVC SCHEDULE 80 MATERIAL.

2) ALL PIPING INTEGRAL TO TANK WILL BE 304 SS. ALL OTHER PIPING AND VALVES WILL BE PVC SCH 80.

3) FLANGES TO BE FLAT FACE, 150# ANSI, BOLT CIRCLE TO STRADDLE CENTER LINE AND WILL HAVE A 6" PROJECTION FROM OUTSIDE OF TANK UNLESS OTHERWISE NOTED.

4) ANCHOR BOLTS SUPPLIED BY OTHERS, 1/1/4" HOLES PROVIDED.

5) ALL WETTED HARDWARE TO BE STAINLESS STEEL (ANTI-SEIZE TO BE USED). NON-WETTED HARDWARE WILL BE ZINC PLATED STEEL.

6) INFLUENT FLOW RATE IS 28 GPM.

7) ITEMS WITHOUT PART NUMBERS, HARDWARE FOR MOUNTING COMPONENTS, AND PVC PIPING COMPONENTS SMALLER THAN 3" ARE SUPPLIED AND INSTALLED BY ASSEMBLER PRIOR TO SHIPPING.

WEIGHTS (APPROXIMATE):

EMPTY - 5,500 LBS.
OPERATING - 20,000 LBS.

PAINT SPECIFICATIONS:

INTERIOR: NO COATING ON STAINLESS STEEL.

EXTERIOR: NO COATING ON STAINLESS STEEL. STRUCTURAL STEEL PARTS: SURFACES PREPARED TO SSPC-SP6, COMMERCIAL BLAST AND COATED WITH DUPONT CORLAR 825-Y-9031/VF-Y-632 CHROMATE FREE PRIMER, 4 MILS. MIN., FINISH COAT TO BE DUPONT IMRON 326 POLYURETHANE ENAMEL, 2 MILS. MIN., FINISH COLOR TO BE SAFETY BLUE.

FINAL RECORD DRAWING

THIS DRAWING IS SUBMITTED AS FINAL RECORD AND IS AUTHORIZED FOR FABRICATION AND ASSEMBLY. DRAWING REFLECTS TO DATE CHANGES MADE BY CUSTOMER PER LATEST CHANGE ORDER/PURCHASE ORDER.

Project manager: John Sodemann Date: 6-11-13

SHEET 1 OF 1 PART #: 304307D00B

ELLIS CORPORATION
ENGINEERS AND MANUFACTURERS
HELA SPICE DISSOLVED AIR FLOTATION (DAF-20)
GENERAL ARRANGEMENT DRAWING

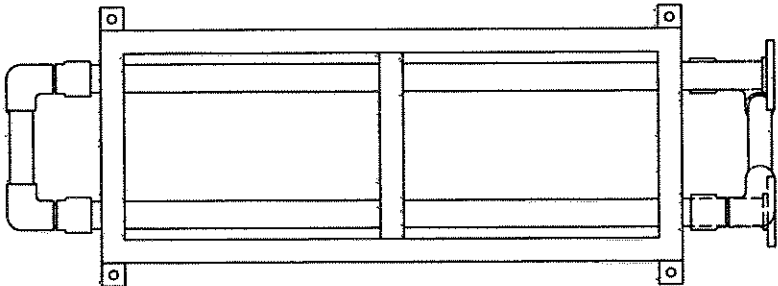
MATERIAL 304 SS SHELL CARBON STEEL STRUCTURAL	REV. LEVEL EDO No. DATE REV.	B 6-29-13					
DRAWN BY: JAS DATE: 4-22-13	CHECKED BY: DATE:	MFG. ENG.: DATE:	APPROVED BY: DATE:	NEXT ASSEMBLY:			
UNLESS OTHERWISE NOTED, THIS DRAWING IS THE PROPERTY OF ELLIS CORP. IT IS TO BE USED ONLY FOR THE PURPOSES SPECIFIED HEREIN. IT IS NOT TO BE REPRODUCED OR TRANSMITTED IN ANY FORM OR BY ANY MEANS, ELECTRONIC OR MECHANICAL, INCLUDING PHOTOCOPYING, RECORDING, OR BY ANY INFORMATION STORAGE AND RETRIEVAL SYSTEM, WITHOUT THE WRITTEN PERMISSION OF ELLIS CORPORATION. THIS DRAWING IS THE PROPERTY OF ELLIS CORPORATION AND IS NOT TO BE LOANED, REPRODUCED, COPIED, OR IN ANY MANNER DISCLOSED TO ANY OTHER PARTY WITHOUT THE WRITTEN PERMISSION OF ELLIS CORPORATION.				SCALE 1/16"	DRAWING NUMBER 30	SERIAL # 4307	INSET D

NOTES:

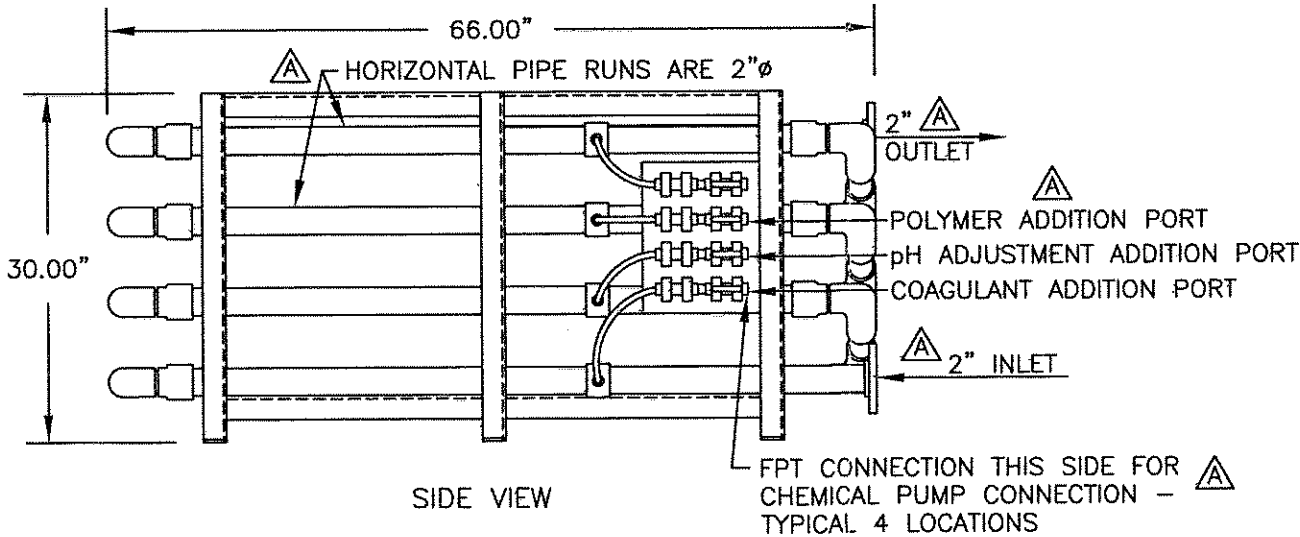
- 1) FLOW RATING 20 GPM MINIMUM, 50 GPM MAXIMUM.
- 2) SUPPORT STAND TO BE FABRICATED OF 2 X 2 X 1/4" ANGLE, 304 STAINLESS STEEL MATERIAL
- 2) ALL PIPING AND FLANGES TO BE PVC SCH. 80. MATERIAL, FLANGES TO BE FLAT FACE 150#
- 3) ANCHOR BOLTS SUPPLIED BY OTHERS, 3/4" HOLES PROVIDED
- 4) ALL HARDWARE TO BE STAINLESS STEEL, ANTI-SEIZE TO BE USED.
- 5) INSTALLATION CONTRACTOR TO INSTALL A DRAIN PORT, WITH BALL VALVE, JUST PRIOR TO THE SMS-20 INLET.

WEIGHTS (APPROXIMATE): 300 LBS.

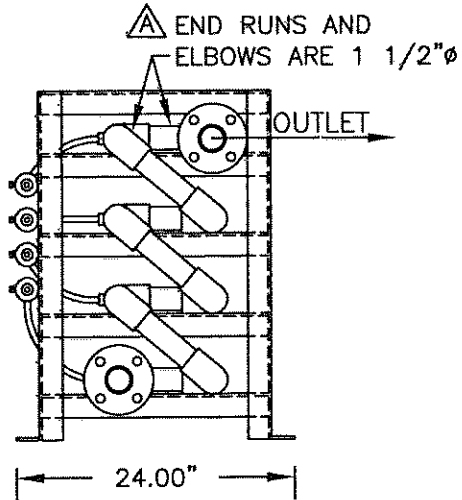
MODEL	MINIMAL FLOW	MAXIMUM FLOW	PIPE SIZE	ELBOW SIZE
SMS-20	20	50	2"	1 1/2"



TOP VIEW



SIDE VIEW




INLET END VIEW

FINAL RECORD DRAWING

THIS DRAWING IS SUBMITTED AS FINAL RECORD AND IS AUTHORIZED FOR FABRICATION AND ASSEMBLY. DRAWING REFLECTS TO DATE CHANGES MADE BY CUSTOMER PER LATEST CHANGE ORDER/PURCHASE ORDER.

Project manager: John Sedemann Date: 6-11-13

		ELLIS CORPORATION	
ENGINEERS AND MANUFACTURERS			
HELA SPICE SERPENTINE MIX SYSTEM			
GENERAL ARRANGEMENT DRAWING			
MATERIAL	REV. LEVEL	DATE	DATE
PVC SCH. 80	EDD No.	4-18-13	
304 SS STAND	DATE REV.		
DRAWN BY:	CHECKED BY:	DATE	DATE
4-22-13			
UNLESS OTHERWISE NOTED		NEXT ASSEMBLY:	
THE WORKMAN IS THE PROPERTY OF ELLIS CORP. IT IS LOANED TO THE CUSTOMER AND IT SHALL NOT BE COPIED OR REPRODUCED IN ANY MANNER, BUT IT SHALL NOT BE USED IN ANY OTHER WAY WITHOUT THE WRITTEN CONSENT OF ELLIS CORP. TO THE WORKMAN OF THIS COMPANY, AND THAT IT SHALL BE RETURNED TO ELLIS CORP.		SCALE	
DOWNSIDE OR TOP SIDE PLACES SHALL BE INDICATED ON THE DRAWING. PLACES SHALL BE INDICATED ON THE DRAWING. PLACES SHALL BE INDICATED ON THE DRAWING. PLACES SHALL BE INDICATED ON THE DRAWING.		DRAWING NUMBER	
NTS		38 5000 D	