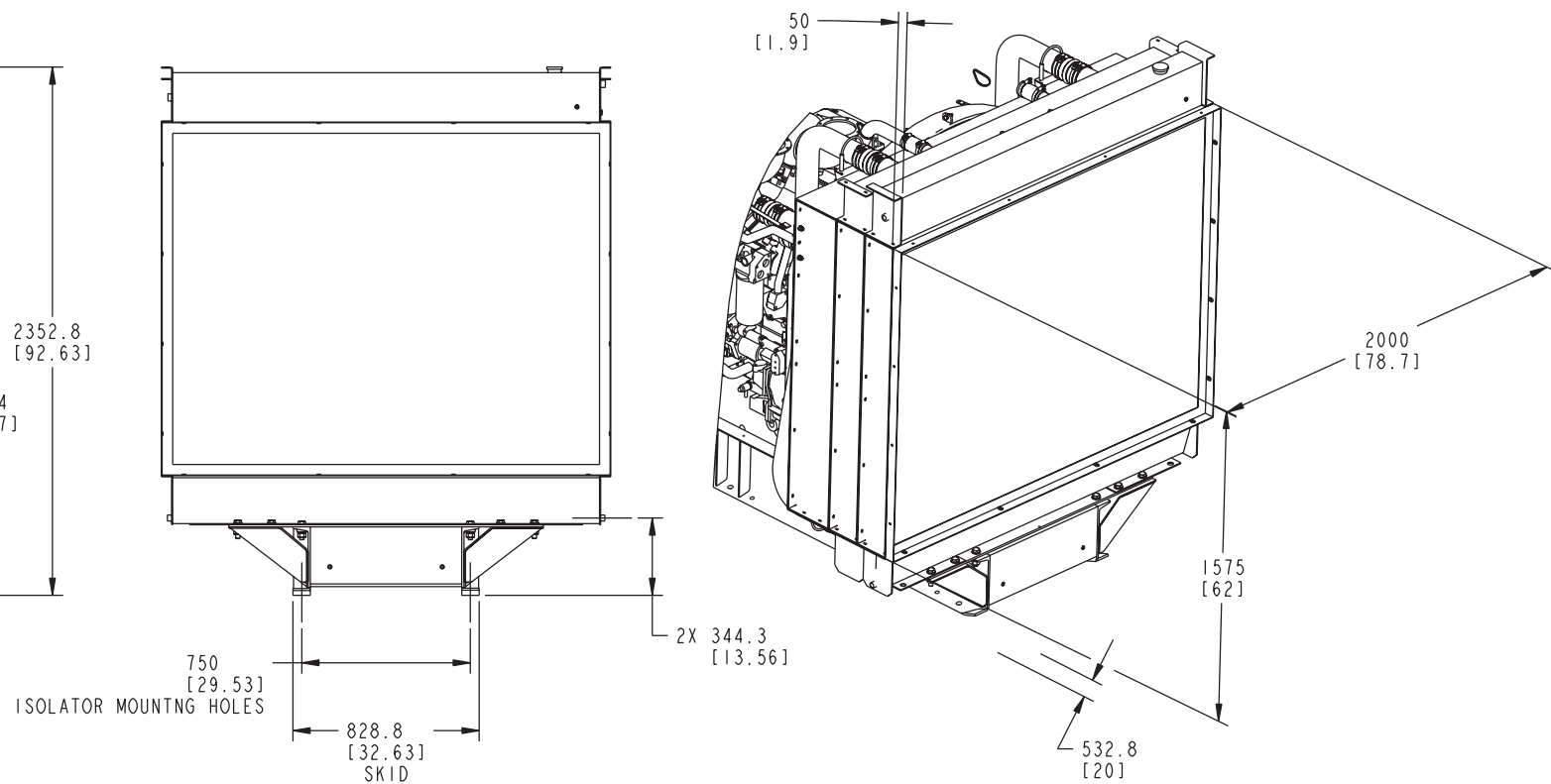
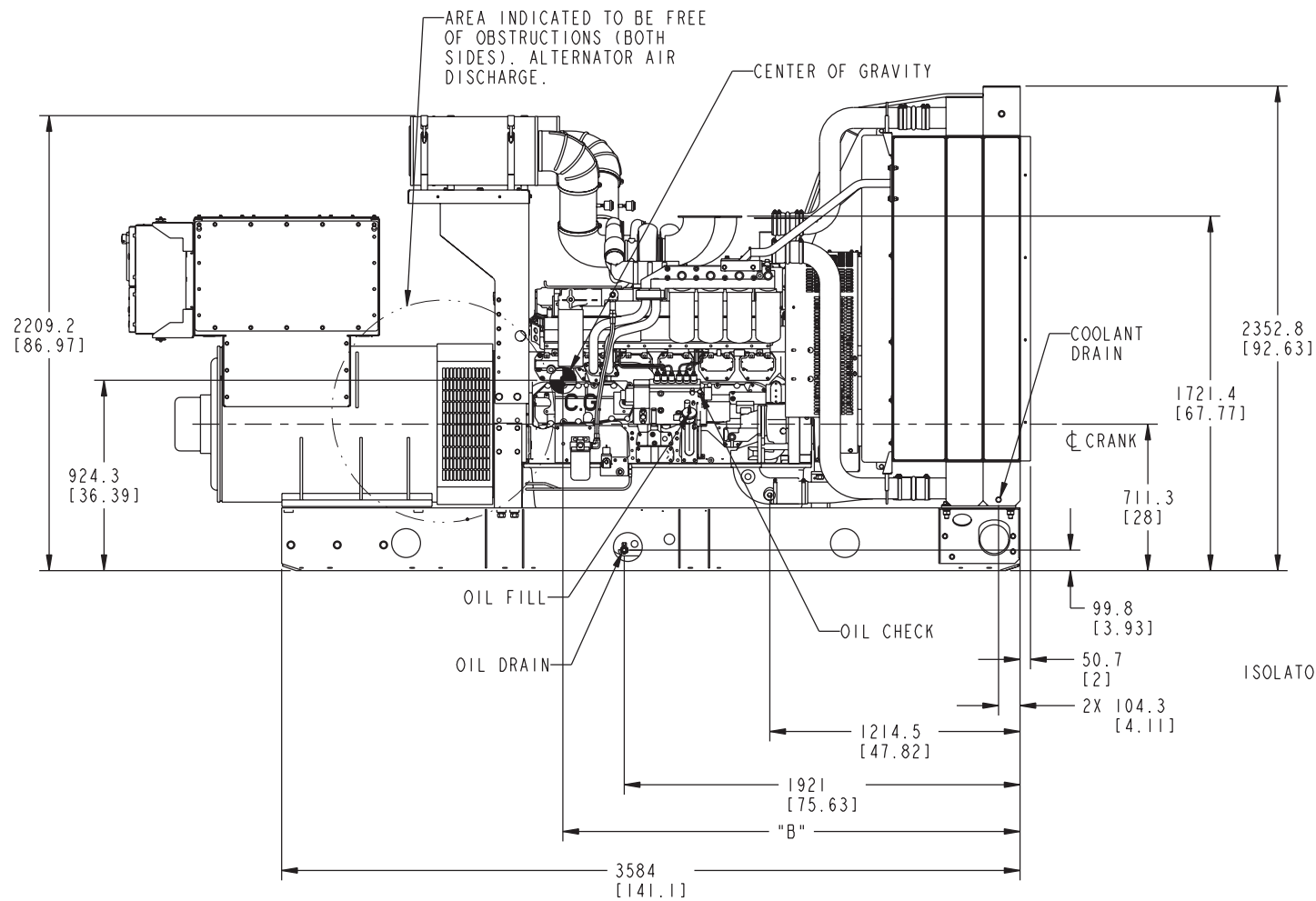
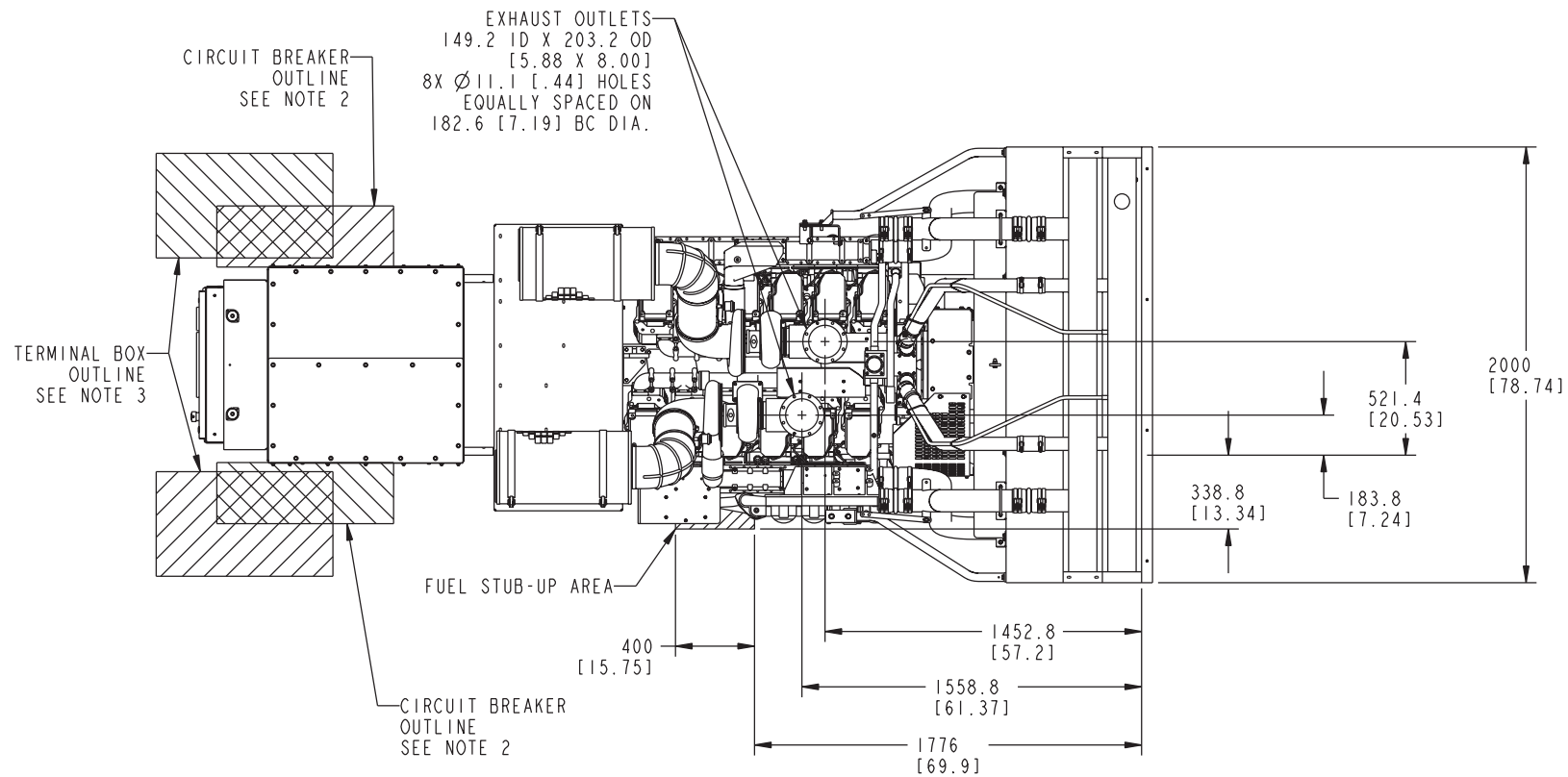




REL NO	LTR	NO	REVISION	DWN	CKD	APVD	DATE
ECO-153776	A	1	PRODUCTION RELEASE	JNR	PWB	P. BAKER	03AUG15



## NOTES:

1. DIMENSIONS SHOWN IN [ ] ARE INCHES.
2. REFER TO CIRCUIT BREAKER OUTLINE DRAWING FOR ELECTRICAL STUB-UP AREA FOR SPECIFIC BREAKERS.
3. FOR TERMINAL BOX APPLICATIONS, SEE APPLICABLE TERMINAL BOX OUTLINE DRAWING.
4. (SEE SHEET 2) 25 [1] DIA HOLES MARKED BY  $\triangle$  FOR 10 POINT ISOLATION MOUNTING.
5. (SEE SHEET 2) FUEL IN HOSE [Ø.75] X 2009 [79.1] LONG WITH 3/4-14 NPTF EXTERNAL THREAD FITTING. FUEL OUT HOSE [Ø.50] X 1270 [50.0] LONG WITH 3/4-14 NPTF EXTERNAL THREAD FITTING.
6. (SEE SHEET 4) TERMINALS WILL ACCOMMODATE STANDARD NEMA AND IEC 2-HOLE LUGS.
7. (SEE SHEET 4) TERMINALS WILL ACCOMMODATE UP TO 10-750 MCM LUGS.
8. (SEE SHEET 4) TERMINALS WILL ACCOMMODATE UP TO 6-350 CMC LUGS OR 4-500 MCM LUGS.
9. ALL DIMENSIONS ARE REFERENCE, UNLESS SPECIFICALLY TOLERANCED.

UNLESS OTHERWISE SPECIFIED, ALL DIMENSIONS ARE IN MILLIMETERS				SIN TO A040V830		DWN J.ROBINSON			CUMMINS POWER GENERATION	
DIM	X ± 1	HOLE	0.00 - 4.99 +.15/-0.08	DO NOT SCALE PRINT		CKD P.BAKER	APVD P.BAKER		OUTLINE, GENSET	
	.X ± 0.8		5.00 - 9.99 +.20/-0.10							
	.XX ± 0.38		10.00 - 17.49 +.25/-0.13							
ANG TOL: ± 1.0°				SCALE: 1:16		CONFIDENTIAL - PROPERTY OF CUMMINS POWER GENERATION GROUP		FOR INTERPRETATION OF DIMENSIONING AND TOLERANCING, SEE ASME Y14.5M-1994		
						FIRST USED ON DOQ AD		PGF		
						SHEET 1 OF 4		REV A		

REL NO	LTR	NO	REVISION	DWN	CKD	APVD	DATE
ECO-153776	A	I	PRODUCTION RELEASE	JNR	PWB	P. BAKER	03AUG15

