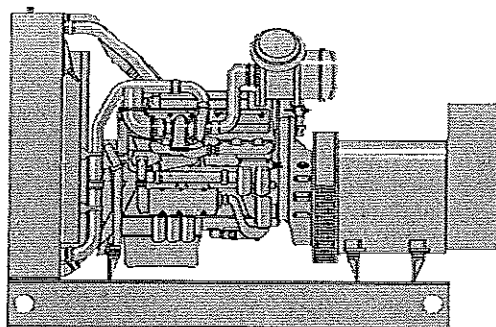




KATOLIGHT® Diesel ENGINE GENERATOR SETS

675 KW
60 Hz
570 KW
50 Hz



Model Selection / Rating Chart

MODEL NO. @ 60 Hz	STANDBY RATINGS & CHARACTERISTICS					
	KW*	RPM	VOLTS	KVA @ .8 P.F.	PHASE	WIRE
D675FRR4	675	1800	277/480	843.75	3	12
D675FPR4	675	1800	120/208	843.75	3	12
D675FJR4	675	1800	120/240	843.75	3	12

MODEL NO. @ 50 Hz	STANDBY RATINGS & CHARACTERISTICS					
	KW*	RPM	VOLTS	KVA @ .8 P.F.	PHASE	WIRE
D570FRR5	570	1500	220/380	712.5	3	12
D570FPR5	570	1500	110/190	712.5	3	12
D570FJR5	570	1500	110/220	712.5	3	12

General Specifications

ENGINE

TYPE: Vee Multi-Cylinder, Turbocharged/Air charged
CYCLE: 4 CYLINDER: 12
H.P.: 961 @ 1800 RPM KW: 717 @ 1800 RPM
835 @ 1500 RPM 623 @ 1500 RPM
BORE: 5.3 in. (13.5 cm.) STROKE: 6 in. (15.2 cm.)
PISTON DISPLACEMENT: 1,593 in.³ (26.1 lit.)
BMEP: 263 psi (1,812 kPa)
ASPIRATING: 2,035 CFM @ 60 Hz (961 lit/sec @ 60 Hz)
1,615 CFM @ 50 Hz (763 lit/sec @ 50 Hz)
FUEL CONSUMPTION: 50 gal/hr (189 lit/hr)

GENERATOR

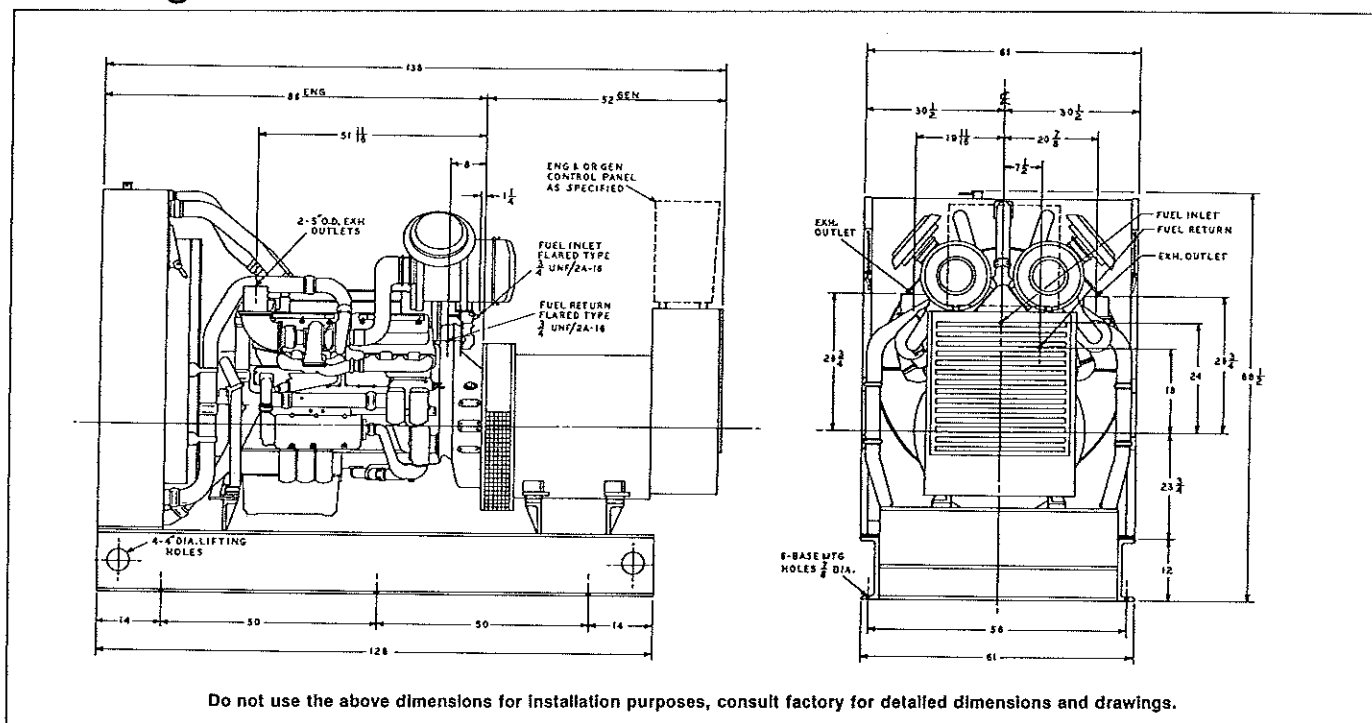
TYPE: Revolving Field-Brushless-Direct Connected Exciter
CONSTRUCTION: Single Regreaseable Bearing-Close Coupled
REGULATION: Static Regulator Maintains 1% of rated voltage
INSULATION: Class F (Epoxy Vacuum Impregnated)
CONNECTION: WYE or DELTA
AMBIENT TEMPERATURE: 40° C.

Installation Facts

DIMENSION & WEIGHT	60 Hz Standby		50 Hz Standby	
Length	158 in.	(401 cm.)	158 in.	(401 cm.)
Width	61 in.	(155 cm.)	61 in.	(155 cm.)
Height	89 in.	(266 cm.)	89 in.	(266 cm.)
Dry Weight	9,737 lb.	(4,416 kg.)	9,737 lb.	(4,416 kg.)
LIQUID CAPACITY (Refill)				
Oil Sump	17 gal.	(64 lit.)	17 gal.	(64 lit.)
Jacket Water, engine only	15 gal.	(57 lit.)	15 gal.	(57 lit.)
Radiator, including eng., jacket water system, & lines-standard cap.	44 gal.	(166 lit.)	44 gal.	(166 lit.)
EXHAUST SYSTEM				
Gas Temperature (stack)	925° F.	(495° C.)	932° F.	(500° C.)
Gas Volume at Stack Temperature	5,210 CFM	(2,460 lit/sec)	4,150 CFM	(1,960 lit/sec)
Maximum allowable back pressure	27 in. H ₂ O	(690 mm. H ₂ O)	27 in. H ₂ O	(690 mm. H ₂ O)
COOLING SYSTEM				
Ambient Capability of Radiator	125° F.	(52° C.)	125° F.	(52° C.)
Maximum allowable static pressure on exhaust side of radiator	0.2 in. H ₂ O	(5 mm. H ₂ O)	0.2 in. H ₂ O	(5 mm. H ₂ O)
Heat rejection to engine jacket water (dry exhaust)	19,960 BTUM	(351 KW)	15,500 BTUM	(273 KW)
Water pump capacity	144 GPM	(9.1 lit/sec)	119 GPM	(7.5 lit/sec)
STARTING SYSTEM				
Electric volt DC	24 volt		24 volt	
Battery recommendation—Minimum temperature 0° F. (– 17.7° C.)	220 Amp-hr.		220 Amp-hr.	
AIR REQUIREMENTS				
Air flow required for Radiator Cooled unit	34,000 CFM	(16,053 lit/sec)	28,000 CFM	(13,220 lit/sec)
Air flow required for Heat Exchanger or Remote Radiator	18,353 CFM	(8,665 lit/sec)	15,292 CFM	(7,220 lit/sec)
Generator set radiated heat	9,910 BTUM	(174 KW)	8,258 BTUM	(145 KW)

* Derate 3% per 1,000 feet (305 m) above 5,000 feet (1,525 m) and 3% per 10°F. (5.5°C.) above 100° F. (38° C.)
Other voltages available up to 6600 volts AC.

Drawings for 675R4



Design & Performance

- Katolight Generator manufactured to meet NEMA-MG-1-22.40 and CSA standards.
- Engine and generator controls are designed and manufactured by Katolight.
- Telephone influence factor is well within NEMA standards.
- Wave form deviation factor is no more than 5%, well within NEMA standards.
- Voltage Regulation — Standard static regulators will keep voltage within 1% of rated voltage.
- Regreasable ball bearings.
- Harmonic Content is 3% maximum.

Standard Equipment

- Basic Engine — 3012TAG
- A.C. Generator
- Fuel Pump
- Primary & Secondary Fuel Filter
- Lube Oil Circulating Pump
- Lube Oil Cooler
- Full Flow Lube Oil Filter
- Jacket Water Circulating Pump
- Thermostat
- Air Filter
- Exhaust Manifold
- 24 Volt Electric Starting Motor, Solenoid, and Switch
- 24 Volt Battery Charging Alternator & D.C. Ammeter
- Oil Pressure—Water Temperature Gauges—Running Time Meter
- Generator Terminal Box
- Governor — Electronic 0 to 3%
- Fabricated Steel Sub-base

Optional Accessories

- Special voltages up to 6600 volts.
- Frequency: 50 - 400 Hz.
- Special array of temperature rise (50°, 60°, 70°, 80°, 105° and 130°C) generators available, meeting NEMA-MG-1-22.84 standards.
- Custom designed control systems — Special metering — Bussing — Switch gear.
- Fuel systems — Pumps — Valves — Tanks — Switches.
- Batteries — Lead acid — Lead calcium — Nickel cadmium.
- Enclosures — Weather resistant — Thermal insulated — Sound attenuated.
- Custom designed trailer mounting.

Materials and Specifications May Change Without Notice.

KATOLIGHT CORPORATION

3201 Third Avenue

P.O. Box 3229

Mankato, Minnesota 56002-3229

Phone: (507) 625-7973

Telex: 29-0787 FAX: (507) 625-2968

Printed in U.S.A.

For more information contact your nearest Representative, Distributor, or Dealer below: